



WITH YOUR LAB IN MIND

## **Laboratory Furniture & Fume Hoods**

Industrial  
Research & Development  
Educational  
Government  
ADA Compliant





## Our Valued Clients

When faced with the challenge of designing a new laboratory or planning a lab renovation, there are many decisions to consider. LOC Scientific strives to support you in that decision making process. Our team of professionals will help you create the laboratory environment that best meets your needs.

It is our privilege to present you with our complete line of furniture including **Metal, Stainless Steel, Wood, Laminate, Phenolic, and Polypropylene**. We offer a wide variety of sizes and configurations to fit virtually any room or application. It is important to LOC that our customers receive the best value and features for their laboratory furniture requirements.

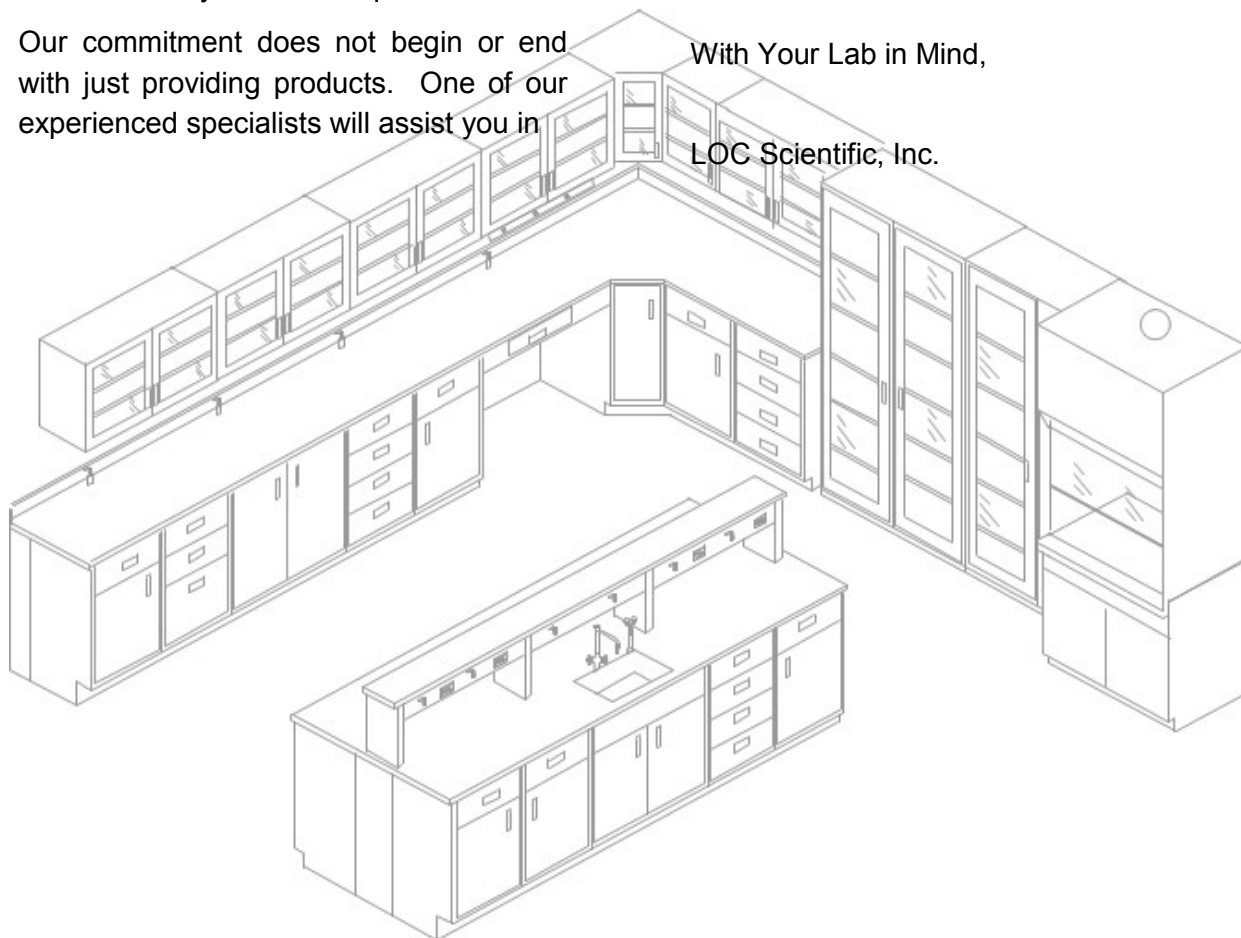
Our commitment does not begin or end with just providing products. One of our experienced specialists will assist you in

making the best product selection for your specific application and then guide you through the planning stage of your project giving careful attention to a design that will enhance productivity. Once your laboratory plans have been determined our project management team will coordinate activities to ensure timely delivery and installation of your new lab.

It is our goal to provide you with a product that is functional, attractively styled and **constructed with confidence**. These features will not only promote productivity, but they will provide you with a laboratory that you can be proud of for years to come.

With Your Lab in Mind,

LOC Scientific, Inc.





# Table Of Contents

---

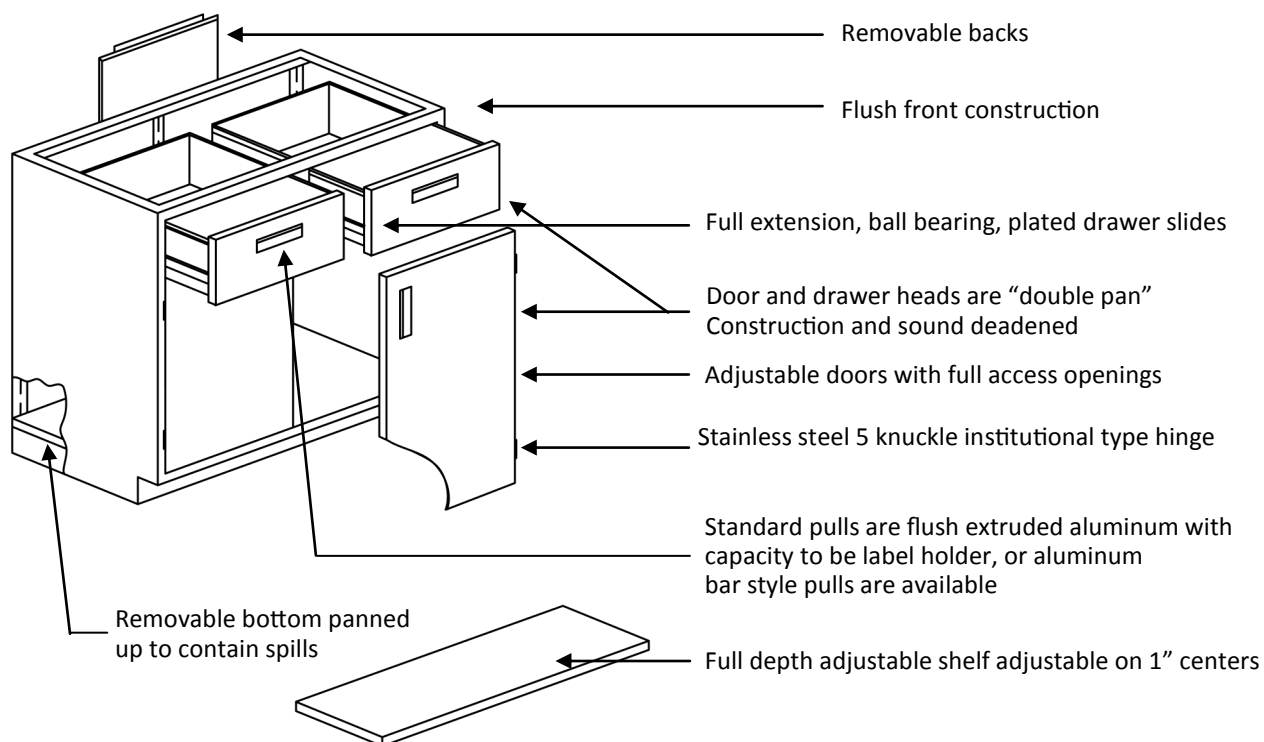
Cabinet Construction .....	5-7
Base Cabinets Standing Height .....	8-11
Base Cabinets Sitting Height .....	12-13
Base Cabinets ADA Height .....	14-15
Acid & Flammable Storage Base Cabinets Sitting/Standing .....	16
Floor Cabinets .....	17
Wall Cabinets .....	18-19
Aprons & Utility Tables .....	20-21
Workstations .....	22-23
Shelving .....	24
Filler Panels/Accessories .....	25-26
Countertops .....	27
Epoxy Sinks/Cupsinks/Drains .....	28-29
Plumbing & Electrical Fixtures .....	30
Fume Hoods & Exhausters .....	31-44
Sash Options & Ceiling Enclosures .....	45
Fume Hood Fixtures & Countertops .....	46-47
Fume Hood Duct & Accessories .....	48
Exhaust Fans .....	49
Service Fixture Rough Ins .....	50
Definitions .....	51

LOC Scientific, Inc.  
 1036 Parkway Ct.  
 Buford, GA 30518

T. 770-932-0202 F. 770-945-0041



# Metal Base Cabinets



## Additional Specifications

All surfaces shall be painted or zinc coated. The paint is a chemical resistant baked on epoxy powder. Specific test data is available upon request.

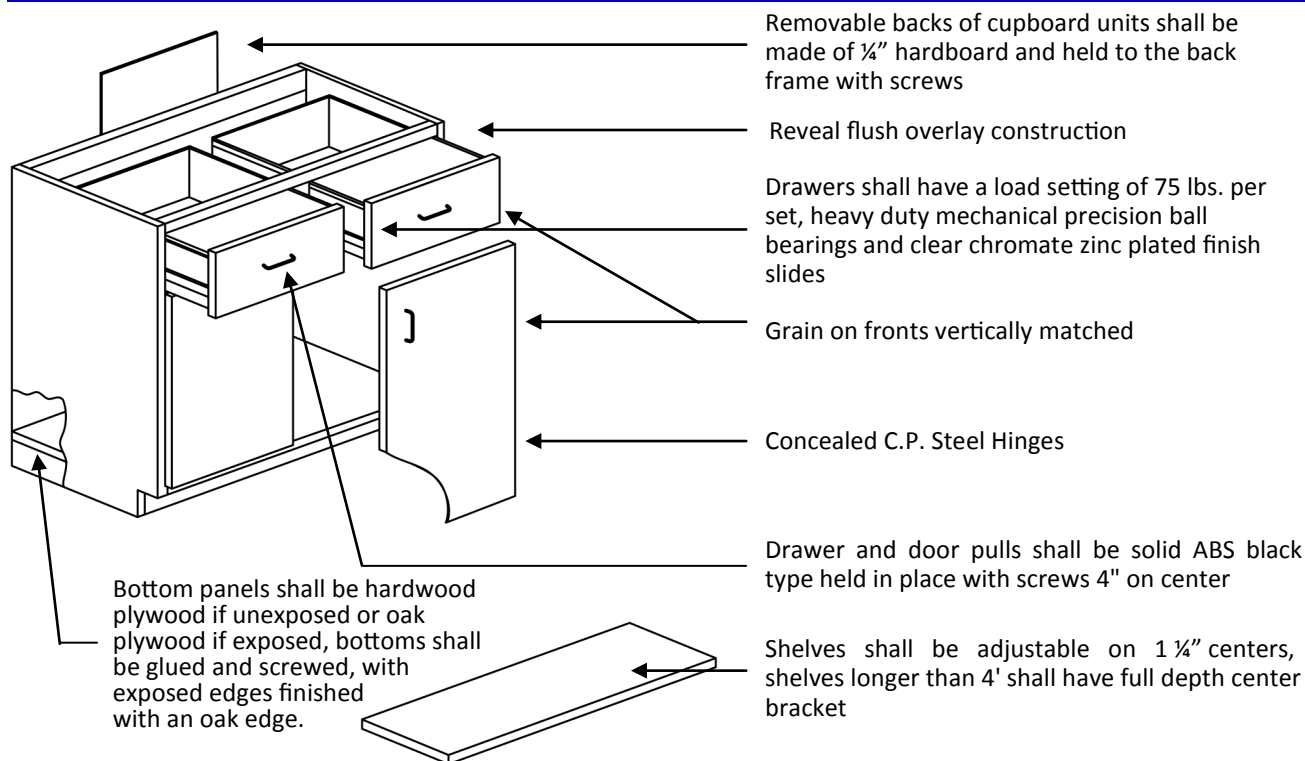
Gauges of base cabinet components are as follows:

Aprons	18 ga	Legs 2" sq. Tube	18 ga
Back Panels	20 ga	Shelves	18 ga
Bottom Panels	18 ga	Side Panels	18 ga
Drawer/Door Outer Panel	20 ga	Table Frames	18 ga
Door Inner Panel	20 ga	Drawer Bodies	20 ga

Available in 14 Colors - Color Chart Available

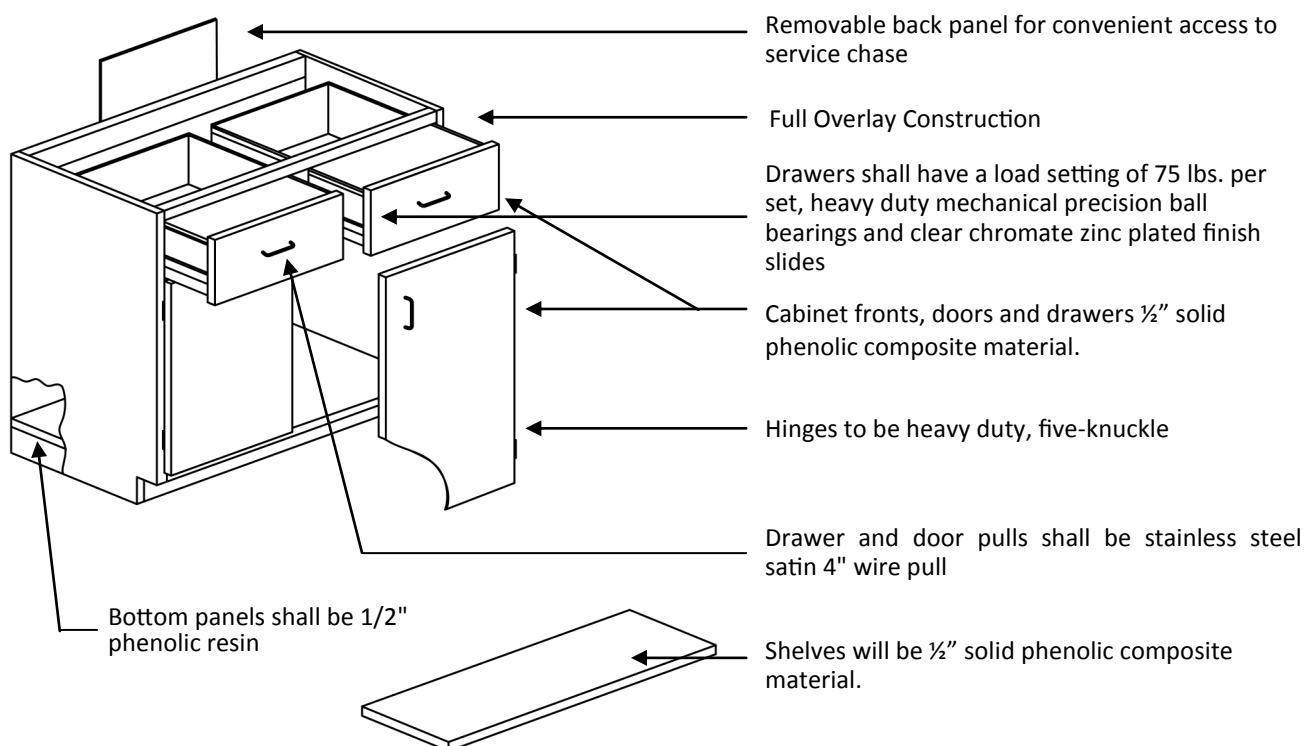
For complete specifications, request our full line of product specifications

## Wood Base Cabinets



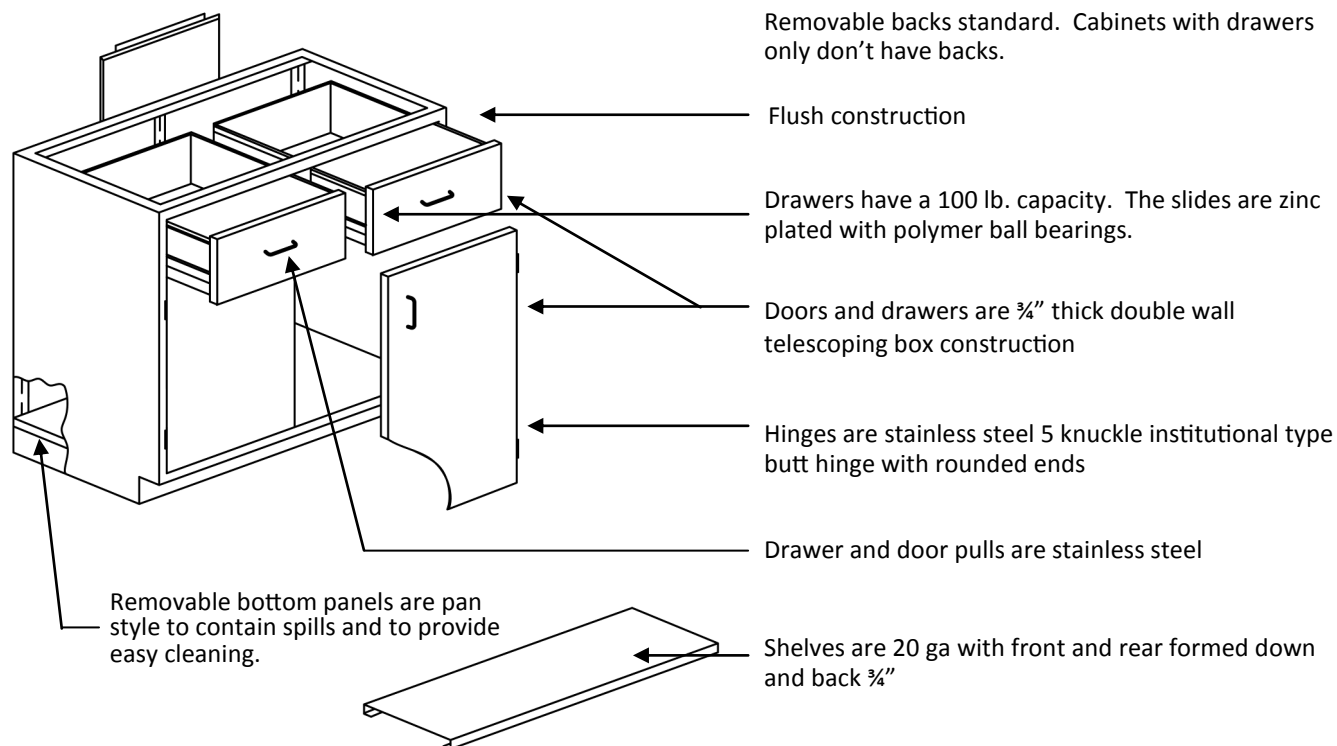
Available in Multiple Chemical Resistant Stain Finishes

## Phenolic Base Cabinets



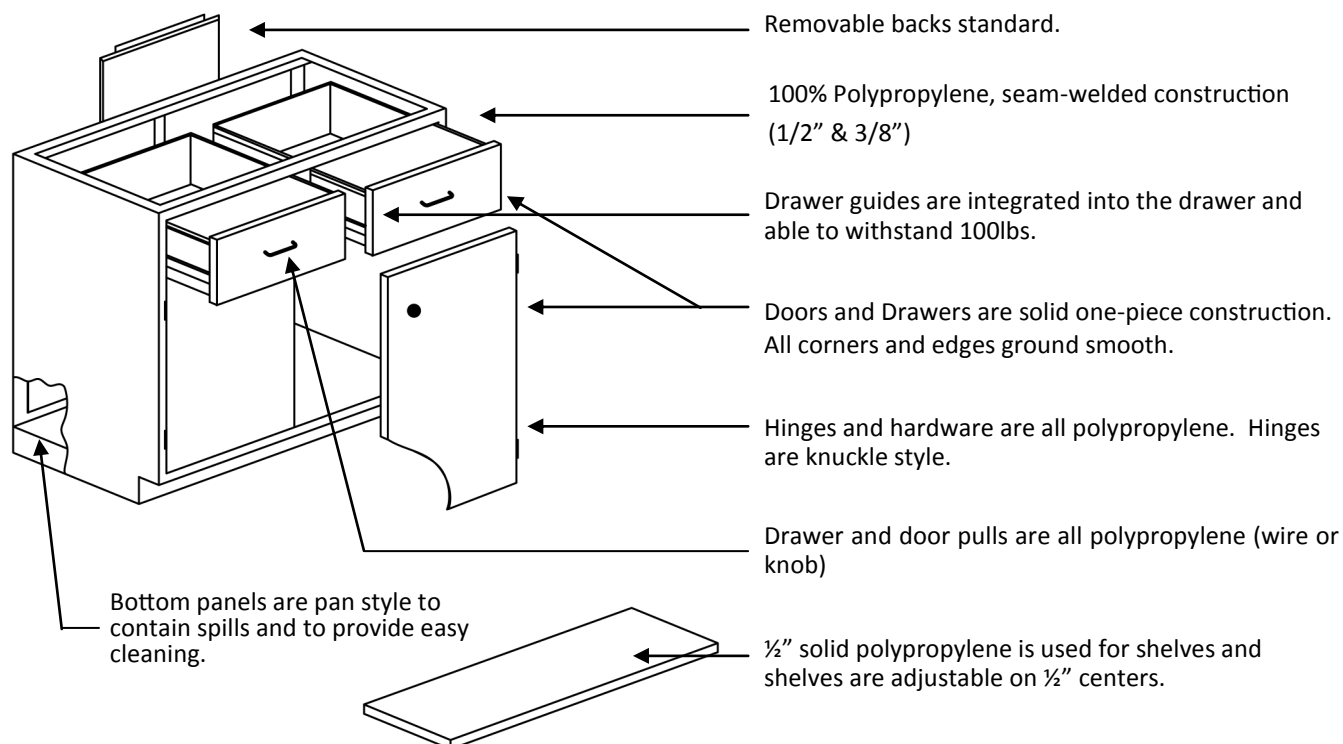
For complete specifications, request our full line of products specifications.

## Stainless Steel Base Cabinets



For complete specifications, request our full line of products specifications.

## Polypropylene Base Cabinets



For complete specifications, request our full line of products specifications.



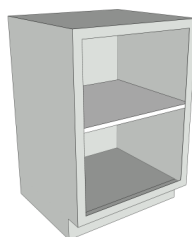
# Standing Height Base Cabinets 15"-24" Wide

Standing Height Cabinets are 35" High x 22" Deep. Units are available in various widths as shown. Drawer units feature full extension slides. A single shelf is standard in the units with doors. Additional shelves are available. Specify left or right hand doors. Hand is indicated by side of door upon which hinge is located.

## Part Numbering System

Sample: B3536-048    1= Base Unit    3= Width    5= # of Drawers    "F"=File Drawer; "S" = Sink Unit; "P"=Panel;  
 12233-456    2= Height    4= # of Doors    6= # of Half Drawers    "R"=Right Hinge; "L"=Left Hinge

**NOTE: These catalog numbers can be used for any cabinet construction material of your choice**



B3515-000  
B3518-000  
B3524-000



B3515-008  
B3518-008  
B3524-008



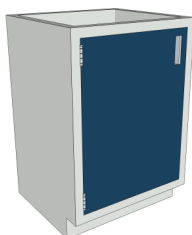
B3515-024  
B3518-024  
B3524-024



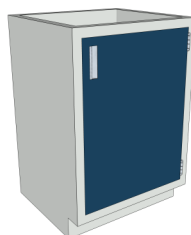
B3515-032  
B3518-032  
B3524-032



B3515-040  
B3518-040  
B3524-040



B3515-100L  
B3518-100L  
B3524-100L



B3515-100R  
B3518-100R  
B3524-100R



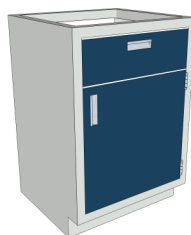
B3515-102L  
B3518-102L  
B3524-102L



B3515-102R  
B3518-102R  
B3524-102R



B3515-110L  
B3518-110L  
B3524-110L



B3515-110R  
B3518-110R  
B3524-110R



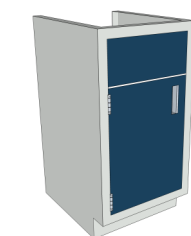
B3515-FFO  
B3518-FFO  
B3524-FFO



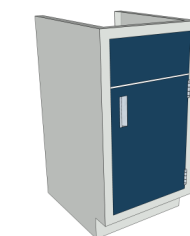
B3515-F12  
B3518-F12  
B3524-F12



B3515-F20  
B3518-F20  
B3524-F20

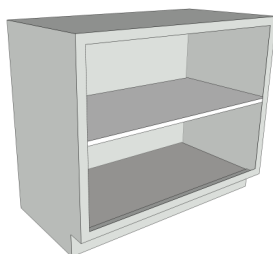


B3515-10SL  
B3518-10SL  
B3524-10SL



B3515-10SR  
B3518-10SR  
B3524-10SR

# Standing Height Base Cabinets 30"-48" Wide



B3530-000  
B3536-000  
B3542-000  
B3548-000



B3530-008  
B3536-008  
B3542-008  
B3548-008



B3530-0016  
B3536-0016  
B3542-0016  
B3548-0016



B3530-024  
B3536-024  
B3542-024  
B3548-024



B3530-032  
B3536-032  
B3542-032  
B3548-032



B3530-040  
B3536-040  
B3542-040  
B3548-040



B3530-044A  
B3536-044A  
B3542-044A  
B3548-044A



B3530-044B  
B3536-044B  
B3542-044B  
B3548-044B



B3530-048A  
B3536-048A  
B3542-048A  
B3548-048A



B3530-048B  
B3536-048B  
B3542-048B  
B3548-048B



B3530-048C  
B3536-048C  
B3542-048C  
B3548-048C



B3530-050  
B3536-050  
B3542-050  
B3548-050



B3530-052  
B3536-052  
B3542-052  
B3548-052



B3530-060  
B3536-060  
B3542-060  
B3548-060



B3530-064  
B3536-064  
B3542-064  
B3548-064



B3530-070A  
B3536-070A  
B3542-070A  
B3548-070A

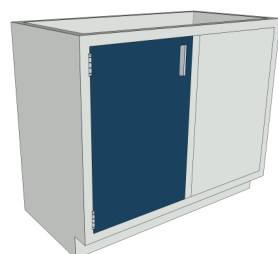


B3530-070B  
B3536-070B  
B3542-070B  
B3548-070B

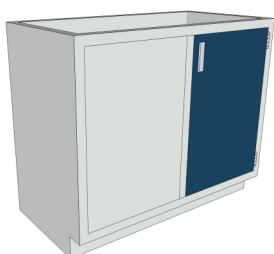


B3530-080  
B3536-080  
B3542-080  
B3548-080

# Standing Height Base Cabinets 30"-48" Wide



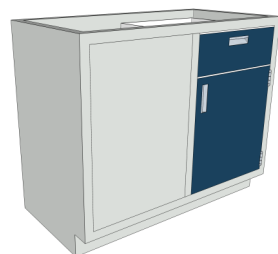
B3530-100LSP  
B3536-100LSP  
B3542-100LSP  
B3548-100LSP



B3530-100RSP  
B3536-100RSP  
B3542-100RSP  
B3548-100RSP



B3530-110LSP  
B3536-110LSP  
B3542-110LSP  
B3548-110LSP



B3530-110RSP  
B3536-110RSP  
B3542-110RSP  
B3548-110RSP



B3530-132L  
B3536-132L  
B3542-132L  
B3548-132L



B3530-132R  
B3536-132R  
B3542-132R  
B3548-132R



B3530-134L  
B3536-134L  
B3542-134L  
B3548-134L



B3530-132R  
B3536-132R  
B3542-132R  
B3548-132R



B3530-140AL  
B3536-140AL  
B3542-140AL  
B3548-140AL



B3530-140AR  
B3536-140AR  
B3542-140AR  
B3548-140AR



B3530-140BL  
B3536-140BL  
B3542-140BL  
B3548-140BL



B3530-140BR  
B3536-140BR  
B3542-140BR  
B3548-140BR



B3530-142L  
B3536-142L  
B3542-142L  
B3548-142L



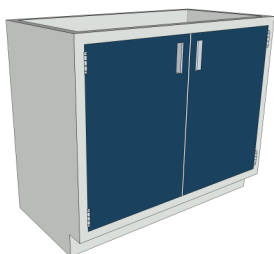
B3530-142R  
B3536-142R  
B3542-142R  
B3548-142R



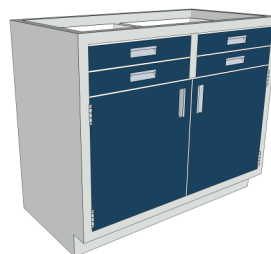
B3530-150L  
B3536-150L  
B3542-150L  
B3548-150L



B3530-150R  
B3536-150R  
B3542-150R  
B3548-150R



B3530-200  
B3536-200  
B3542-200  
B3548-200



B3530-204  
B3536-204  
B3542-204  
B3548-204



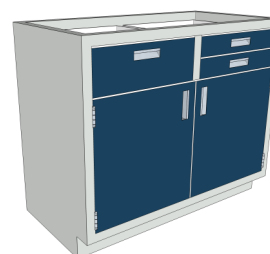
## Standing Height Base Cabinets 30"-48" Wide



B3530-210  
B3536-210  
B3542-210  
B3548-210



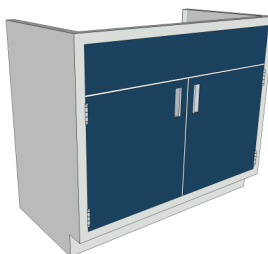
B3530-212A  
B3536-212A  
B3542-212A  
B3548-212A



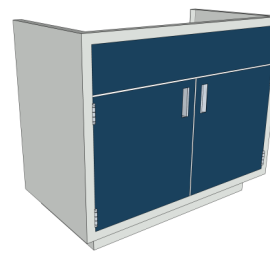
B3530-212B  
B3536-212B  
B3542-212B  
B3548-212B



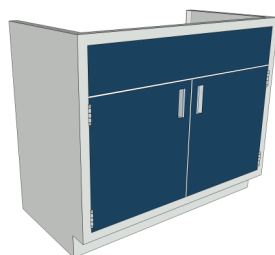
B3530-220  
B3536-220  
B3542-220  
B3548-220



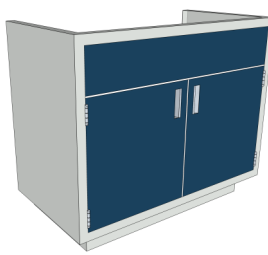
B3530-20S  
B3536-20S  
B3542-20S  
B3548-20S



B3530-20SI  
B3536-20SI  
B3542-20SI  
B3548-20SI



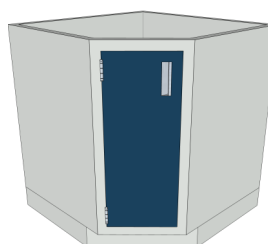
B3530-20P  
B3536-20P  
B3542-20P  
B3548-20P



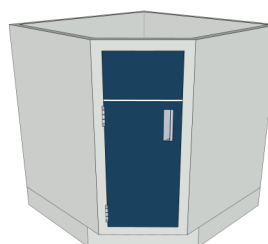
B3530-20PI  
B3536-20PI  
B3542-20PI  
B3548-20PI

## Standing Height Corner Cabinets

**NOTE:** The cabinets listed below are available in both left and right hinge. Please specify your preference.



C3514-100



C3514-10S

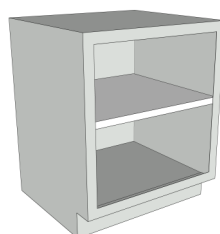
# Sitting Height Base Cabinets 15"-24" Wide

Sitting Height Cabinets are 29" High x 22" Deep. Units are available in various widths as shown. Drawer units feature full extension slides. A single shelf is standard in the units with doors. Additional shelves are available. Specify left or right hand doors. Hand is indicated by side of door upon which hinge is located.

## Part Numbering System

Sample: B2930-044    1= Base Unit    3= Width    5= # of Drawers    "F"=File Drawer; "S" = Sink Unit; "P"=Panel;  
 12233-456    2= Height    4= # of Doors    6= # of Half Drawers    "R"=Right Hinge; "L"=Left Hinge

**NOTE: These catalog numbers can be used for any cabinet construction material of your choice**



B2915-000  
B2924-000  
B2915-000



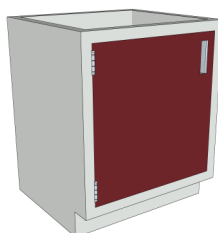
B2915-006  
B2924-006  
B2915-006



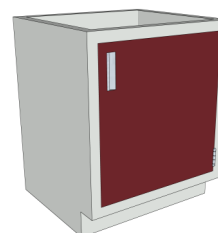
B2915-022  
B2924-022  
B2915-022



B2915-030  
B2924-030  
B2915-030



B2915-100L  
B2924-100L  
B2915-100L



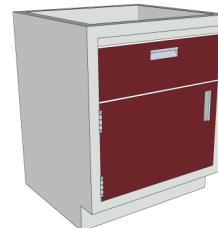
B2915-100R  
B2924-100R  
B2915-100R



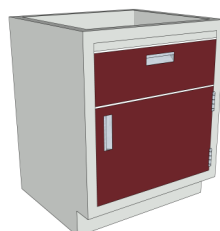
B2915-102L  
B2924-102L  
B2915-102L



B2915-102R  
B2924-102R  
B2915-102R



B2915-110L  
B2924-110L  
B2915-110L



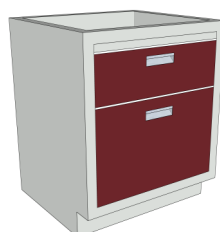
B2915-110R  
B2924-110R  
B2915-110R



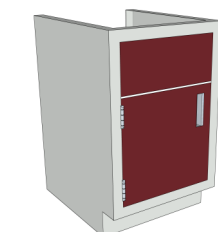
B2915-B11  
B2924-B11  
B2915-B11



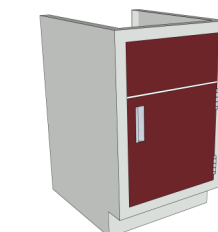
B2915-F02  
B2924-F02  
B2915-F02



B2915-F10  
B2924-F10  
B2915-F10

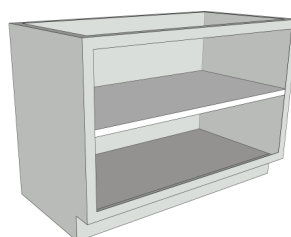


B2915-10SL  
B2924-10SL  
B2915-10SL

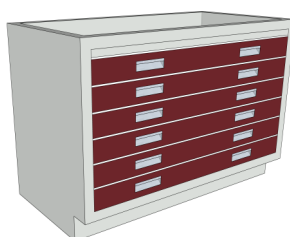


B2915-10SR  
B2924-10SR  
B2915-10SR

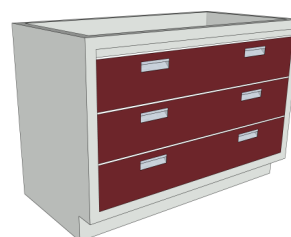
## Sitting Height Base Cabinets 30"-48" Wide



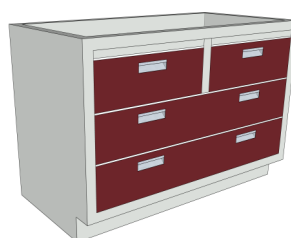
B2930-000  
B2936-000  
B2942-000  
B2948-000



B2930-006  
B2936-006  
B2942-006  
B2948-006



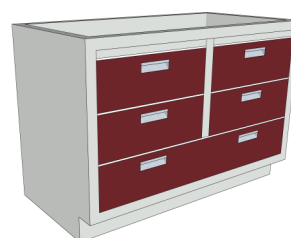
B2930-030  
B2936-030  
B2942-030  
B2948-030



B2930-040  
B2936-040  
B2942-040  
B2948-040



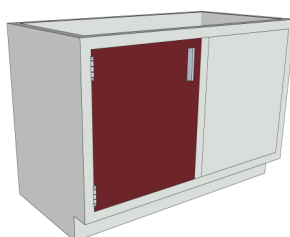
B2930-044  
B2936-044  
B2942-044  
B2948-044



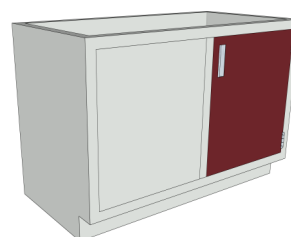
B2930-050  
B2936-050  
B2942-050  
B2948-050



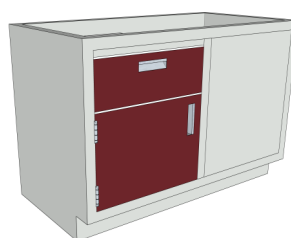
B2930-060  
B2936-060  
B2942-060  
B2948-060



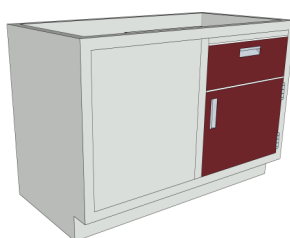
B2930-100LSP  
B2936-100LSP  
B2942-100LSP  
B2948-100LSP



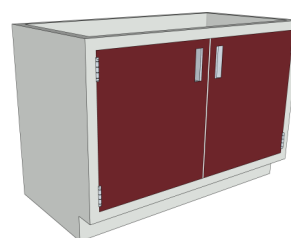
B2930-100RSP  
B2936-100RSP  
B2942-100RSP  
B2948-100RSP



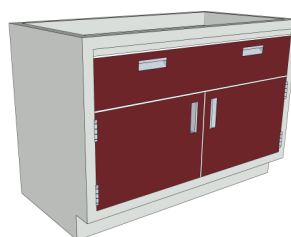
B2930-110LSP  
B2936-110LSP  
B2942-110LSP  
B2948-110LSP



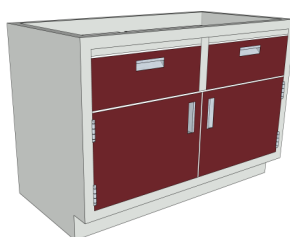
B2930-110RSP  
B2936-110RSP  
B2942-110RSP  
B2948-110RSP



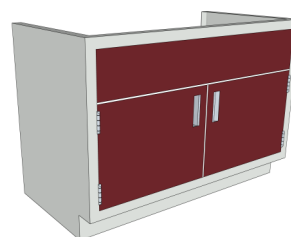
B2930-200  
B2936-200  
B2942-200  
B2948-200



B2930-210  
B2936-210  
B2942-210  
B2948-210



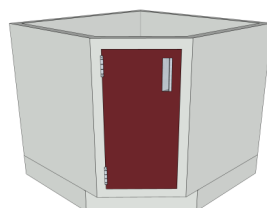
B2930-220  
B2936-220  
B2942-220  
B2948-220



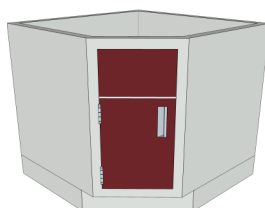
B2930-20S  
B2936-20S  
B2942-20S  
B2948-20S

## Sitting Height Corner Cabinets

**NOTE:** The cabinets listed below are available in both left and right hinge. Please specify your preference.



C2914-100



C2914-10S



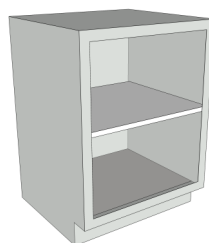
# ADA Height Base Cabinets 15"-24" Wide

ADA Height Cabinets are 32.5" High x 22" Deep. Units are available in various widths as shown. Drawer units feature full extension slides. A single shelf is standard in the units with doors. Additional shelves are available. Specify left or right hand doors. Hand is indicated by side of door upon which hinge is located.

## Part Numbering System

Sample: B3330-031    1= Base Unit    3= Width    5= # of Drawers    "F"=File Drawer; "S" = Sink Unit; "P"=Panel;  
12233-456    2= Height    4= # of Doors    6= # of Half Drawers    "R"=Right Hinge; "L"=Left Hinge

**NOTE: These catalog numbers can be used for any cabinet construction material of your choice**



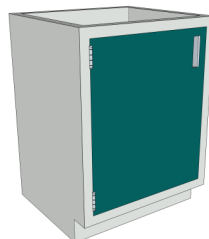
B3315-000  
B3324-000  
B3315-000



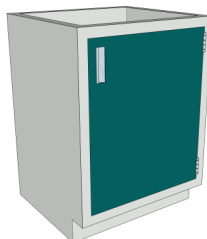
B3315-007  
B3324-007  
B3315-007



B3315-031  
B3324-031  
B3315-031



B3315-100L  
B3324-100L  
B3315-100L



B3315-100R  
B3324-100R  
B3315-100R



B3315-101L  
B3324-101L  
B3315-101L



B3315-101R  
B3324-101R  
B3315-101R



B3315-110L  
B3324-110L  
B3315-110L



B3315-110R  
B3324-110R  
B3315-110R



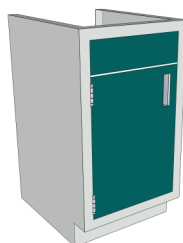
B3315-111L  
B3324-111L  
B3315-111L



B3315-111R  
B3324-111R  
B3315-111R



B3315-F11  
B3324-F11  
B3315-F11

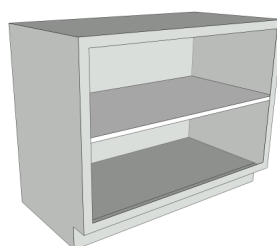


B3315-10SL  
B3324-10SL  
B3315-10SL

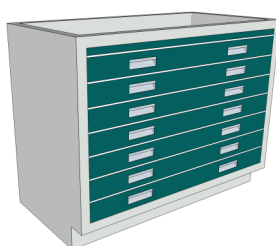


B3315-10SR  
B3324-10SR  
B3315-10SR

# ADA Height Base Cabinets 30"-48" Wide



B3330-000  
B3336-000  
B3342-000  
B3348-000



B3330-007  
B3336-007  
B3342-007  
B3348-007



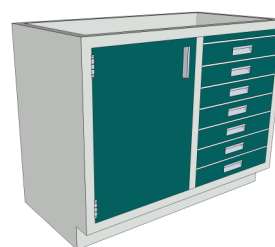
B3330-0014  
B3336-0014  
B3342-0014  
B3348-0014



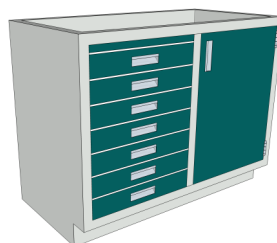
B3330-031  
B3336-031  
B3342-031  
B3348-031



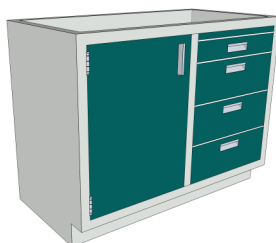
B3330-062  
B3336-062  
B3342-062  
B3348-062



B3330-107L  
B3336-107L  
B3342-107L  
B3348-107L



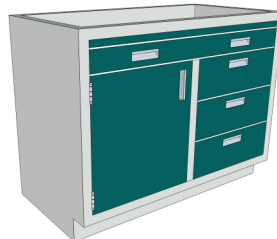
B3330-107R  
B3336-107R  
B3342-107R  
B3348-107R



B3330-131AL  
B3336-131AL  
B3342-131AL  
B3348-131AL



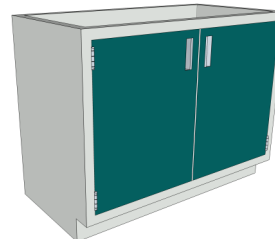
B3330-131AR  
B3336-131AR  
B3342-131AR  
B3348-131AR



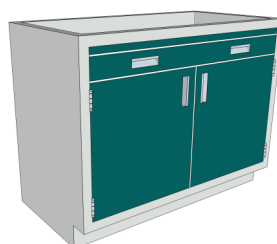
B3330-131BL  
B3336-131BL  
B3342-131BL  
B3348-131BL



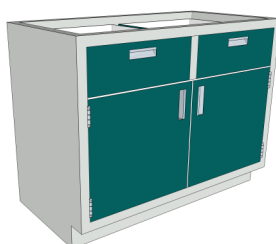
B3330-131BR  
B3336-131BR  
B3342-131BR  
B3348-131BR



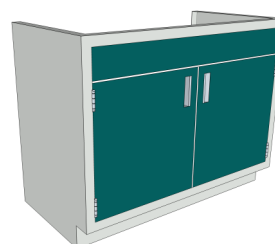
B3330-200  
B3336-200  
B3342-200  
B3348-200



B3330-201  
B3336-201  
B3342-201  
B3348-201



B3330-220  
B3336-220  
B3342-220  
B3348-220



B3330-20S  
B3336-20S  
B3342-20S  
B3348-20S

# Acid/Flammable Storage Cabinets

LOC Scientific is proud to offer a full line of acid and flammable storage cabinets for all your chemical storage needs. All our safety cabinets come in a variety of sizes and options that can be customized to fit your individual preferences. Ensure your workers well-being by providing cabinets to safely store acids and flammables.

## Acid Storage Cabinets

LOC Acid Storage Cabinets are steel reinforced, polyethylene lined to reduce the possibilities of corrosion and include one fully adjustable shelf. Two vent ports are supplied on the back of the cabinet to accept our standard polyolefin vent kit



ASB2915-10P	ASB2942-20P	ASB3515-10P	ASB3542-20P
ASB2918-10P	ASB2948-20P	ASB3518-10P	ASB3548-20P
ASB2924-10P	ASB2952-20P	ASB3524-10P	ASB3552-20P
ASB2930-20P	ASB2958-20P	ASB3530-20P	ASB3558-20P
ASB2936-20P		ASB3536-20P	

Add Suffix "VK" if Vent Kit is Required

## Flammable Storage Cabinets

All LOC Flammable Liquid Storage cabinets are 18 ga powder coated double wall construction for heat resistance up to 2400 degrees. Interior features one fully adjustable shelf with a 2" deep removable spill pan. Doors feature a continuous hinge with a lever type handle and a hidden 3- point lock mechanism. Self closing doors are also available as an option.\* Two vent ports are supplied on the back of the cabinet with 2" barrel plugs. Cabinets are constructed in accordance with OSHA, NFPA 30 and are UL listed.



FSB2915-100	FSB2942-200	FSB3515-100	FSB3542-200
FSB2918-100	FSB2948-200	FSB3518-100	FSB3548-200
FSB2924-100	FSB2952-200	FSB3524-100	FSB3552-200
FSB2930-200	FSB2958-200	FSB3530-200	FSB3558-200
FSB2936-200		FSB3536-200	



\* A full line of safety and storage cabinets available for your specific needs

# Floor Cabinets

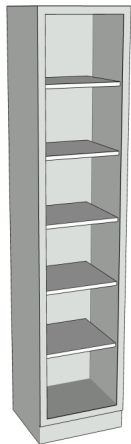
Floor cases are available in widths ranging from 18" to 48". All units are 84" high and are available in either 16" or 21-1/4" depths. Five shelves are standard equipment. Additional shelves are available. On single hinge door units, specify (R) or (L) hinge.

## Part Numbering System

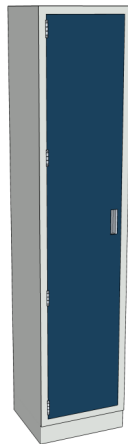
Sample: F8418-2SS16 1= Floor Case 3= Width 5= Material of Doors 7= Depth  
12233-4567 2= Height 4= # Doors 6= Type of Doors

\*Steel, Glass or no Doors (Open)  
\*Hinged, Sliding or Sliding/Framed  
\*"R"=Right Hinge  
\*"L"=Left Hinge

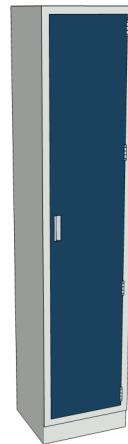
**NOTE: These catalog numbers can be used for any cabinet construction material of your choice**



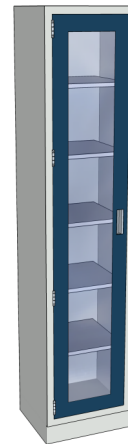
F8418-00016  
F8418-00021  
F8424-00016  
F8424-00021



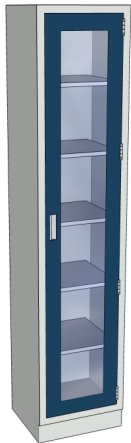
F8418-1SHL16  
F8418-1SHL21  
F8424-1SHL16  
F8424-1SHL21



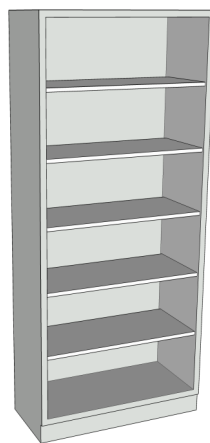
F8418-1SHR16  
F8418-1SHR21  
F8424-1SHR16  
F8424-1SHR21



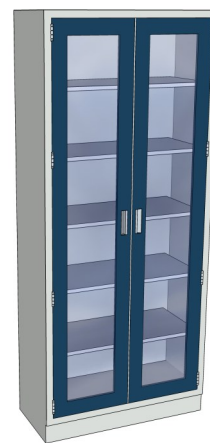
F8418-1GHL16  
F8418-1GHL21  
F8424-1GHL16  
F8424-1GHL21



F8418-1GHR16  
F8418-1GHR21  
F8424-1GHR16  
F8424-1GHR21



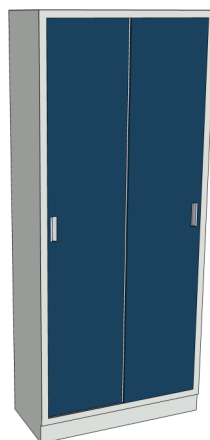
F8430-00016  
F8430-00021  
F8436-00016  
F8436-00021  
F8442-00016  
F8442-00021  
F8448-00016  
F8448-00021



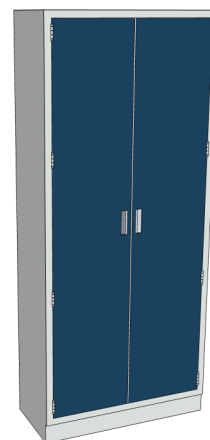
F8430-2GH16  
F8430-2GH21  
F8436-2GH16  
F8436-2GH21  
F8442-2GH16  
F8442-2GH21  
F8448-2GH16  
F8448-2GH21



F8430-2GSF16  
F8430-2GSF21  
F8436-2GSF16  
F8436-2GSF21  
F8442-2GSF16  
F8442-2GSF21  
F8448-2GSF16  
F8448-2GSF21



F8430-2SS16  
F8430-2SS21  
F8436-2SS16  
F8436-2SS21  
F8442-2SS16  
F8442-2SS21  
F8448-2SS16  
F8448-2SS21



F8430-2SH16  
F8430-2SH21  
F8436-2SH16  
F8436-2SH21  
F8442-2SH16  
F8442-2SH21  
F8448-2SH16  
F8448-2SH21

# Wall Cabinets

Wall cases are available in sizes ranging from 24". 31", 36", 42" and 48" high and 18" to 48" wide. All units are 13" deep as standard. 24" high units have one shelf. 31" to 36" high units have two shelves. 48" high units have three shelves. Additional shelves are available. On single hinge door units, specify (R) or (L) hinge.

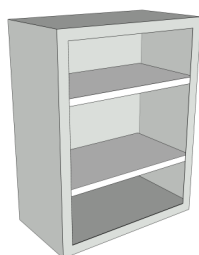
## Part Numbering System

Sample: W3036-2GS 1= Wall Case 3= Width 5= Material of Doors 7= Depth  
 12233-4567 2= Height 4= Doors 6= Type of Doors

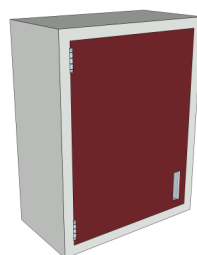
Note: 16" deep cabinets available indicate by final suffix of 16 (Example: W2418-00016)

- \*Steel, Glass or no Doors (Open)
- \*Hinged, Sliding or Sliding/Framed
- \*"R"=Right Hinge
- \*"L"=Left Hinge

**NOTE: These catalog numbers can be used for any cabinet construction material of your choice**



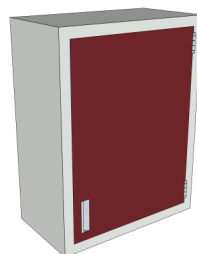
W2418-000	W3624-000
W2424-000	W4218-000
W3018-000	W4224-000
W3024-000	W4818-000
W3618-000	W4824-000



W2418-1SHL	W3624-1SHL
W2424-1SHL	W4218-1SHL
W3018-1SHL	W4224-1SHL
W3024-1SHL	W4818-1SHL
W3618-1SHL	W4824-1SHL



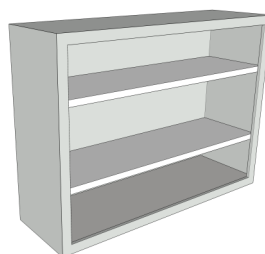
W2418-1SHR	W3624-1SHR
W2424-1SHR	W4218-1SHR
W3018-1SHR	W4224-1SHR
W3024-1SHR	W4818-1SHR
W3618-1SHR	W4824-1SHR



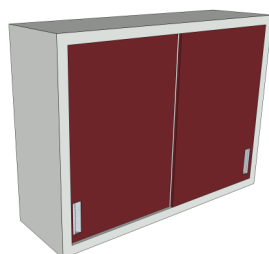
W2418-1GHL	W3624-1GHL
W2424-1GHL	W4218-1GHL
W3018-1GHL	W4224-1GHL
W3024-1GHL	W4818-1GHL
W3618-1GHL	W4824-1GHL



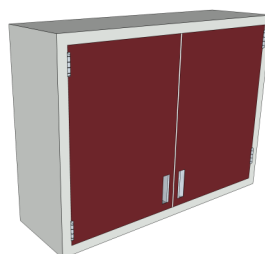
W2418-1GHR	W3624-1GHR
W2424-1GHR	W4218-1GHR
W3018-1GHR	W4224-1GHR
W3024-1GHR	W4818-1GHR
W3618-1GHR	W4824-1GHR



W2430-000	W3642-000
W2436-000	W3648-000
W2442-000	W4230-000
W2448-000	W4236-000
W3030-000	W4242-000
W3036-000	W4248-000
W3042-000	W4830-000
W3048-000	W4836-000
W3630-000	W4842-000
W3636-000	W4848-000



W2430-2SS	W3642-2SS
W2436-2SS	W3648-2SS
W2442-2SS	W4230-2SS
W2448-2SS	W4236-2SS
W3030-2SS	W4242-2SS
W3036-2SS	W4248-2SS
W3042-2SS	W4830-2SS
W3048-2SS	W4836-2SS
W3630-2SS	W4842-2SS
W3636-2SS	W4848-2SS



W2430-2SH	W3642-2SH
W2436-2SH	W3648-2SH
W2442-2SH	W4230-2SH
W2448-2SH	W4236-2SH
W3030-2SH	W4242-2SH
W3036-2SH	W4248-2SH
W3042-2SH	W4830-2SH
W3048-2SH	W4836-2SH
W3630-2SH	W4842-2SH
W3636-2SH	W4848-2SH



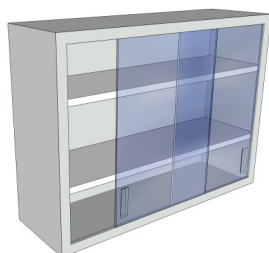
## Wall Cabinets



W2430-2GH	W3642-2GH
W2436-2GH	W3648-2GH
W2442-2GH	W4230-2GH
W2448-2GH	W4236-2GH
W3030-2GH	W4242-2GH
W3036-2GH	W4248-2GH
W3042-2GH	W4830-2GH
W3048-2GH	W4836-2GH
W3630-2GH	W4842-2GH
W3636-2GH	W4848-2GH

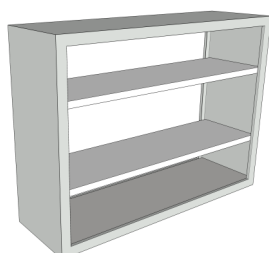


W2430-2GSF	W3642-2GSF
W2436-2GSF	W3648-2GSF
W2442-2GSF	W4230-2GSF
W2448-2GSF	W4236-2GSF
W3030-2GSF	W4242-2GSF
W3036-2GSF	W4248-2GSF
W3042-2GSF	W4830-2GSF
W3048-2GSF	W4836-2GSF
W3630-2GSF	W4842-2GSF
W3636-2GSF	W4848-2GSF

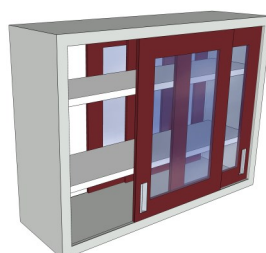


W2430-2GS	W3642-2GS
W2436-2GS	W3648-2GS
W2442-2GS	W4230-2GS
W2448-2GS	W4236-2GS
W3030-2GS	W4242-2GS
W3036-2GS	W4248-2GS
W3042-2GS	W4830-2GS
W3048-2GS	W4836-2GS
W3630-2GS	W4842-2GS
W3636-2GS	W4848-2GS

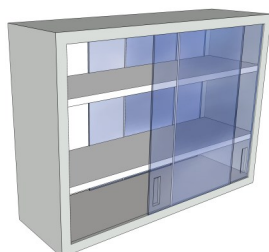
## Pass Thru Cabinets



WDS3030-00013 open-2-s  
WDS3036-00013 open-2-s  
WDS3048-00013 open-2-s



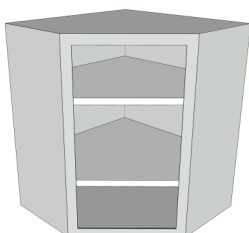
WDS3030-4GSF13 open-2-s  
WDS3036-4GSF13 open-2-s  
WDS3048-4GSF13 open-2-s



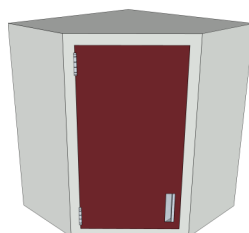
WDS3030-4GS13 open-2-s  
WDS3036-4GS13 open-2-s  
WDS3048-4GS13 open-2-s

## Corner Wall Cabinets

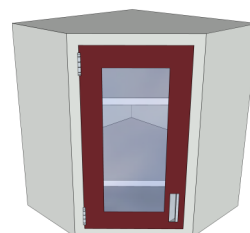
**NOTE: The cabinets listed below are available in both left and right hinge. Please specify your preference.**



WC3018-000  
WC3618-000  
WC4218-000  
WC4818-000



WC3018-1SH  
WC3618-1SH  
WC4218-1SH  
WC4818-1SH



WC3018-1GH  
WC3618-1GH  
WC4218-1GH  
WC4818-1GH

# Apron & Drawer Housings

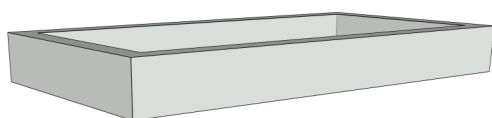
Aprons are available in widths ranging from 24" to 72". All units are 4.5" high and are available in either 22" or 28" depths. Drawer units feature full extension slides.

## Part Numbering System

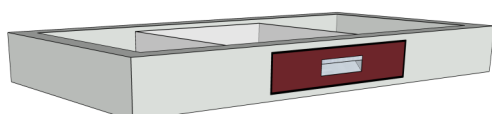
Sample: A046022-000 1= Apron  
1223344-555 2= Height

3= Width 5= # Drawers  
4= Depth

**Note: Apron Heights are 4.5" High**

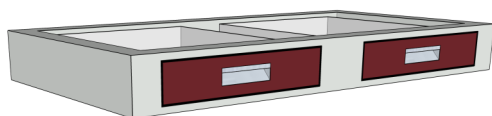


A042422-000	A045422-000	A042428-000	A045428-000
A043022-000	A046022-000	A043028-000	A046028-000
A043622-000	A046622-000	A043628-000	A046628-000
A044222-000	A047222-000	A044228-000	A047228-000
A044822-000		A044828-000	

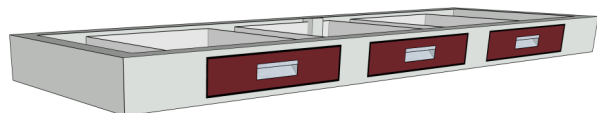


A042422-001	A042428-001
A043022-001	A043028-001
A043622-001	A043628-001
A044222-001	A044228-001

## Wide Drawers Available

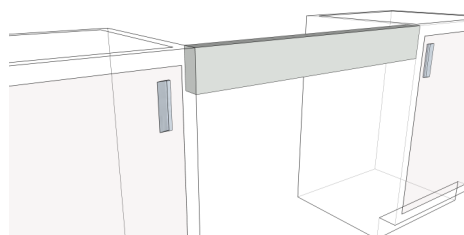


A044222-002	A046622-002	A042428-002	A046628-002
A044822-002	A047222-002	A043028-002	A047228-002
A045422-002		A043628-002	
A046022-002		A044228-002	



A047222-003	A047228-003
-------------	-------------

# Knee Space Rails



KSR0418	KSR0454
KSR0424	KSR0460
KSR0430	KSR0466
KSR0436	KSR0472
KSR0442	KSR0484
KSR0448	KSR0496

# Utility Tables

Utility Tables are available in widths ranging from 24" to 72". All units are available in 29" and 35" high and in either 22" or 28" depths. Drawer units feature full extension slides.



## 29" HIGH TABLES

<u>22" Deep</u>	<u>28" Deep</u>
UT292422-000	UT292428-000
UT293022-000	UT293028-000
UT293622-000	UT293628-000
UT294222-000	UT294228-000
UT294822-000	UT294828-000
UT295422-000	UT295428-000
UT296022-000	UT296028-000
UT296622-000	UT296628-000
UT297222-000	UT297228-000

## 35" HIGH TABLES

<u>22" Deep</u>	<u>28" Deep</u>
UT352422-000	UT352428-000
UT353022-000	UT353028-000
UT353622-000	UT353628-000
UT354222-000	UT354228-000
UT354822-000	UT354828-000
UT355422-000	UT355428-000
UT356022-000	UT356028-000
UT356622-000	UT356628-000
UT357222-000	UT357228-000



## 29" HIGH TABLES

<u>22" Deep</u>	<u>28" Deep</u>
UT292422-001	UT292428-001
UT293022-001	UT293028-001
UT293622-001	UT293628-001
UT294222-001	UT294228-001

## 35" HIGH TABLES

<u>22" Deep</u>	<u>28" Deep</u>
UT352422-001	UT352428-001
UT353022-001	UT353028-001
UT353622-001	UT353628-001
UT354222-001	UT354228-001

Wide Drawers Available



## 29" HIGH TABLES

<u>22" Deep</u>	<u>28" Deep</u>
UT294822-002	UT294828-002
UT295422-002	UT295428-002
UT296022-002	UT296028-002
UT296622-002	UT296628-002
UT297222-002	UT297228-002

## 35" HIGH TABLES

<u>22" Deep</u>	<u>28" Deep</u>
UT354822-002	UT354828-002
UT355422-002	UT355428-002
UT356022-002	UT356028-002
UT356622-002	UT356628-002
UT357222-002	UT357228-002



## 29" HIGH TABLES

<u>22" Deep</u>	<u>28" Deep</u>
UT297222-003	UT297228-003

## 35" HIGH TABLES

<u>22" Deep</u>	<u>28" Deep</u>
UT357222-003	UT357228-003

NOTE: Locking castors available for all units

# Laboratory Workstation

LOC offers the widest variety of workstations and accessories in the market. All our workstations offer the stability and durability for tough jobs yet incorporate the esthetics and the ergonomic features often missing in the workplace. Quality and a more pleasant environment all at an affordable price. Choose from a wide variety of modular accessories. All three models are free standing for future reconfiguration.



## The "HD Model"

Quality Ergonomics  
Height 30" and 35"

<u>Stock No.</u>	<u>Top Dimensions</u>	<u>Wt. (lbs.)</u>
HD4830	48" w. x 30" dp.	100
HD6030	60" w. x 30" dp.	115
HD7230	72" w. x 30" dp.	130



## The "CHD Model"

Cantilever Workbench  
Height 30"-36"

<u>Stock No.</u>	<u>Top Dimensions</u>	<u>Wt. (lbs.)</u>
CHD4830	48" w. x 30" dp.	117
CHD6030	60" w. x 30" dp.	138
CHD7230	72" w. x 30" dp.	158



## The "Ergoline"

Hand Crank Height  
Adjustment 30"-42"

<u>Stock No.</u>	<u>Top Dimensions</u>	<u>Wt. (lbs.)</u>
EL4830	48" w. x 30" dp.	125
EL6030	60" w. x 30" dp.	140
EL7230	72" w. x 30" dp.	155



## The "Millennium"

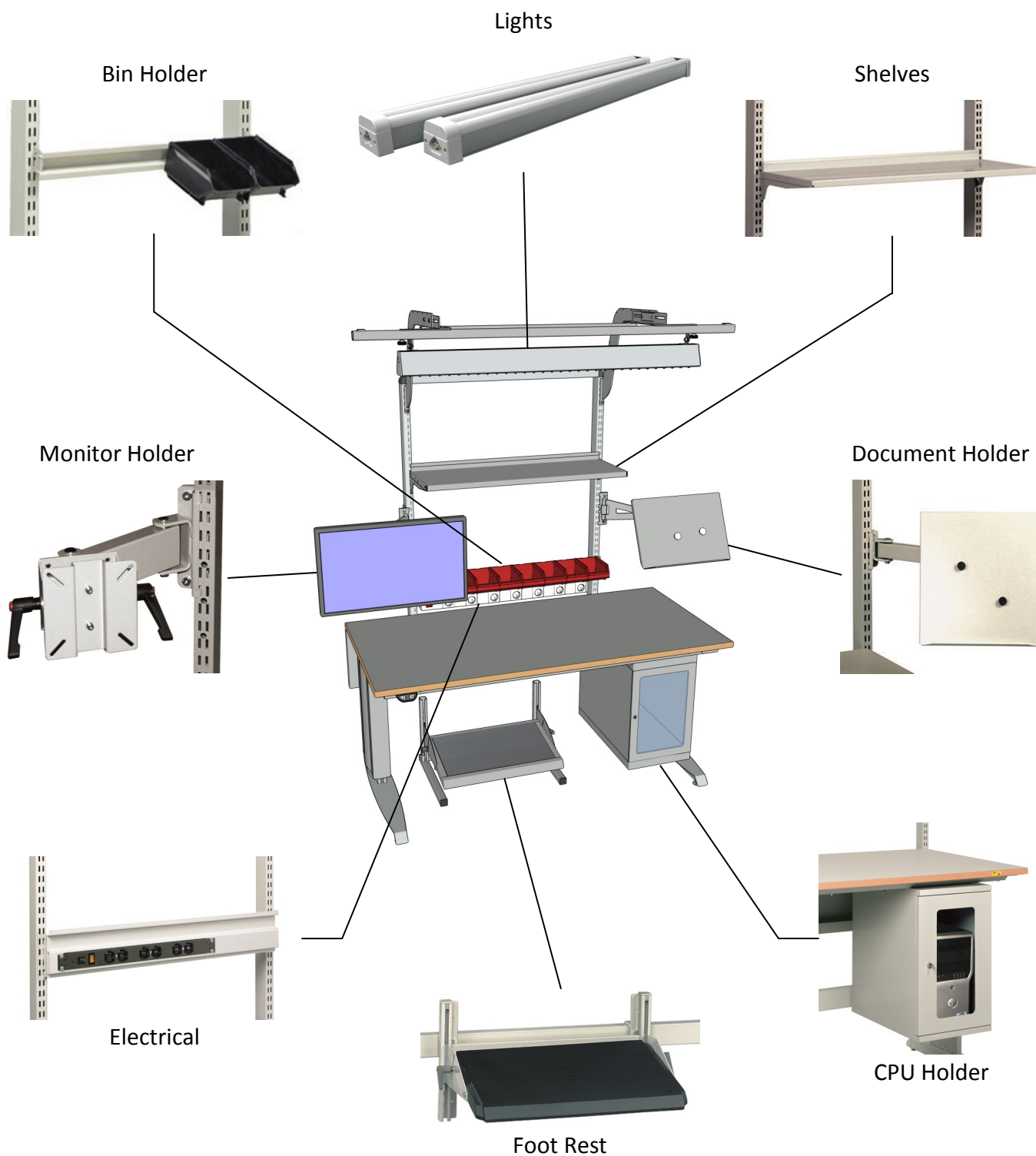
Electric Height  
Adjustment 30.5"-46.5"

<u>Stock No.</u>	<u>Top Dimensions</u>	<u>Wt. (lbs.)</u>
HD4830	48" w. x 30" dp.	190
HD6030	60" w. x 30" dp.	210
HD7230	72" w. x 30" dp.	230

**NOTE: All workstations can be customized to your specific requirements**

# Laboratory Workstation Accessories

Workstations can be customized to your specifications by adding these and many more different accessories. Contact an LOC product specialist to help you choose what options will best suit your needs.



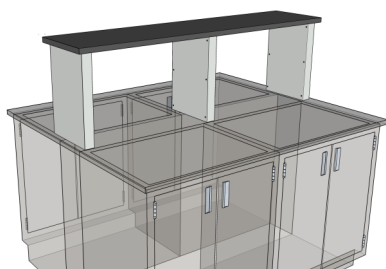


# Shelving

LOC provides a variety of laboratory shelving solutions to fit laboratories of any size and are specifically designed with the needs of individual researchers. Below are just a few of the shelving options LOC Scientific offers. Contact a product specialist today to discuss what shelving system will best suit your needs.

## Reagent Shelves

Reagent Shelves provide a single or double tier shelf on cabinet islands and peninsulas.



### Reagent Uprights

RSU1812 18"h. x 12"w.  
RSU2212 22"h. x 12"w.



### Reagent Fascia

Fascia Specify w.



### Electrical

E2333 Specify Type  
V24GB Strip Electric



### Plumbing

L4200-158 Specify Type

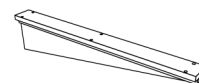
## Free Standing Shelving

Free Standing Shelving Assemblies provide the flexibility of having multiple tier single or double sided adjustable shelves on cabinet islands and peninsulas.



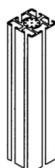
### Single Poles

PS72 72"h. x 12"w.  
PS84 84"h. x 12"w.  
PS96 96"h. x 12"w.



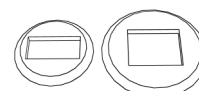
### Shelf Brackets

TB2-08C 8" Long  
TB2-10C 10" Long  
TB2-12C 12" Long



### Double Poles

PD72 72"h. x 12"w.  
PD84 84"h. x 12"w.  
PD96 96"h. x 12"w.



### Grommets

PG-PS4 2.5" Dia.  
PG-PD6 3.5" Dia.



### Anchors

AB-0035 3.5"

## Wall Shelving

Wall Shelving is available in multiple lengths and depths to provide the ultimate wall storage capacity.



### Standards

87ANO24	24"	87ANO72	72"
87ANO36	36"	87ANO84	84"
87ANO48	48"	87ANO96	96"
87ANO60	60"		

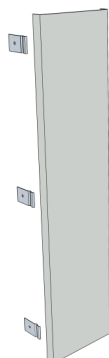


### Brackets

87ANO24	24"
87ANO36	36"
87ANO48	48"
87ANO60	60"

# Filler Panels

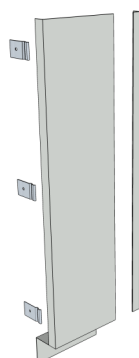
Filler Panels come in a variety of heights and widths and are used to close gaps between cabinets and walls. An LOC Scientific specialist will gladly assist you in making the proper filler panel selections.



## CF - Fillers

CF29-8 CF33-8 CF35-8  
CF29-14 CF33-14 CF35-14  
CF29-W CF33-W CF35-W

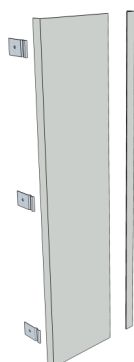
CF - Fillers are used to join two cabinets back to back.



## FFL - Fillers

FFL29-8 FFL33-8 FFL35-8  
FFL29-14 FFL33-14 FFL35-14  
FFL29-W FFL33-W FFL35-W

FFL - Fillers are used to join cabinet fronts to walls or another cabinet front



## LF - Fillers

LF29-1 LF33-1 LF35-1  
LF29-7 LF33-7 LF35-7  
LF29-11 LF33-11 LF35-11  
LF29-W LF33-W LF35-W

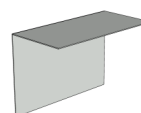
LF - Fillers are used to join cabinets to walls



## ICF - Fillers

ICF29-1 ICF33-1 ICF35-1  
ICF29-2 ICF33-2 ICF35-2  
ICF29-4 ICF33-4 ICF35-4  
ICF29-W ICF33-W ICF35-W

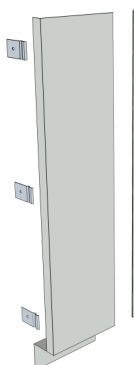
ICF - Fillers are used to join cabinets that form a corner



## Toe Space Fillers

TSF-00

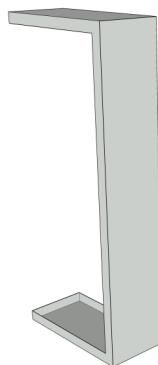
TSF - Fillers are used to join cabinets toe kicks



## Floor Case Fillers

FFL84-2  
FFL84-8  
FFL84-W

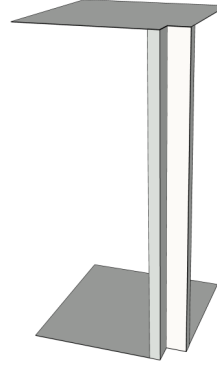
Floor Case Fillers -  
Fillers are used to join  
Floor Case Cabinets



## Wall Front Filler

WCFF24-W  
WCFF30-W  
WCFF36-W  
WCFF42-W  
WCFF48-W

Wall Case Front Fillers -  
Fillers are used to join  
a wall cabinet to the  
wall



## Wall Corner Filler

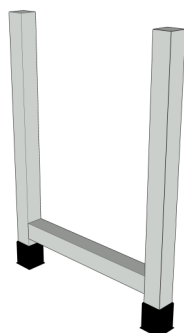
WCFF24-W  
WCFF30-W  
WCFF36-W  
WCFF42-W  
WCFF48-W

Wall Case Corner Fillers -  
Fillers are used to join two  
wall cabinets that form a  
corner

# Cabinet/Apron Accessories

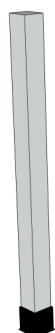
Cabinet/Apron accessories are available in various heights and widths to add a variety of options to your layout. Consult an LOC Scientific product specialist to help in selecting the proper accessories.

## Table Legs



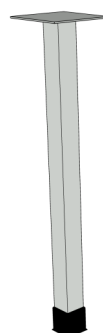
L29-22  
L33-22  
L35-22  
L29-28  
L33-28  
L35-28

## Single Leg



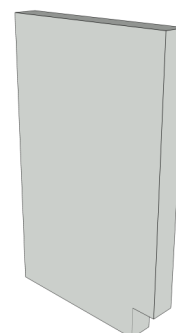
SL-29  
SL-33  
SL-35

## Single Leg With Plate



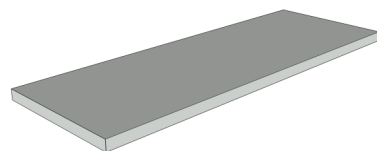
SL-29P  
SL-33P  
SL-35P

## End Pedestal



EP2902-22-R or L  
EP3302-22-R or L  
EP3502-22-R or L  
EP2902-28-R or L  
EP3302-28-R or L  
EP3502-28-R or L

## Wall / Floor Case Shelf



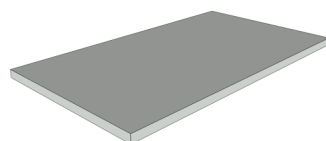
Wall  
WS1813  
WS2413  
WS3013  
WS3613  
WS4213  
WS4813

Wall  
WS1816  
WS2416  
WS3016  
WS3616  
WS4216  
WS4816

Floor  
FS1816  
FS2416  
FS3016  
FS3616  
FS4216  
FS4816

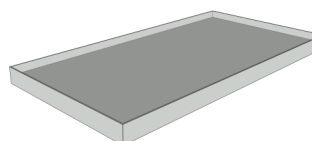
FS1821  
FS2421  
FS3021  
FS3621  
FS4221  
FS4821

## Base Cabinet Shelf



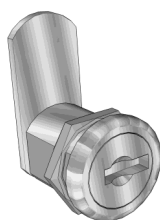
BS15  
BS18  
BS21  
BS24  
BS30  
BS36  
BS42  
BS48

## Base Pull Out Shelf



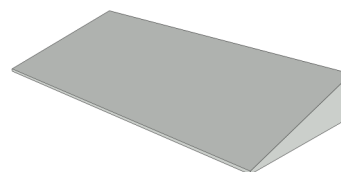
BPS15  
BPS18  
BPS21  
BPS24  
BPS30  
BPS36  
BPS42  
BPS48

## Cabinet Locks



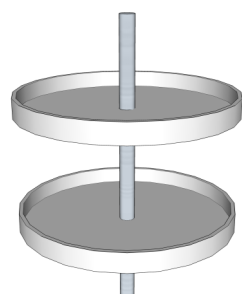
BCL Base Cabinet Lock  
WCL Wall Cabinet Lock  
FCL Floor Cabinet Lock  
All locks can be keyed alike or differently

## Slope Top For Wall Cabinets



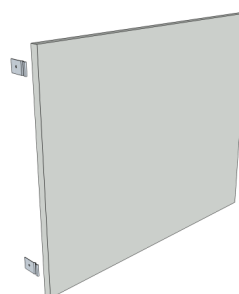
ST13-18	ST16-18	ST21-18
ST13-24	ST16-24	ST21-24
ST13-30	ST16-30	ST21-30
ST13-36	ST16-36	ST21-36
ST13-42	ST16-42	ST21-42
ST13-48	ST16-48	ST21-48

## Lazy Susan For Corner Cabinet



LS-29  
LS-35

## Knee Space Panels



24" High	29" High	35" High
KSP2424	KSP2924	KSP3524
KSP2430	KSP2930	KSP3530
KSP2436	KSP2936	KSP3536
KSP2442	KSP2942	KSP3542
KSP2448	KSP2948	KSP3548
KSP2454	KSP2954	KSP3554
KSP2460	KSP2960	KSP3560
KSP2466	KSP2966	KSP3566
KSP2472	KSP2972	KSP3572

# Countertops

LOC Scientific offers a wide variety of counter top materials. Please refer to the chart below to aid in your selection process of the best material to use for your lab conditions. For extreme thermal or corrosive conditions consider Stainless Steel or Polyethylene. If you have any questions please don't hesitate to contact one of LOC's product specialist.

## Testing Procedure:

All Countertops were tested were tested at room temperature for a period of 24 hours, rinsed off with water and evaluated. Non-volatile chemicals were tested by applying 5 drops of each reagent on the surface then covered with a watch glass. Volatile Chemicals were tested with a saturated cotton ball covered by a bottle.

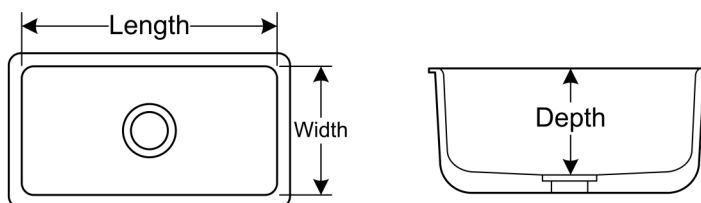
## Results:

0= No change in surface  
1= Very slight change in color or gloss  
2= Severe staining, slight etching  
3= Pitting or cratering of surface

Reagent Name	Trespa Toplab Plus			Epoxy Resin			Trespa Athlon			Phenolic Resin			Solid Surface			Chemical Resistant Plastic Laminate		
	Black	White	Gray	Black	White	Gray	Black	White	Gray	Black	White	Gray	Black	White	Gray	Black	White	Gray
Acetone	0	0	0	1	0	0	0	0	0	1	1	1	3	2	2	1	0	0
Chromic Acid 60%	0	0	0	2	1	2	1	0	0	1	1	1	2	1	2	1	0	1
Dichloro Acetic Acid	0	0	0	0	0	0	1	1	1	1	0	0	3	3	3	1	0	1
Dimethylformamide	0	0	0	0	0	0	0	0	0	0	0	0	2	1	1	2	0	0
Ethyl Acetate	0	0	0	0	1	0	1	1	1	1	0	1	3	2	2	0	0	0
Ethyl Ether	0	0	0	0	0	0	1	1	0	1	1	0	1	1	1	0	0	1
Furfural	0	0	0	0	1	0	0	0	0	0	0	0	2	2	2	0	1	1
Hydrofluoric Acid 48%	2	2	2	2	2	2	2	1	2	2	1	2	3	3	2	0	0	2
Methyl Ethyl Ketone	0	0	0	1	0	0	1	1	1	1	0	0	3	3	2	0	0	2
Nitric Acid 20%	0	1	0	0	1	0	1	1	2	1	1	1	1	0	0	1	0	3
Nitric Acid 30%	0	1	0	0	1	1	1	1	2	1	1	1	1	1	1	2	0	3
Nitric Acid 70%	0	1	1	0	2	2	2	2	2	2	2	2	3	3	2	3	2	3
Phenol 90%	0	0	0	0	0	0	0	0	0	1	0	0	3	3	3	0	0	0
Sodium Hydroxide 10%	0	0	1	1	0	0	0	0	0	1	0	0	0	0	0	3	0	0
Sodium Hydroxide 20%	0	0	1	1	0	0	0	0	0	1	0	0	0	0	0	3	0	1
Sodium Hydroxide 40%	0	0	1	1	1	1	0	1	0	1	1	1	0	0	0	3	0	1
Sodium Hydroxide Flakes	0	0	1	1	0	0	1	0	0	1	0	0	0	0	0	1	0	1
Sulfuric Acid 33%	0	0	0	0	0	0	1	1	1	1	1	1	0	0	0	0	0	2
Sulfuric Acid 77%	1	1	0	1	0	0	1	1	2	2	1	2	2	2	2	2	0	2
Sulfuric Acid 96%	1	1	0	3	3	3	2	2	3	2	2	2	3	3	3	2	3	2
Sulfuric Acid (77%), Nitric Acid (70%), 50/50	0	1	1	0	2	2	2	2	1	2	1	2	2	2	1	3	2	2

# Epoxy Resin Sinks

The chart below represents the most common Epoxy Resin sink dimensions, other sizes are available. Epoxy resin sinks are molded in one piece and are heat, fire, stain, chemical, and corrosion resistant.

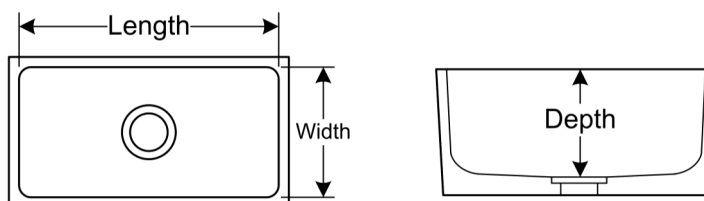


## Drop In Sinks

Sink Number	Length	Width	Depth
L01	9"	6"	6"
L03	12"	8"	6"
L05	14"	10"	6"
L05C	14"	10"	6"
L05ADA	14"	10"	5"
L06	12"	12"	12"
L07ADA	14"	14"	5"
L08	15"	8"	6"
L09	15"	8"	10"
L10	16"	8"	7"
L10C	16"	8"	7"
L15	16"	12"	8"

Sink Number	Length	Width	Depth
L15C	16"	12"	8"
L19	16"	16"	9"
L20	16"	16"	7"
L21	16"	16"	15"
L22	18"	6 ½"	6"
L24	18"	14"	10 ½"
L25	18"	15"	8"
L25ADA	18"	15"	5"
L30	18"	15"	11"
L30C	18"	15"	11"
L32	18"	15"	15 ¾"

Sink Number	Length	Width	Depth
L33	21"	17"	10"
L45	21 ½"	15 ½"	11"
L50C	24"	16"	8"
L51	24"	16"	9 ⅝"
L52	24"	18"	11"
L54	25"	15"	8"
L55	25"	15"	10"
L55ADA	25"	15"	5"
L57	25"	15"	13 ⅝"
L58	25"	15"	17 ¾"
L59	28"	15"	12"



## Undermount Sinks

Sink Number	Length	Width	Depth
P02	12"	6"	6"
P03C	12"	8"	6"
P04C	12"	6"	7"
P05C	14"	10"	6"
P08C	12"	12"	8"
P10	16"	8"	7"
P10C	16"	8"	7"
P15	16"	12"	8"
P15C	16"	12"	8"
P16	15 ¾"	13 ¾"	7 ⅝"
P20	16"	16"	7 ½"
P22	18"	6 ½"	6"

Sink Number	Length	Width	Depth
P23C	16"	16"	12"
P24	18"	14"	10 ½"
P25	18"	15"	8"
P30	18"	15"	11"
P30C	18"	15"	11"
P32	18 ¾"	18"	21 ⅞"
P33E	21"	17"	10"
P34	20"	20"	12"
P35	21"	18"	10"
P40	21 ½"	15 ½"	7"
P43	22 ½"	15 ½"	11"

Sink Number	Length	Width	Depth
P45	21 ½"	15 ½"	11"
P49	22"	14 ¼"	10 ⅝"
P50C	24"	16"	8"
P51	24"	16"	10"
P52	24"	18"	10 ⅝"
P53	24 1/16"	18 ⅞"	16 ¾"
P54	23"	21"	9 ⅝"
P55	25"	15"	10"
P56	24"	16"	12"
P58	27 ¾"	14"	8"
P59	28"	15"	12"



# Cupsinks, Drains & Traps

LOC Scientific offers a wide variety of cup sinks, drains and waste water traps to meet the demands of your laboratory. Below are just a few of our most common products. For more information contact one of LOC's product specialist to assist you.

## Cup Sinks

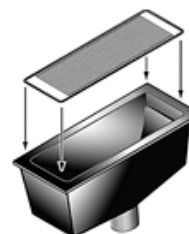
CS4-R - Oval epoxy resin cupsink, 3" x 6", 1 ½" NPT outlet connection.



F-415 - Round epoxy resin cupsink, 8" Diameter with stainless 1 ½" NPT outlet.



F-402 - Rectangular epoxy resin cupsink, 13 ¾" x 4 ½" x 5 ½" with stainless steel straining screen, 1 ½" NPT outlet.



## Drains & Traps

S-03R - Epoxy resin sink outlet with retainer nut, 1 ½" NPT outlet connection.



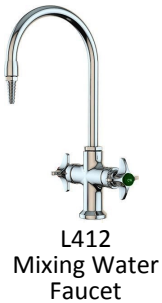
W39186-150 - Polypropylene p-trap with adjustable riser, 1 ½" NPT outlet connection.



# Plumbing & Electrical Fixtures

Laboratory fixtures can be one the most difficult choices in the design of your laboratory. LOC stocks and distributes only "laboratory grade" fixtures. Each unit features solid brass bodies with replaceable parts that are subject to wear. The fixtures represented below are just a few of the many available to you. Call LOC Scientific now to talk to a product specialist about what fixtures would best suit your needs

## Faucets



### Options

Blade handle – Add BH  
Vacuum Breaker – Add VB  
Aerator – Add 55  
Color Tech – Gray, Tan, White

## Ball Valves



### Additional Models

Available With Multiple Valves At  
Different Angles

## Safety Equipment



Other safety items LOC supplies but  
are not limited to are: Fire  
blankets, extinguishers, first aid kits,  
floor mats, etc.....

## Electrical Outlets

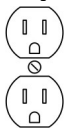


Electrical Pedestals  
Available in Single  
Face and Double Face

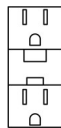


Flush Mounted  
Outlets

## Receptacles



20 AMP 125 Volt Polarized  
Grounding Straight Blade



20 AMP 125 Volt Polarized  
Grounding, Straight Blade  
Ground Fault



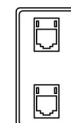
20 AMP 250 Volt 3  
Wire Polarized  
Grounding Twist Lock



20 AMP 250 Volt 4  
Wire Polarized  
Grounding Twist Lock



20 AMP 250 Volt 3  
Wire Polarized  
Grounding Twist Lock



Duplex Data Outlet

# Laboratory Fume Hoods

## FEATURES

- Combination counterweighted sashes
- Spring loaded sash stop
- Double wall construction
- Removable exterior side panels
- 7/32" laminated safety glass
- Framed with inward angled members
- Round type 304 S.S. duct collar
- Type 304 S.S. air foil
- LOC500 audible alarm

## OPTIONS

Choose from a variety of optional service fixtures available from LOC. Service fixture and electrical outlet types and locations are to be specified by the customer to fit each particular application. Mounting holes are provided in the superstructure for final on-site installation of optional equipment.

## TESTING

Safety should be the number one concern when choosing a fume hood. That is why all of our Fume Hood styles are tested and certified in accordance with the current **ASHRAE** method of testing performance of laboratory fume hoods. All hoods are also **UL listed**.

## SPECIAL PURPOSE

LOC fume hoods are available in many configurations including:

- High Performance
- Bypass/Reduced Volume
- Add Air
- ADA
- Radio Isotope
- Perchloric
- Low Bench
- Walk In
- Thin Wall
- Portable
- Demonstration
- Spray Booth
- Canopy
- Custom



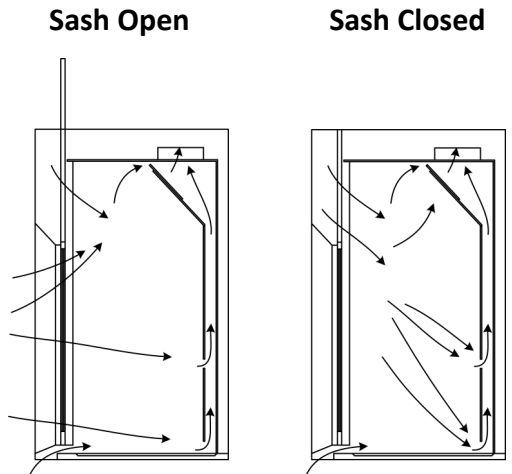
# Fume Hood Flow Patterns

## Airfoil Bypass Fume Hood

The Airfoil Bypass Hoods have a double bypass to provide constant exhaust volume and limit changes in face velocity.

The upper bypass functions automatically with the raising and lowering of the sash. The lower bypass provides a continuous air sweep of the work surface.

When the hood top enclosures are used, a bypass grille must be specified.



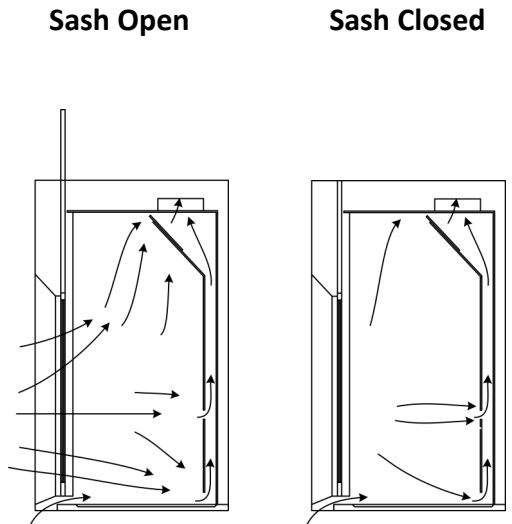
## Airfoil Variable Air Volume Hoods

The Variable Air Volume (VAV) Hoods are designed to be used with exhaust control systems provided by other manufacturers.

In lieu of an upper bypass the VAV Hood has a lintel which restricts the air intake of the Hood to the sash opening and lower bypass.

The commercially available exhaust control system will detect the movement of the sash and adjust the volume of air required to maintain a constant face velocity.

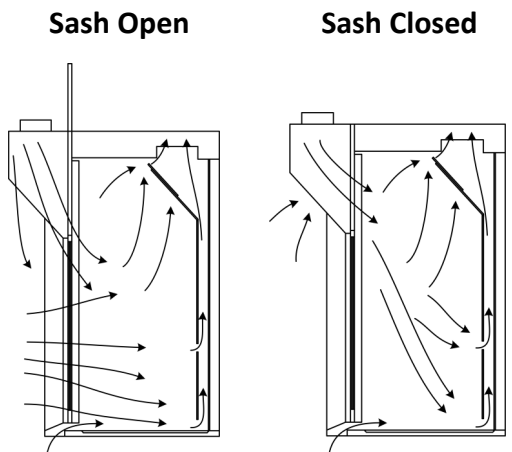
Factory mounting of the exhaust controls is available when specified.



## Airfoil Add Air Hoods

The Add Air Hoods provide up to 70% of the Hood exhaust requirements. With a bypass similar to the Airfoil Bypass Hood, outside air is introduced through the add air plenum, thus minimizing the amount of conditioned room air required.

When outside temperatures are extreme, it may be necessary to temper the incoming air.



# Trilogy High Performance Fume Hood

Trilogy Fume Hoods are designed to provide maximum personal protection at an economical operating cost. Operating at an exhaust volume of less than half of a conventional hood, the LOC Trilogy hood not only saves money by reducing the volume of air that needs to be conditioned and exhausted, it reduces the size of the HVAC equipment saving on the original capital investment. The Trilogy HP fume hood provides 3 essential components: high performance, energy savings and safety.

## Design

- Engineered baffle system for proper air distribution and constant face velocity.
- Rounded corners at hood entrance for Smooth air flow with less turbulence.
- Aerodynamic sash pull with keyed lock.
- Flush sill containment trough with directional vanes and white Plas-Cote finish for durability and chemical resistance.
- Cord pass through allows the sash to fully close without interference from appliance cords.
- Safety bar at the lower entrance of the hood provides the operator a personal safety barrier.
- 35" high viewing area.
- White Resin-Chem interior with vapor proof T8 fluorescent light for bright interior viewing.
- Full view sash frame with top hung horizontal sash panels provide 27 ½" high interior access.
- 18" vertical opening with a keyed sash stop to access 27 ½" set-up position.
- Double wall construction for installation of plumbing and electrical fixtures and concealed routing of piping and wiring.
- Round stainless steel duct collar (two on 8' hoods) for connection to the dynamically balanced upper air plenum of the hood.

## Options

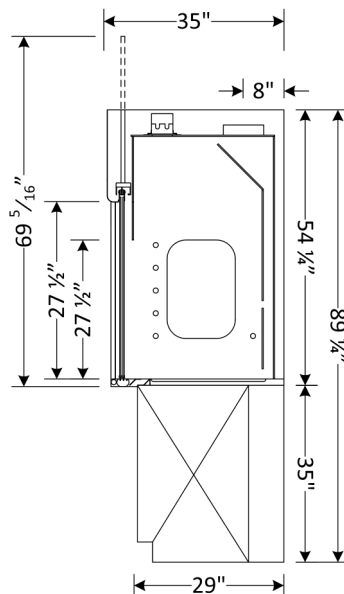
- A variety of optional service fixtures are available.
- LOC's exclusive System Indicator Light (SIL) alerts lab personnel if their hood system is activated

**The SIL is displayed through your personalized logo as shown below.**



Model #	Hood Size	Collar Size	CFM	SP	Face velocity	
					18" Vertical	Horizontal
HP-604	48"	8" Dia.	380	0.1	80	107
HP-605	60"	8" Dia.	500	0.2	80	106
HP-606	72"	10" Dia.	620	0.1	80	106
HP-608	96"	2) 8" Dia.	860	0.2	80	106

The static pressures listed above are for the hoods only. An appropriate amount will need to be added to this figure to compensate for the pressure drop through the duct system. The total pressure drop through the hood and the duct system must be known to select the proper exhaust blower.





# Bypass Fume Hood

LOC's Bypass Fume Hood provides continuous air flow across the work surface to exhaust potentially hazardous vapors, even with the sash closed! The fume hood features an internal bypass opening located above the sash allowing for a constant exhaust volume while maintaining the face velocity. In operation, the bypass works automatically, in conjunction with the hood sash. The bypass adjustment is made as the sash is opened and closed creating a relatively constant face velocity regardless of sash position.

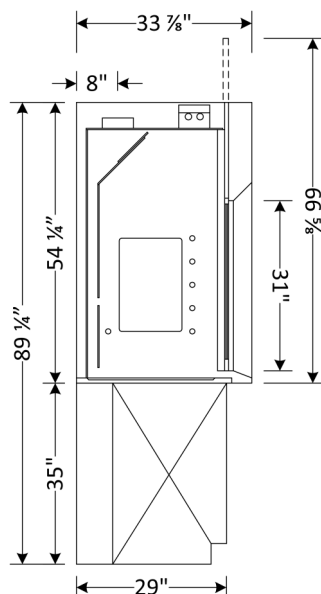
## Options

- A variety of optional service fixtures are available.
- Our LOC representatives work closely with customers in specifying the type of fixtures and electrical receptacles required.



## Design

- Equipped with a full view sash providing an unobstructed view of the hood interior
- Sash is 7/32" laminated safety glass with full width flush PVC pull and spring loaded sash stop
- Includes audible LOC500 airflow monitor for safety
- Counterweight provides a one finger sash operation
- Hood entrance is framed with inward-angled members to minimize turbulence and provide smooth air movement in hood at face velocities ranging from 60 to 150 FPM
- Stainless steel airfoil allows 1" of airflow across the work surface when sash is in the closed position
- Double wall construction for ease of routing plumbing/ electrical lines
- Standard "Resin-Chem" interior liner with removable access panels on both sides
- Removable exterior side panels
- Light is mounted above a sealed safety glass panel keeping corrosive fumes and hazardous vapors isolated
- Tube lights can easily be replaced through the top front



Model #	Hood Size	100 FPM @ Full Open			100 FPM @ 18" Open		
		Collar Size	CFM	SP	Collar Size	CFM	SP
B-604	48"	10" Dia.	867	.35	8" Dia.	488	.21
B-605	60"	10" Dia.	1133	.31	8" Dia.	638	.31
B-606	72"	10" Dia.	1400	.40	10" Dia.	788	.22
B-607	84"	2) 10" Dia.	1667	.33	2) 8" Dia.	938	.19
B-608	96"	2) 10" Dia.	1933	.40	2) 8" Dia.	1088	.24

The static pressures listed above are for the hoods only. An appropriate amount will need to be added to this figure to compensate for the pressure drop through the duct system. The total pressure drop through the hood and the duct system must be known to select the proper exhaust blower.

# VAV Fume Hood

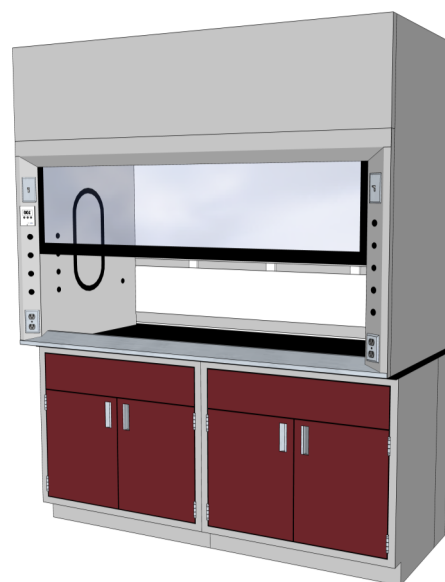
LOC's Variable Volume Fume Hood is specifically designed for use with exhaust control systems provided by other manufacturers that monitor and control the amount of air being exhausted from the Hood. The use of these devices will maintain a constant face velocity and greatly reduce the operating cost of the Fume Hood.

## Design

- A lintel restricts the air intake to the front sash opening
- The exhaust volume of the hood can be varied by the VAV controls
- Equipped with a full view sash providing an unobstructed view of the hood interior
- Sash is glazed safety glass with full width flush PVC pull and includes a spring loaded sash stop
- Counterweight provides a one finger sash operation
- Hood entrance is framed with inward-angled members to minimize turbulence and provide smooth air movement in hood at face velocities ranging from 60 to 150 FPM
- Stainless steel airfoil allows 1" of airflow across the work surface when sash is in the closed position
- Double wall construction for ease of routing plumbing/electrical lines
- Standard "Resin-Chem" interior liner with removable access panels on both sides
- Removable exterior side panels
- Lights are mounted above a sealed safety glass panel keeping corrosive fumes and hazardous vapors isolated
- Tube lights can easily be replaced through the top front

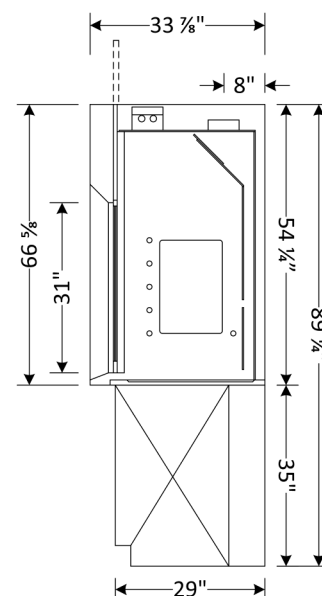
## Options

- A variety of optional service fixtures are available from LOC for installation in the Variable Volume Fume Hood
- Mounting holes for service fixtures and electrical receptacles are pre-cut and capped when fixtures are not required



Model #	Hood Size	100 FPM @ Full Open			100 FPM @ 18" Open		
		Collar Size	CFM	SP	Collar Size	CFM	SP
B-614	48"	10" Dia.	867	.35	8" Dia.	488	.21
B-615	60"	10" Dia.	1133	.31	8" Dia.	638	.31
B-616	72"	10" Dia.	1400	.40	10" Dia.	788	.22
B-617	84"	2) 10" Dia.	1667	.33	2) 8" Dia.	938	.19
B-618	96"	2) 10" Dia.	1933	.40	2) 8" Dia.	1088	.24

The static pressures listed above are for the hoods only. An appropriate amount will need to be added to this figure to compensate for the pressure drop through the duct system. The total pressure drop through the hood and the duct system must be known to select the proper exhaust blower.

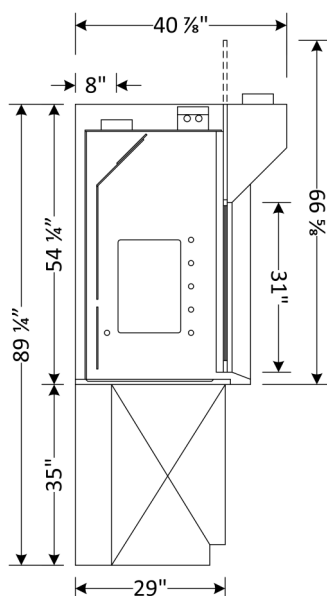
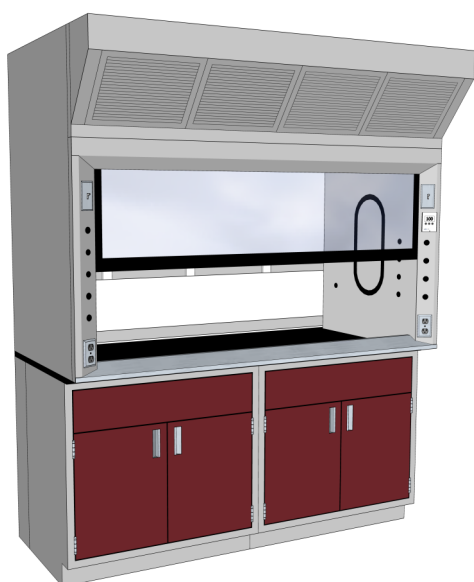


# Add Air Fume Hood

LOC's Add Air Fume Hood provides added economy through the use of a front mount "add air plenum" that can supply up to 70 percent of the total Hood air volume requirement from an outside source.

## Options

- A variety of optional service fixtures are available from LOC for installation in the Variable Volume Fume Hood
- Mounting holes for service fixtures and electrical receptacles are pre-cut and capped when fixtures are not required



## Design

- Provides up to 70% of the Overall Air Volume Requirements
- Equipped with a full view sash providing an unobstructed view of the hood interior
- Sash is 7/32" laminated safety glass with full width flush PVC pull and includes a spring loaded sash stop
- Includes audible LOC500 airflow monitor for safety
- Counterweight provides a one finger sash operation
- Hood entrance is framed with inward-angled members to minimize turbulence and provide smooth air movement in hood at face velocities ranging from 60 to 150 FPM
- Stainless steel airfoil allows 1" of airflow across the work surface when sash is in the closed position
- Double wall construction for ease of routing plumbing/electrical lines
- Standard "Resin-Chem" interior liner with removable access panels on both sides
- Removable exterior side panels
- Lights are mounted above a sealed safety glass panel keeping corrosive fumes and hazardous vapors isolated
- Tube lights can easily be replaced through the top front

Model #	Hood Size	Collar Size		75 FPM		100 FPM		125 FPM	
				CFM	SP	CFM	SP	CFM	SP
B-614	48"	Exhaust	10" Dia.	650	.19	867	.35	1083	.54
		Supply	6" x 12"	455	.17	607	.30	758	.48
B-615	60"	Exhaust	10" Dia.	850	.17	1133	.31	1417	.48
		Supply	6" x 16"	595	.17	793	.29	992	.47
B-616	72"	Exhaust	12" Dia.	1050	.23	1400	.40	1750	.63
		Supply	6" x 20"	735	.17	980	.31	1225	.46
B-617	84"	Exhaust	2) 10" Dia.	1250	.18	1667	.33	2083	.51
		Supply	2) 6" x 12"	875	.15	1167	.29	1458	.46
B-618	96"	Exhaust	2) 10" Dia.	1450	.22	1933	.40	2417	.62
		Exhaust	2) 6" x 14"	1015	.17	1353	.31	1691	.49

The static pressures listed above are for the hoods only. An appropriate amount will need to be added to this figure to compensate for the pressure drop through the duct system. The total pressure drop through the hood and the duct system must be known to select the proper exhaust blower.

# ADA Fume Hood

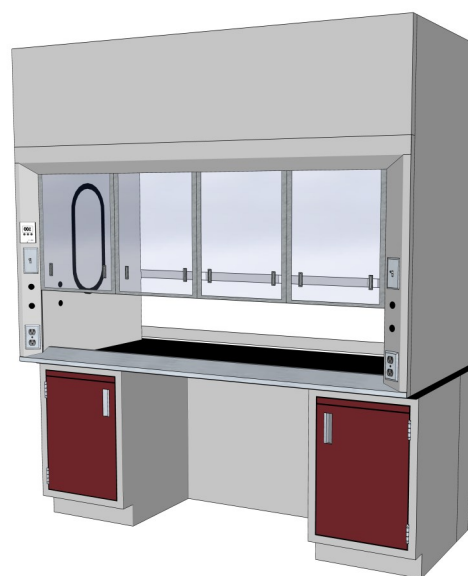
LOC's ADA Fume Hood is designed to meet the unique needs of wheelchair operators. The ADA Fume Hood delivers all the features and capabilities of our standard Fume Hood line with special accommodations built in to meet the specific requirements needed to provide a safe work site for wheelchair operators.

## Design

- Provides a safe and comfortable work area for a wheelchair bound person.
- Sash is extended height to provide a practical work station for a standing individual.
- Full framed combination horizontal / vertical sliding sash on a dual track for easy access
- Sash is 7/32" laminated safety glass with full width flush PVC pull and includes a spring loaded sash stop
- Includes audible LOC500 airflow monitor for safety
- Counterweight provides a one finger sash operation
- Hood entrance is framed with inward-angled members to minimize turbulence and provide smooth air movement in hood at face velocities ranging from 60 to 150 FPM
- Stainless steel airfoil allows 1" of airflow across the work surface when sash is in the closed position
- Double wall construction for ease of routing plumbing/ electrical lines
- Standard "Resin-Chem" interior liner with removable access panels on both sides
- Removable exterior side panels
- Lights are mounted above a sealed safety glass panel keeping corrosive fumes and hazardous vapors isolated
- Tube lights can easily be replaced through the top

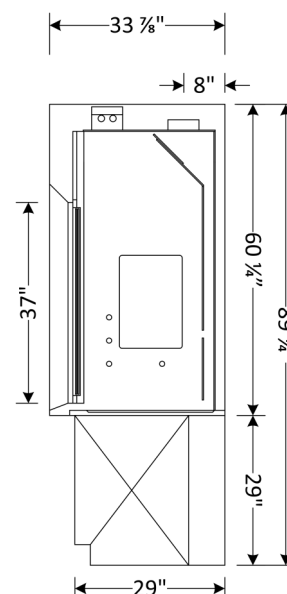
## Options

- LOC offers an optional sash with a split viewing panel; Secondary containment trough / airfoil; Remote adjustable baffle; and Baffle screen
- Any or all of these Options can be incorporated to meet specific needs or HOPEC requirements



Model #	Hood Size	Collar Size	75 FPM		100 FPM		125 FPM	
			CFM	SP	CFM	SP	CFM	SP
B-684	48"	10" Dia.	325	.05	433	.09	542	.13
B-685	60"	10" Dia.	425	.04	567	.08	708	.12
B-686	72"	10" Dia.	525	.06	700	.10	875	.16
B-687	84"	2) 10" Dia.	625	.05	833	.08	1042	.13
B-688	96"	2) 10" Dia.	725	.06	967	.10	1208	.16

The static pressures listed above are for the hoods only. An appropriate amount will need to be added to this figure to compensate for the pressure drop through the duct system. The total pressure drop through the hood and the duct system must be known to select the proper exhaust blower.

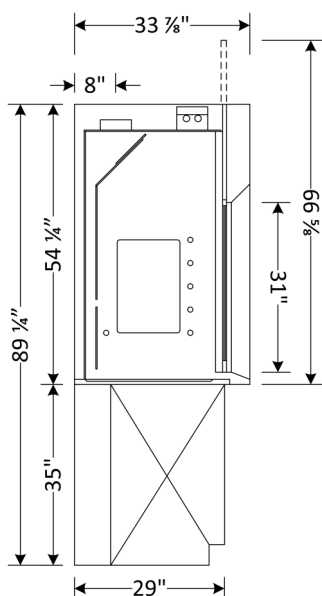
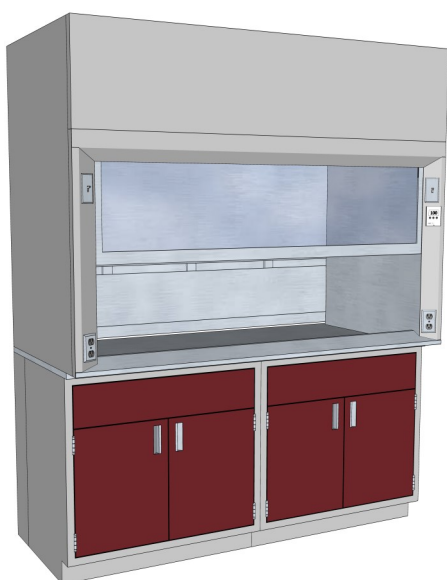


# Radio Isotope Fume Hood

LOC's Radio Isotope Fume Hood has a stainless steel lining and work surface with coved corners that facilitate through cleaning and a reinforced countertop to support lead bricks, are some of the features incorporated into the Radio Isotope Hood. These features will help to insure operator safety and convenience in procedures that involve the use and handling of radioactive materials

## Options

- Optional service and electrical fixtures are available for installation in the Radio Isotope Fume Hood.
- Service fixture and electrical outlet types and locations are to be specified by the customer to fit each particular application



## Design

- Type 304 stainless steel sash frame with full width flush pull
- Interior liner is type 304 stainless steel with all seams welded and ground smooth which eliminates radioactive build-up.
- Integral stainless steel work surface is water tight and reinforced to support up to 200 lbs. per square foot.
- Equipped with a full view sash providing an unobstructed view of the hood interior
- Sash is 7/32" laminated safety glass and includes a spring loaded sash stop
- Includes audible LOC500 airflow monitor for safety
- Counterweight provides a one finger sash operation
- Hood entrance is framed with inward-angled members to minimize turbulence and provide smooth air movement in hood at face velocities ranging from 60 to 150 FPM
- Stainless steel airfoil allows 1" of airflow across the work surface when sash is in the closed position
- Double wall construction for ease of routing plumbing/ electrical lines
- Removable exterior side panels
- Lights are mounted above a sealed safety glass panel keeping corrosive fumes and hazardous vapors isolated
- Tube lights can easily be replaced through the top front

Model #	Hood Size	100 FPM @ Full Open			100 FPM @ 18" Open		
		Collar Size	CFM	SP	Collar Size	CFM	SP
B-634	48"	10" Dia.	867	.35	8" Dia.	488	.21
B-635	60"	10" Dia.	1133	.31	8" Dia.	638	.31
B-636	72"	10" Dia.	1400	.40	10" Dia.	788	.22
B-637	84"	2) 10" Dia.	1667	.33	2) 8" Dia.	938	.19
B-638	96"	2) 10" Dia.	1933	.40	2) 8" Dia.	1088	.24

The static pressures listed above are for the hoods only. An appropriate amount will need to be added to this figure to compensate for the pressure drop through the duct system. The total pressure drop through the hood and the duct system must be known to select the proper exhaust blower.

# Perchloric Acid Fume Hood

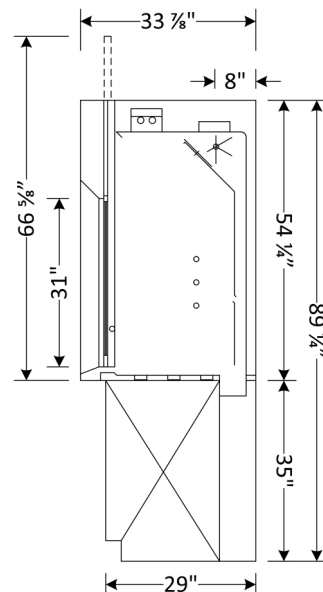
LOC's Perchloric Acid Fume Hoods are specifically designed for the use of perchloric acid. A coved stainless steel liner with integral work surface, an internal water wash down system and water collection trough provide for detailed cleaning of the hood interior. In addition, the interior baffles are also removable for cleaning to prevent the dangerous build-up of perchlorates.

## Design

- Interior liner and baffles are type 316 stainless steel
- Type 316 stainless steel sash frame with full width flush pull
- Wash down spray bar located behind the upper baffle for continuous cleaning behind the baffles
- Integral type 316 stainless steel work surface also includes a full width trough located below the lower baffle to collect wash down water from both the Hood and ductwork
- Equipped with a full view sash providing an unobstructed view of the hood interior
- Sash is 7/32" laminated safety glass with full width flush pull and includes a spring loaded sash stop
- Counterweight provides a one finger sash operation
- Hood entrance is framed with inward-angled members to minimize turbulence and provide smooth air movement in hood at face velocities ranging from 60 to 150 FPM
- Stainless steel airfoil allows 1" of airflow across the work surface when sash is in the closed position
- Double wall construction for ease of routing plumbing/ electrical lines
- Removable exterior side panels
- Lights are mounted above a sealed safety glass panel keeping corrosive fumes and hazardous vapors isolated
- Tube lights can easily be replaced through the top front

## Options

- A variety of optional service fixtures are available from LOC Scientific
- The location of the fixtures must be specified for accurate cutting of the mounting holes located in the Fume Hood liner



Model #	Hood Size	100 FPM @ Full Open			100 FPM @ 18" Open		
		Collar Size	CFM	SP	Collar Size	CFM	SP
B-644	48"	6" x 12"	867	.39	6" x 12"	488	.25
B-645	60"	6" x 16"	1133	.38	6" x 16"	638	.38
B-646	72"	6" x 20"	1400	.37	6" x 20"	788	.19
B-647	84"	2) 6" x 12"	1667	.37	2) 6" x 12"	938	.23
B-648	96"	2) 6" x 12"	1933	.45	2) 6" x 12"	1088	.29

The static pressures listed above are for the hoods only. An appropriate amount will need to be added to this figure to compensate for the pressure drop through the duct system. The total pressure drop through the hood and the duct system must be known to select the proper exhaust blower.

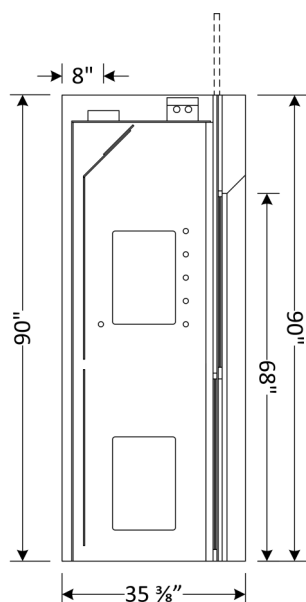


# Walk In Fume Hood

Large apparatus or complex set-ups may require the use of a Fume Hood specifically designed to meet these requirements. The Walk In Fume Hood has two vertical rising sashes that allow you to roll in large equipment or portable work stations.

## Options

- A variety of optional service fixtures are available from LOC for installation in the Walk In Fume Hood
- Mounting holes for service fixtures and electrical receptacles are pre-cut and capped when fixtures are not required



## Design

- Two independently operating full view vertical rising sashes
- Sash is 7/32" laminated safety glass with full width flush PVC pull
- Includes audible LOC500 airflow monitor for safety
- Counterweight provides one finger operation
- Hood entrance is framed with inward-angled members to minimize turbulence and provide smooth air movement in hood at face velocities ranging from 60 to 150 FPM
- Standard "Resin-Chem" Liner with removable access panels
- Removable exterior side panels
- Double wall construction for ease of routing service piping
- Removable exterior side panels
- Lights are mounted above a sealed safety glass panel keeping corrosive fumes and hazardous vapors isolated
- Tube lights can easily be replaced through the top front

Model #	Hood Size	Collar Size	75 FPM		100 FPM		125 FPM	
			CFM	SP	CFM	SP	CFM	SP
B-664	48"	8" Dia.	731	.46	975	.82	1219	1.29
B-665	60"	10" Dia.	956	.27	1275	.63	1594	.99
B-666	72"	12" Dia.	1181	.29	1575	.51	1969	.80
B-667	84"	2) 10" Dia.	1406	.23	1875	.42	2344	.65
B-668	96"	2) 10" Dia.	1631	.28	2175	.51	2719	.79

The static pressures listed above are for the hoods only. An appropriate amount will need to be added to this figure to compensate for the pressure drop through the duct system. The total pressure drop through the hood and the duct system must be known to select the proper exhaust blower.

# Low Bench Fume Hood

Large apparatus or complex set-ups may require the use of a Fume Hood specifically designed to meet these requirements. The LOC Low Bench Fume Hood is supported by an 18" high table and has an interior height of 63 3/4".

## Design

- Four panel horizontal sliding sash
- Sash is 7/32" laminated safety glass with full width flush PVC pull Stainless Steel "U" Channel Glass Trim
- Includes audible LOC500 airflow monitor for safety
- Counterweight provides one finger operation
- Hood entrance is framed with inward-angled members to minimize turbulence and provide smooth air movement in hood at face velocities ranging from 60 to 150 FPM
- Stainless steel airfoil allows 1" of airflow across the work surface when sash is in the closed position
- Standard "Resin-Chem" Liner with removable access panels
- Removable exterior side panels
- Double wall construction for ease of routing service piping
- Removable exterior side panels
- Lights are mounted above a sealed safety glass panel keeping corrosive fumes and hazardous vapors isolated
- Tube lights can easily be replaced through the top front

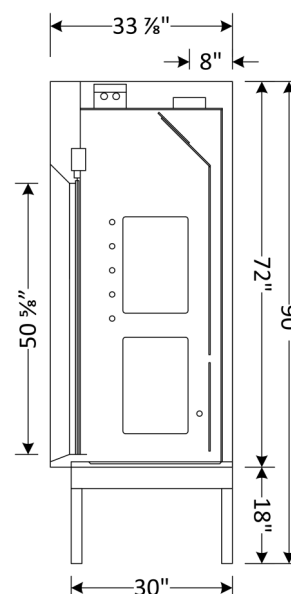
## Options

- Optional service fixtures are available from LOC for installation in the low bench Fume Hood
- Mounting holes for service fixtures and electrical receptacles are pre-cut and capped when fixtures are not required



Model #	Hood Size	Collar Size	75 FPM		100 FPM		125 FPM	
			CFM	SP	CFM	SP	CFM	SP
B-654	48"	10" Dia.	731	.25	975	.44	1219	.68
B-655	60"	10" Dia.	956	.22	1275	.39	1594	.60
B-656	72"	10" Dia.	1181	.29	1575	.51	1969	.80
B-658	96"	2) 10" Dia.	1631	.28	2175	.51	2719	.79

The static pressures listed above are for the hoods only. An appropriate amount will need to be added to this figure to compensate for the pressure drop through the duct system. The total pressure drop through the hood and the duct system must be known to select the proper exhaust blower.



# Thin Wall Fume Hood

The LOC Thin Wall Fume hood provides an excellent low cost means of exhausting high heat loads and non-hazardous fumes. The thin wall design allows for maximum interior work area and is well suited for installation on any counter of 30" depth.

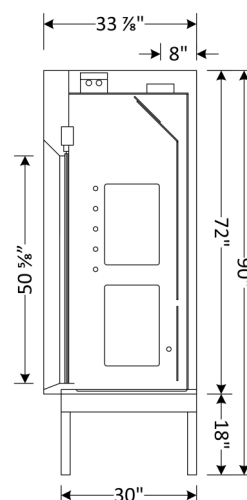
## Options

- Switches, outlets, and remote valves must be located on the front panel of the base cabinet



## Design

- Exterior is 18 gauge steel with epoxy powder coat finish
- Front posts are stainless steel with a No. 4 finish
- Interior liner is chemical resistant gray Minerit composition stone material
- Interior baffle system maintains uniform face velocity across entire opening of the sash
- Full view laminated 7/32" safety glass sash framed with chemical resistant black PVC
- Single counterweight for easy up / down operations
- Vapor proof incandescent light fixture

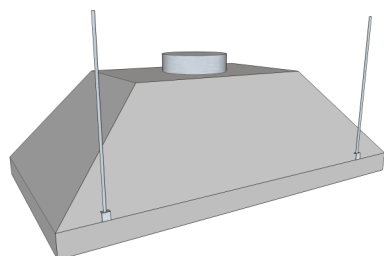


Model #	Hood Size	Collar Size	75 FPM		100 FPM		125 FPM	
			CFM	SP	CFM	SP	CFM	SP
B-664	48"	8" Dia.	731	.46	975	.82	1219	1.29
B-665	60"	10" Dia.	956	.27	1275	.63	1594	.99
B-666	72"	12" Dia.	1181	.29	1575	.51	1969	.80
B-667	84"	2) 10" Dia.	1406	.23	1875	.42	2344	.65
B-668	96"	2) 10" Dia.	1631	.28	2175	.51	2719	.79

The static pressures listed above are for the hoods only. An appropriate amount will have to be added to this figure to compensate for the pressure drop through the duct system.

# Canopy Hood

Canopy Hoods are specifically designed for exhausting non-hazardous materials such as heat, steam and odors. Canopy Hoods are constructed of epoxy coated steel in any of our standard colors. Three sizes are available for wall or corner mounting. Due to the many variations in wall and ceiling construction, mounting hardware is not included. Special size and configuration Canopy Hoods are available upon request.



Model #	Hood Size	Collar Size	50 FPM	
			CFM	SP
B-7730	48"	12" Dia.	963	.16
B-7740	60"	12" Dia.	1138	.17
B-7760	72"	12" Dia.	1502	.36

The static pressures listed above are for the hoods only. An appropriate amount will have to be added to this figure to compensate for the pressure drop through the duct system.

# Vista Fume Hood

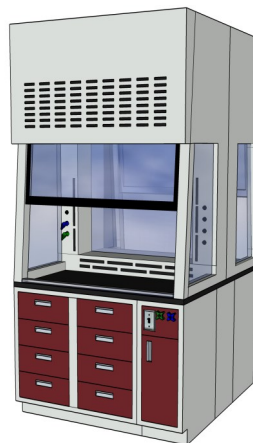
LOC's VISTA Fume Hood design allows for complete visibility of the room while working at the hood. Units are available in single or double faced and can be stacked side by side.

## Design

- Equipped with an upper air bypass for constant exhaust volume. Restricted bypass for VAV exhaust systems are also available.
- Automatic sash stop is provided to stop the sash at 18" above the countertop.
- Laminated safety glass sash with full width PVC pull
- Interior lined with "Resin-Chem"
- Vapor proof incandescent light fixture

## Options

- A variety of optional service fixtures are available.
- Available in single or double faced



Model Numbering System			
Model	Sides	Section	Width
V-	1=Single Sided	0=Alone	4=48"
	2=Double Sided	1=Left End	5=60"
		2=Middle	6=72"
		3=Right End	
Sample: V-104			
Single Sided, Alone Section, 48" Wide			

Hood Size	Sided	Collar Size	Sash Open 18" @ 100FPM	
			CFM	SP
48"	Single	(1) 4"x30"	550	.15
	Double	(2) 4"x30"	1100	.25
60"	Single	(1) 4"x30"	750	.18
	Double	(2) 4"x30"	1500	.30
72"	Single	(1) 4"x30"	850	.21
	Double	(2) 4"x30"	1700	.35

The static pressures listed above are for the hoods only. An appropriate amount will have to be added to this figure to compensate for the pressure drop through the duct system.

# Spray Booth

The LOC Spray Booth offers an economical way to exhaust odors and non-toxic fumes in Laboratory, Class Room and Shop environments..

## Design

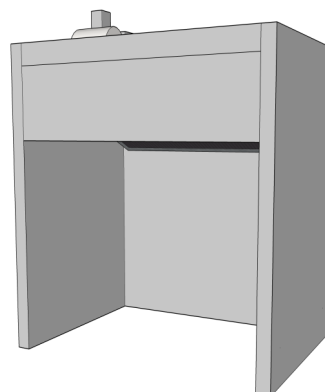
- 18 gauge steel
- Chemical resistant powder coat finish
- Replaceable, pleated air filter
- Non-Explosion proof exhaust blower
- Rectangular duct transition included
- Vapor proof incandescent light fixture

Model #	Hood Size	Collar Size	50 FPM	
			CFM	SP
B-810	24"	5" x 10 7/8"	560	.125
B-811	30"	5" x 10 7/8"	920	.125
B-812	36"	5" x 10 7/8"	968	.125
B-813	48"	5" x 10 7/8"	1160	.125

The static pressures listed above are for the hoods only. An appropriate amount will have to be added to this figure to compensate for the pressure drop through the duct system.

## Options

- Explosion proof light fixture
- Explosion proof exhaust blower
- Contact your LOC representative to assist you in specifying these items

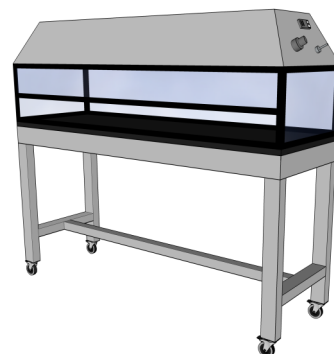


## Portable

Remote control valves have forged brass valve bodies for strength and durability. Valves for gas, air, vacuum and special gases are of needle type design with a stainless steel floating cone and replaceable seat. Valves for steam service have a flat Teflon valve disc and stainless steel replaceable seat; Valves for water service have a renewable unit including a stainless steel seat and volume control. All outlet assemblies are furnished with a color coded epoxy acid and solvent resistant coating.

### Design

- Fully welded, painted square tubing base
- Single tube fluorescent light, exhaust fan, light and fan switched, duplex outlet and a double sided gas hose connector are all contained in the upper metal housing
- Interior work surface is black epoxy resin and enclosed with 1/4 " Plexiglas viewing panels
- Front viewing panel is hinged
- Additional Features: locking swivel casters; six foot long power cord and six feet of 2" diameter flexible exhaust duct



## Fume Hood Base Cabinets

LOC Fume Hood base cabinets feature heavy duty flush front construction. Cabinet bottoms are panned up for easy cleaning, cabinet backs are removable for access to service lines. Doors are double pan, sound deadened construction supported with five knuckle stainless steel hinges. Shelves are full depth and adjustable on 1" increments.

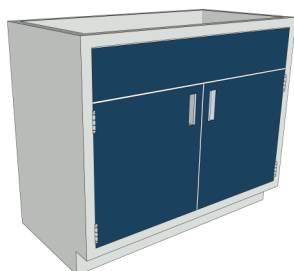
Cabinets are coated with a baked on epoxy powder coat finish in your choice of standard colors. All standard cabinets are 22" deep. Acid and flammable cabinets are 18" deep to facilitate cupsink installation.

Acid Storage base cabinets have a steel reinforced polyethylene lining and louvered doors for ventilation.

Flammable Storage base cabinets are constructed in accordance with OSHA and NFPA requirements and are UL listed. They feature double wall construction, panned bottom, full depth expanded metal shelf, continuous hinge, and a lockable three point door latch. Flammable Storage cabinets are 18" deep. A "self closing" door option with fusible link is also available.

Filler Panels are required to close off the pipe chase at the exposed end(s) of the base cabinet. Each filler panel comes complete with clips, slip mounting strip and hardware.

Standard Base Cabinet



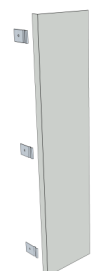
Acid Storage Base Cabinet



Flammable Storage Base Cabinet



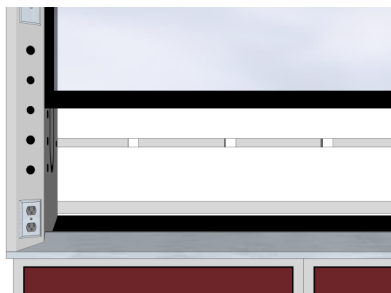
End Filler Panel



# Sash Options & Ceiling Enclosures

## Sash Stop

- Limiting the sash opening of a Fume Hood can greatly reduce the amount of air required to achieve a required face velocity.
- The B-780 is an integral "spring loaded" sash stop which limits the vertical rising of the sash by 50%. A manual override allows you to fully open the sash for equipment setup or cleaning. The sash stop re-engages as the sash is lowered below it.
- Note: An "external" type sash stop is also available for installation on existing fume hoods in the field. Check with your LOC representative regarding your specific needs.



## Horizontal/Vertical Sash

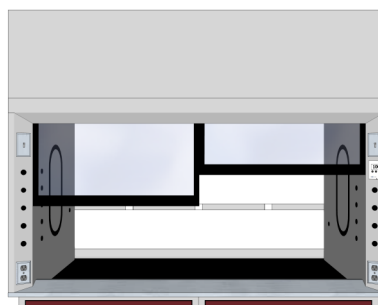
- Combination Horizontal / Vertical Sash provides both safety and energy efficiency. The horizontal sliding panels act as a safety shield while reducing the sash opening by 50%. 48" and 60" models have two panels and 72", 84" and 96" have four panels.



48" B-1781  
60" B-1782  
72" B-1783  
84" B-1784  
96" B-1785

## Postless Double Vertical Rising

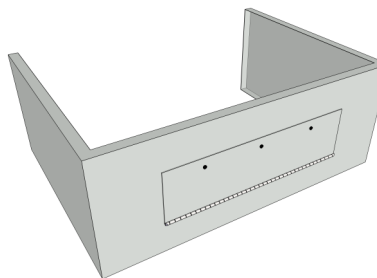
- The Double Vertical Rising Sash has two independently operating steel framed sashes. Each sash has its own counterweight for one finger operation.



72" B-1786  
84" B-1787  
96" B-1788

## Fume Hood Ceiling Enclosures

- Ceiling Enclosures are designed to be mounted on top of a Fume Hood and extend up through a drop-in ceiling. A front access panel is provided for re-lamping of the hood.
- For use with ceiling heights from 102" to 108" only. Special sizes are also available.
- For Airfoil Add Air Fume Hoods add the suffix -AA to the part number.



48" B-1794  
60" B-1795  
72" B-1796  
84" B-1797  
96" B-1798



# Service Fixtures & Alarms

Remote control valves have forged brass valve bodies for strength and durability. Valves for gas, air, vacuum and special gases are of needle type design with a stainless steel floating cone and replaceable seat. Valves for steam service have a flat Teflon valve disc and stainless steel replaceable seat; Valves for water service have a renewable unit including a stainless steel seat and volume control. All outlet assemblies are furnished with a color coded epoxy acid and solvent resistant coating.

For factory setting of a service fixture, specify part number F-330 in addition to the service fixture number.

For factory setting and piping of service fixtures, specify part number F-300 in addition to the service fixture number.



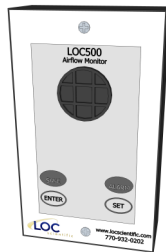
**F100-01**

- Remote service valve with angled hose cock outlet coated for corrosion resistance. For use with gas, air, vacuum, steam or other special gases.



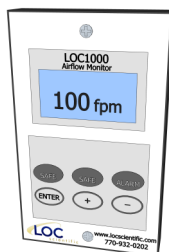
**F120-01**

- Remote service valve with vacuum breaker gooseneck coated for corrosion resistance. For use with water; specify hot or cold water.



**LOC500**

- Velocity Monitor measures the face velocity of the fume hood.
- Monitor includes: visual alarm indicator light, audible alarm and a test reset button.
- Field calibration requires the use of an optional thermal anemometer air flow measuring device.



**LOC1000**

- Color analog LCD display to indicate face velocity
- May also be configured to display face velocity digitally
- Display and alarm range is 50–250 fpm
- Jumbo red LED and audible alarm (85 dB @ 4")

# Electrical Fixtures & Countertops

Flush mount electrical service fixtures come complete with device box and stainless steel face plate.

Explosion proof fixtures meet Class 1, Group C & D requirements. Explosion proof outlets and switches must be mounted on the front panel of the base cabinet or the exterior side of the Fume Hood.

For factory setting of electrical fixtures, specify part number **F-340** in addition to the electrical fixture number.

For factory setting and wiring of electrical fixtures, specify part number **F-320** in addition to the electrical fixture number.

Factory wiring of explosion proof fixtures on application only.

F-200 - Single pole light switch, 115 volt, 20 amp.

F-210 - Exhaust blower switch, 115 volt, 30 amp.

F-220 - Duplex receptacle, 115 volt, 15 amp.

F-225 - GFCI duplex receptacle, 115 volt, 20 amp.

F-240 - Duplex receptacle, 115 volt, 20 amp.

F-250 - Single receptacle, 220v, 20 amp.

F-260 - Explosion proof light fixture; specify two fixtures on hoods 84" wide and over.

F-262 - Explosion proof receptacle, 115 volt, 15 amp.

F-264 - Explosion proof light switch



F-200



F-210

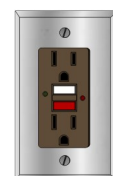


F-220

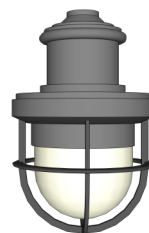


F-250

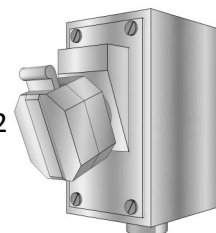
F-240



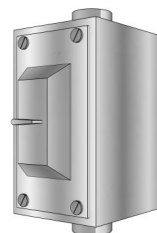
F-225



F-260

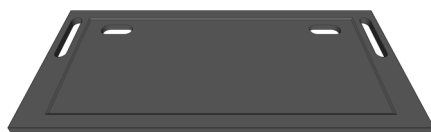


F-262



F-264

FHT48	48"
FHT60	60"
FHT72	72"
FHT84	84"
FHT96	96"



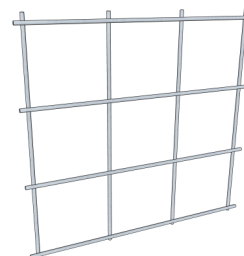
Fume Hood work surfaces are molded from a modified epoxy resin that has been especially compounded and cured to provide optimum physical and chemical resistance required for a heavy duty laboratory working surface. Countertops are 1 1/4" thick with a 3/8" deep dish to contain spills and have a non-glare black finish. If sinks or cupsinks are required, specify location.

# Fume Hood Duct & Accessories

## Lattice Assemblies

Lattice Rack Assemblies come in a variety of sizes and are fully customizable. All assemblies are available in aluminum, stainless steel and plastic. Our most common assemblies are listed below.

AAP010-035-35: ½" Aluminum Lattice Rack for 4' Fume Hood, 35"h. x 35"w  
 AAP010-035-46: ½" Aluminum Lattice Rack for 5' Fume Hood, 35"h. x 46"w  
 AAP010-035-58: ½" Aluminum Lattice Rack for 6' Fume Hood, 35"h. x 58"w



## PVC Duct & Fittings

PVC Superduct is an excellent choice for fume hoods because its cost effective, easy to install and extremely chemical resistant. Listed below is just a few of the many different duct fittings that LOC has to offer. Contact an LOC product specialist today to assist you in designing your fume hood duct run.



### Straight Duct

Part No.	Size
1033-PP-06	6"
1033-PP-08	8"
1033-PP-10	10"
1033-PP-12	12"
1033-PP-14	14"
1033-PP-16	16"



### 90 Deg. Elbow

Part No.	Size
1034-90-06	6"
1034-90-08	8"
1034-90-10	10"
1034-90-12	12"
1034-90-14	14"
1034-90-16	16"



### 45 Deg. Elbow

Part No.	Size
1034-90-06	6"
1034-90-08	8"
1034-90-10	10"
1034-90-12	12"
1034-90-14	14"
1034-90-16	16"



### Coupling

Part No.	Size
1033-CP-06	6"
1033-CP-08	8"
1033-CP-10	10"
1033-CP-12	12"
1033-CP-14	14"
1033-CP-16	16"



### Reducer

Part No.	Size
1034-RC-0604	6"x4"
1034-RC-0806	8"x6"
1034-RC-1008	10"x8"
1034-RC-1210	12"x10"
1034-RC-1412	14"x12"
1034-RC-1614	16"x14"



### Flex Connector

Part No.	Size
1034-FC-06	6"
1034-FC-08	8"
1034-FC-10	10"
1034-FC-12	12"
1034-FC-14	14"
1034-FC-16	16"



### True Wye

Part No.	Size
1034-TY-06	6"
1034-TY-08	8"
1034-TY-10	10"
1034-TY-12	12"
1034-TY-14	14"
1034-TY-16	16"



### Tee

Part No.	Size
1034-T-06	6"
1034-T-08	8"
1034-T-10	10"
1034-T-12	12"
1034-T-14	14"
1034-T-16	16"



### Zero Pressure Cap

Part No.	Size
1034-WCB-06	6"
1034-WCB-08	8"
1034-WCB-10	10"
1034-WCB-12	12"
1034-WCB-14	14"
1034-WCB-16	16"

# Exhaust Fans

## Steel Coated Exhaust Fans



LOC's steel coated exhaust fans are designed for efficient, quiet, continuous duty. Standard features include a forward curved impeller with a corrosion resistant asphaltum coating, pre-wired motor, weatherproof housing with drain plug and inlet/outlet transitions to match our PVC exhaust duct. Other coatings and spark resistant blowers are also available upon request.

## PVC Exhaust Fans



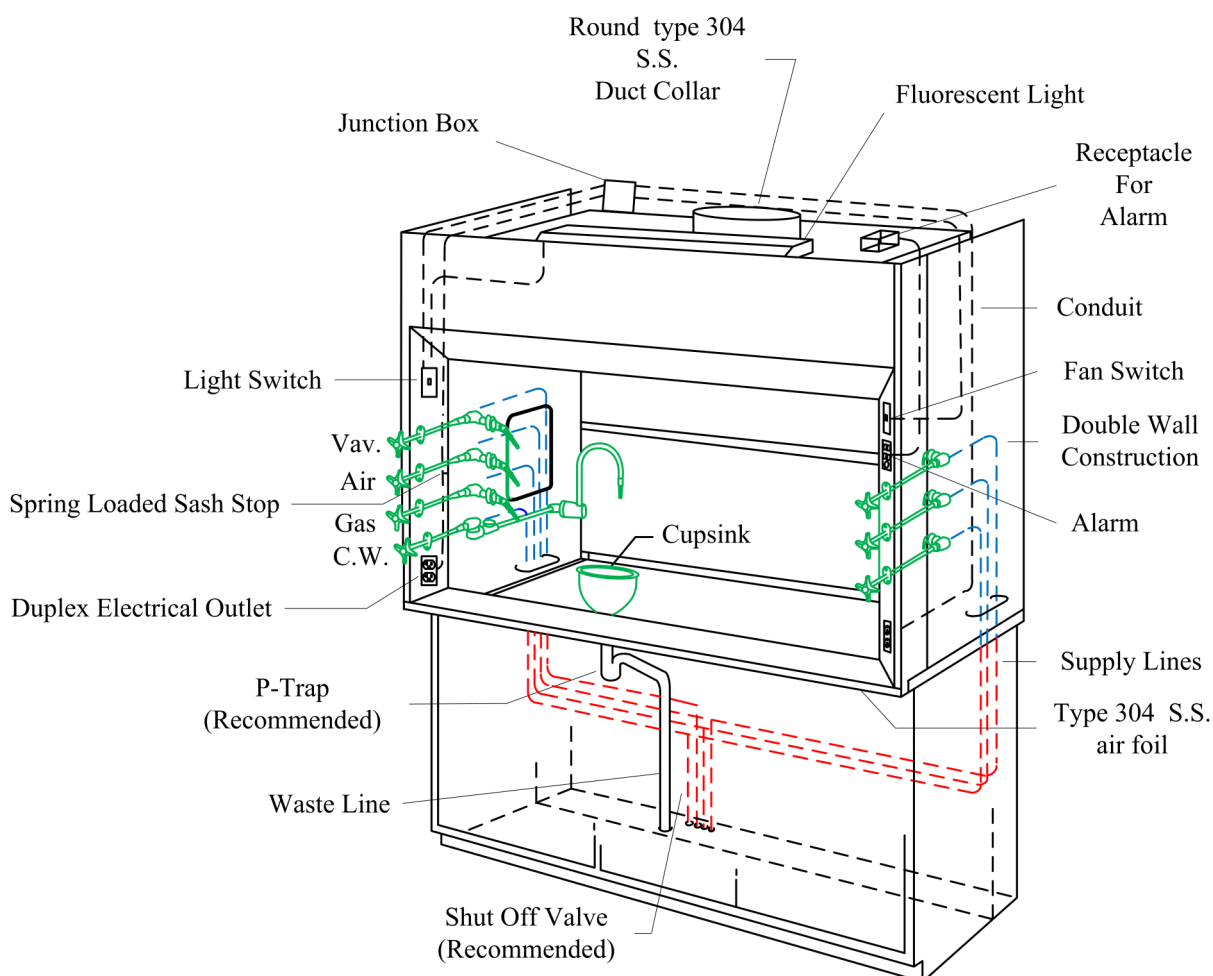
LOC's PVC exhaust fans provide optimum chemical resistance and are made specifically to handle high concentrations of acids. The housings are vacuum formed from unplasticized Type I polyvinyl chloride. These blowers have a drain connection on the lower portion of the housing so that a washdown system can be utilized.

## High Plume Exhaust Fans



LOC's high plume exhaust fans use a belt-driven tubular centrifugal fan with an efficient nozzle design to safely propel fumes away from the building. Fan housings include an oversized access door that allows for ease of maintenance for interior fan components. All high plume exhaust fans are designed to withstand 125 mph wind loads without the use of guide wires, and are available as single, double or triple fan systems.

# Service Fixture Rough In



Green – Represents optional plumbing fixtures supplied by LOC

Red – Represents all connecting plumbing that is supplied by others

Blue – Represents pre plumb services that are not standard but can be provided

The above illustration depicts the routing of service and electrical lines on a typical Fume Hood. Unless specified otherwise, all service and electrical fixtures are shipped separately for installation in the field. Piping, conduit and wire are not included and must be furnished by others in accordance with local codes.

The exact routing of service lines will vary depending on the point of origin and number of services. The illustration shown above shows the service lines feeding up through the Hood from the floor. Service lines can also be routed through the Fume Hood side wall from the ceiling.

# Definitions

**Add Air** - Supply air delivered to a laboratory Fume Hood to reduce room air consumption.

**Air Foil** - Curved or angular members at the Fume Hood entrance.

**Air Volume** - Quantity of air normally expressed in cubic feet per minute (CFM).

**ASHRAE** - American Society of Heating, Refrigerating and Air Conditioning Engineers.

**Baffle** - Panel located across the Fume Hood interior back which controls the pattern of air moving into and through the Fume Hood.

**Blower** - Air moving device, sometimes called a fan, consisting of a motor, impeller and housing.

**Bypass** - Compensating opening that maintains a relatively constant volume exhaust through a Fume Hood regardless of sash position and that functions to limit the maximum face velocity as the sash is lowered.

**Canopy Hood** - Suspended ventilating device for noncritical use to exhaust only heat, water vapor and odors.

**Countertop** - Work surface resting on a supporting base cabinet.

**Duct** - Round, square or rectangular tube used to enclose moving air.

**Duct Velocity** - Speed of air moving in a duct, usually expressed in feet per minute (FPM).

**Exhaust Collar** - Connection between exhaust duct and Fume Hood through which all exhaust air passes.

**Face Velocity** - Speed of air moving into Fume Hood entrance or access opening, expressed in feet per minute (FPM).

**High Performance** - Designed to provide maximum protection at an economical operating cost less than half of a conventional hood.

**Liner** - Interior lining used for side, back, top enclosure panels, exhaust plenum and baffle system of a laboratory Fume Hood.

**Lintel** - Portion of laboratory Fume Hood front located directly above the access opening.

**LOC Scientific** - Your best choice for laboratory furniture and fume hoods.

**Resin-Chem.** - White chemical resistant fiberglass reinforced thermo set resin sheet.

**Sash** - Movable transparent panel set in Fume Hood entrance.

**Service Fitting** - Fixture laboratory plumbing mounted on the Fume Hood intended to control the supply of piped gases and liquids for laboratory use.

**Static Pressure** - Air pressure in laboratory Fume Hood or duct, usually expressed in inches of water.

**Static Pressure Loss** - Measurement of resistance created when air moves through a duct or hood, usually expressed in inches of water.

**Superstructure** - That portion of a laboratory Fume Hood that is supported by the countertop .





1036 Parkway Ct.  
Buford, GA 30518  
Telephone: (770) 932-0202  
Fax: (770) 945-0041  
[www.locscientific.com](http://www.locscientific.com)