

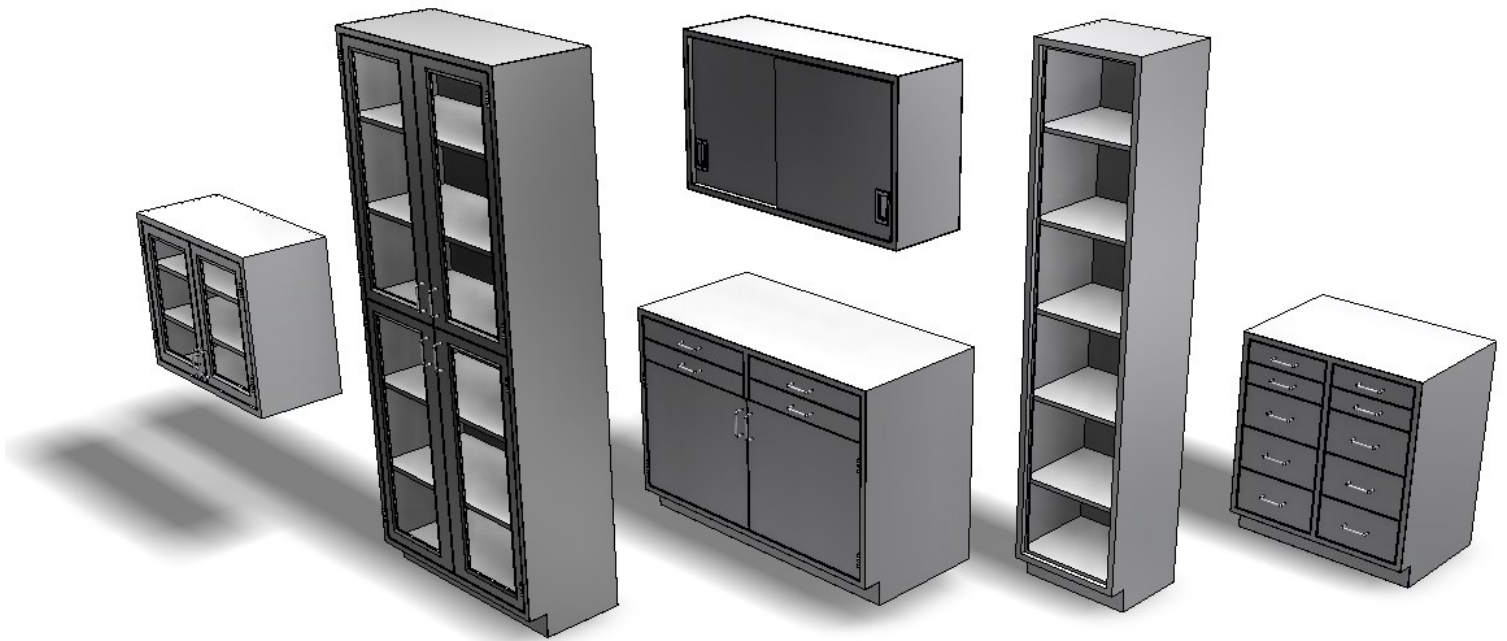


STAINLESS STEEL CASEWORK

Common Features

- Adjustable shelf
- Removable back
- Solid hinged door (units with doors)
- Lock options available

Made To Order Counter Cabinetry





STAINLESS STEEL CASEWORK

TABLE OF CONTENTS

Product Specification Guide/Drawer Dimension Table	1
---	----------

Technical Product Data

Part 1 - General	2
Part 2 - Products	3
Part 3 - Execution	5
Metric Conversion Tables	7

Standard Cabinet Construction Details

Base Cabinet	8
Wall Cabinet	9
Tall Storage Cabinets	10

Standard Cabinet Configurations

Base Cabinet	11
Wall Cabinet	23
Tall Storage Cabinets	30

Casework Accessories

Base Cabinet Scribes & Fillers	35
Base Cabinet Knee Space Components	38
Wall Cabinet Scribes & Fillers	41
Tall Storage Cabinet Scribes & Fillers	42
Sloped Tops for Wall and Tall Storage Cabinets	43





STAINLESS STEEL CASEWORK

PRODUCT SPECIFICATION GUIDE

PRODUCT NUMBER CODE

Example: BA362235

Cabinet Type _____ **B**
 B = Base Units
 W = Wall Units
 T = Tall Units

Cabinet Configuration _____ **A**

Cabinet Width _____ **36**
 (nominal)

Cabinet Depth _____ **22**
 (nominal)

Cabinet Height _____ **35**
 (nominal)

Door Swing _____ **L**
 L = Left Hand
 R = Right Hand

Lock _____ **LK**
 (add only when required)

DRAWER DIMENSION TABLE

	Sitting Height Cabinets	Standing Height Cabinets
1/8 high drawer	*2 3/4"	*3 1/2" deep
1/4 high drawer	*5 1/2"	*7" deep
1/2 high/file drawer	*11" deep	*14" deep

*Nominal drawer face height—deduct 1.125" for interior drawer pan depth





STAINLESS STEEL CASEWORK

TECHNICAL PRODUCT DATA

Part 1 – General

1.1 SCOPE OF WORK

Includes all factory fabricated stainless steel casework as required by the project drawings.

1.2 TYPICAL INCLUSIONS

- A. Base and wall units.
- B. Tall storage units.
- C. Recessed units.
- D. Pass through units.
- E. Knee space rails.
- F. Miscellaneous fillers and scribes.

1.3 TYPICAL EXCLUSIONS

- A. Vinyl or rubber base.
- B. Wall framing and in-wall backing for anchorage support.
- C. Electrical.
- D. Mechanical.
- E. Work not directly associated with the stainless steel casework.

1.4 MATERIALS

- A. Cabinetry fabricated from T304 stainless steel sheet, (T316 stainless steel available at additional cost) conforming to ASTM A240. All exposed surfaces polished to a No. 4 brushed satin finish. (150/180 grit.)
- B. Glass for glazed hinged and sliding doors shall be ¼" thick clear float tempered glass.

1.5 PERFORMANCE REQUIREMENTS

Casework and components shall withstand the following minimum loads without damage to components or casework operations:

- A. Base cabinets shall support a minimum of 500 lbs. per lineal foot suspended across cabinet ends.
- B. Drawers in a cabinet shall support a minimum of 100 lbs.
- C. Utility tables (with 4 legs) shall support a minimum of 300 lbs.
- D. Hanging wall cases shall support a minimum of 300 lbs.
- E. Shelves of base units, wall cases, and tall cases shall support a minimum of 100 lbs.

1.6 SHOP DRAWINGS

- A. Submit complete shop drawings showing all casework, elevations, plans, cross sections and installation details.
- B. When locks are specified a complete keying schedule will be submitted with proposed keying for review by Architect and Owner.





STAINLESS STEEL CASEWORK

TECHNICAL PRODUCT DATA

1.7 SAMPLES

Submit one typical wall and base unit for Architect and Owner review and acceptance. The sample, if approved, may be incorporated into the project.

1.8 DELIVERY, STORAGE AND HANDLING

- A. Schedule delivery of casework and equipment so that spaces are sufficiently complete to allow for installation immediately following delivery.
- B. Protect finished surfaces from soiling or damage during handling and installation. Cover working surfaces with cardboard. Mark in large lettering "NO STANDING."

Part 2 – Products

2.1 DESIGN REQUIREMENTS

- A. Modular cabinetry shall be of modern slim line styling with 1" wide vertical stiles and horizontal intermediate rails.
- B. Individual cabinets are to be rigid and self-supporting, modular in nature, for use interchangeably in a group of cabinets, or as a single unit.
- C. Top quality cabinetry to be ensured by the use of the proper machinery, tools, dies, and skilled workmanship in accordance with currently established standards of the laboratory furnishings industry. All cabinets and components are to be assembled utilizing jigs and fixtures as necessary to guarantee interchangeability of components between cabinets of like size.

2.2 CONSTRUCTION

- A. CABINET:
 - 1. Cabinet backs, end panels, uprights, and toe base fabrication from 18 gauge stainless steel.
 - 2. Top and intermediate horizontal rails and rear triangular gussets fabricated from 18 gauge stainless steel.
 - 3. "L" shaped front corner reinforcement gussets and hinge reinforcements fabricated from 14 gauge stainless steel.
 - 4. Bottom triangular leveler gussets fabricated from 11 gauge stainless steel.
 - 5. All cabinets shall have a cleanable smooth interior. Front and rear reinforcing members, and channel shaped uprights shall be enclosed full height.
 - 6. Front face joints fully welded, ground and polished to provide a continuous flat front plane free of crevices.
 - 7. Front face of doors, drawers, and panels shall align flush with cabinet front, and shall not overlap case ends or top and bottom rails.
 - 8. Cabinet openings for doors and drawers rabbetted to provide a dust resistant interior.
 - 9. Base cabinets furnished with removable back panel for access to stops, valves, and service lines. No back panel furnished on cabinets with drawers only. Sink base cabinets furnished with lowered back panels (2/3 height) to accommodate sink, drain and service fixtures.





STAINLESS STEEL CASEWORK

TECHNICAL PRODUCT DATA

10. Wall and tall storage cabinets furnished with fixed back panel.
11. Base cabinets, wall cabinets, and tall cabinets up to 48" in width double-hinged doors, furnished without vertical center post to allow full access to cabinet interior.
12. Concealed horizontal rails furnished beneath all drawers, with or without locks.
13. Vertical stiles shall be provided between all doors and drawers, or tiers of drawers of all sectional cabinets.
14. All floor-mounted cabinets supported on (4) adjustable leveling glides.
15. Bottom shelf of base cabinets recessed, with sides turned up to contain spills within cabinet.
16. Bottom of base cabinets shall be removable for cleanability and access to leveling glides. Open or plugged holes in bottom of cabinets for access to leveling glides are not acceptable.
17. Top of toe space below bottom cabinet closed and finished flush.
18. Front corners of cabinets reinforced with "L" shaped reinforcement gussets.
19. Front top rails on cabinets over 30" in width reinforced with additional stainless steel angle shape for greater strength and rigidity.

B. DOORS:

1. All doors shall close against rubber bumpers.
2. All hinged doors less than 36" in height shall be hung by a minimum of two (2) hinges. Doors greater than 36" in height shall be hung with a minimum of three (3) hinges.
3. Hinged and Sliding Solid Panel Doors:
 - a. 3/4" thick, double wall telescoping box construction, with sound deadened interior.
 - b. Exterior pan fabricated from 18 gauge stainless steel.
 - c. Interior pan fabricated from 20 gauge stainless steel.
 - d. Hinges attached with stainless steel screws to 14 gauge steel reinforcing plates in case and door.
4. Hinged and Sliding Framed Glass Doors:
 - a. 18 gauge stainless steel outer face to be of one piece construction, with corners fully welded, ground and polished.
 - b. 20 gauge stainless steel inner face removable for replacement of glazing.
 - c. Glazing set into full perimeter, continuous vinyl glazing channel.

C. DRAWERS:

1. Drawer fronts 3/4" thick, 20 gauge stainless steel telescoping box construction, sound deadening interior.
2. Bottoms and sides of drawer formed from single sheet of 20 gauge stainless steel, coved at bottom. Body spot welded to drawer front.
3. Drawer shall close against rubber bumpers.
4. Drawer suspension – Typical, 100 lb. capacity, zinc-plated heavy duty full-extension telescoping slides with polymer ball bearings. Full width drawers over 36" wide will have 200lb drawer glides.
5. All drawers over 24" in width furnished with (2) drawer pulls.





STAINLESS STEEL CASEWORK

TECHNICAL PRODUCT DATA

D. SHELVES:

1. Adjustable intermediate shelves fabricated from 20 gauge stainless steel, with front and rear edges formed down and back $\frac{3}{4}$ ". Ends formed down $\frac{3}{4}$ " for stiffness.
2. Shelves over 36" long reinforced with stainless steel hat channel stiffener running longitudinally along center of shelf.

E. KNEE SPACE RAILS AND DRAWER ASSEMBLIES:

1. Knee Space Rails: 4" high "C" shaped channel formed from 18 gauge stainless steel.
2. Drawers to be same as standard drawer unit previously specified, mounted in 4-1/2" high, 18 gauge stainless steel four (4) sided frame.
3. Knee space rails and drawer assemblies designed for mechanical attachment to adjacent cabinets without exposed fasteners.

F. CLOSURE PANELS, SCRIBES AND FILLERS:

1. Closure panels, scribes and fillers formed from 18 gauge stainless steel sheet, secured to cabinetry without exposed fasteners.

G. HARDWARE

1. Door Hinges – 2-1/2" long stainless steel five (5) knuckle institutional type butt hinges with rounded ends.
2. Door Catches – Zinc plated adjustable nylon roller catch.
3. Hinged Door and Drawer Pulls – Satin chrome plated wire pull, attached with screws on minimum 4" centers.
4. Drawer pulls shall be mounted horizontally and door pulls mounted vertically.
5. Solid and framed glass sliding doors furnished stainless steel pull.
6. Solid and framed glass sliding doors suspended by nylon-tired sheaves with steel bearings on extruded aluminum overhead track. Bottom of doors held in alignment by removable stainless steel shoe.
7. Shelf Clips: Die formed stainless steel.
8. Leveling Glides: 3/8" – 16 mild steel 250lb capacity glide with minimum 1" adjustment.
9. Label Holders: (where shown on drawings, or as scheduled) 1" x 2-1/2" satin chrome plated finish, installed with screws.
10. Locks: (where shown on drawings, or as scheduled) heavy-duty cylinder type 5-disc tumbler dull nickel plated, stamped with identifying number.

PART 3 – EXECUTION

3.1 INSTALLATION

A. Casework Installation:

1. Set casework components plumb, square and straight with no distortion and securely anchored.
2. Screw continuous cabinets together with joints flush, tight and uniform, and with alignment of adjacent units within 1/16" tolerance.
3. Secure wall cabinets to solid supporting backing material, not to plaster, lath or gypsum board.





STAINLESS STEEL CASEWORK

TECHNICAL PRODUCT DATA

3.2 ADJUSTING

- A. Repair or move and replace defective work, as directed by Owner's Representative upon completion of installation
- B. Adjust Doors, drawers, hardware and other moving or operating parts to function smoothly.

3.3 CLEANING

- A. Clean shop finished casework, touch up as required, wipe down and broom clean interior and exterior of equipment.

3.4 PROTECTION OF FINISHED WORK

- A. Provide all necessary protective measures to prevent exposure of casework and equipment from exposure to other construction activity during installation.
- B. Advise contractor of procedures and precautions for protection of installed casework from damage by workers from other trades.





STAINLESS STEEL CASEWORK

METRIC CONVERSION TABLES

FOR PURPOSES OF THIS CATALOG, THE FOLOWING ARE NOMINAL ENGLISH TO METRIC CONVERSIONS:

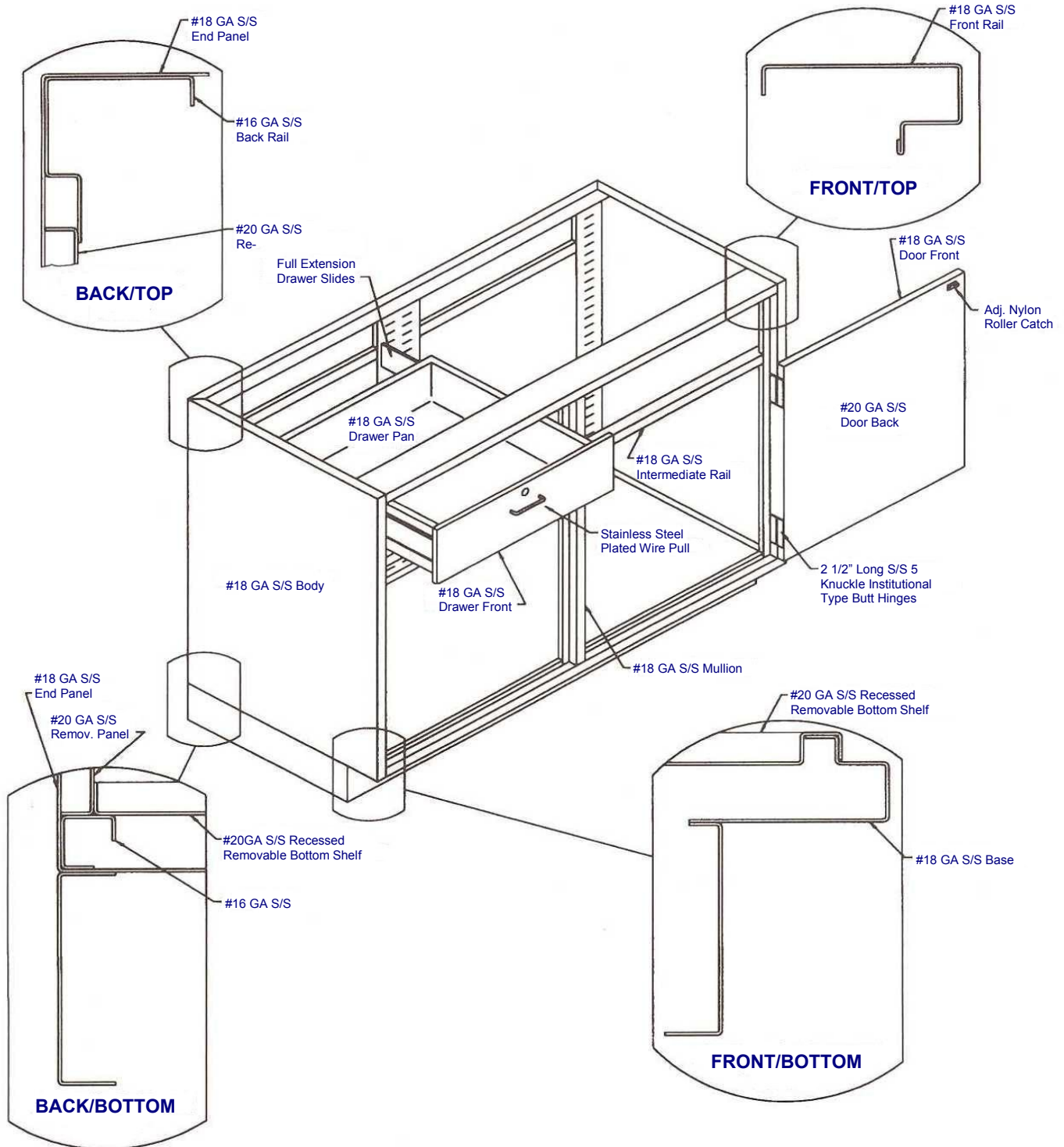
Dimensions:	
2 3/4"	70 mm
3 1/2"	89 mm
5 1/2"	140 mm
7"	178 mm
11"	279 mm
14"	356 mm
16"	406 mm
18"	457 mm
22"	559 mm
24"	610 mm
28 3/4"	730 mm
30"	762 mm
34 3/4"	883 mm
36"	914 mm
42"	1067 mm
48"	1219 mm
84"	2134 mm

Weights:	
100 lbs	45.4 kg
150 lbs	68.0 kg
300 lbs	136.1 kg
500 lbs	226.8 kg

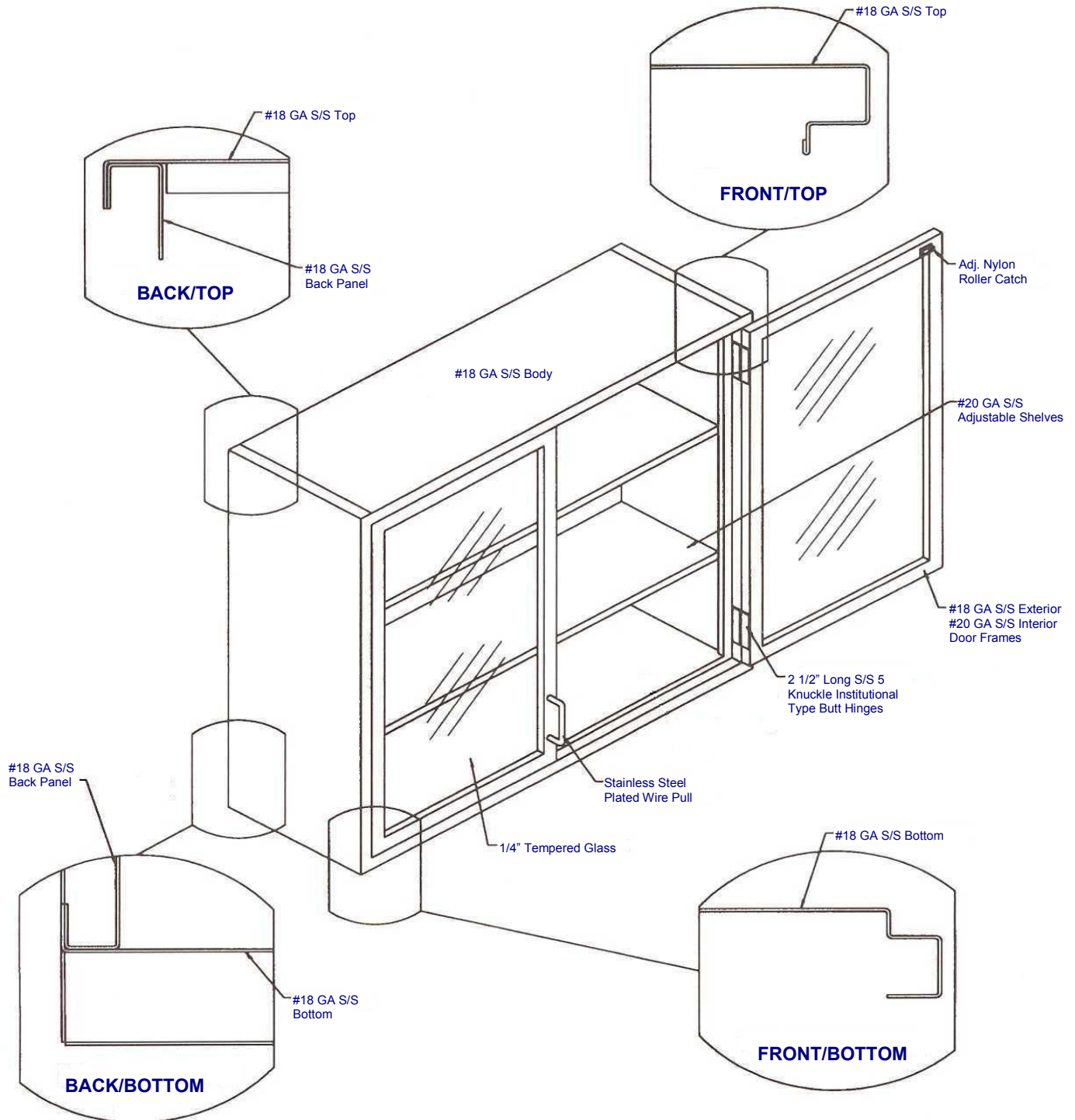
Gauge	Gauge Chart	
	MM	Inch
11	3.17	.120
14	1.98	.075
16	1.59	.060
18	1.27	.049
20	.953	.036
22	.794	.030



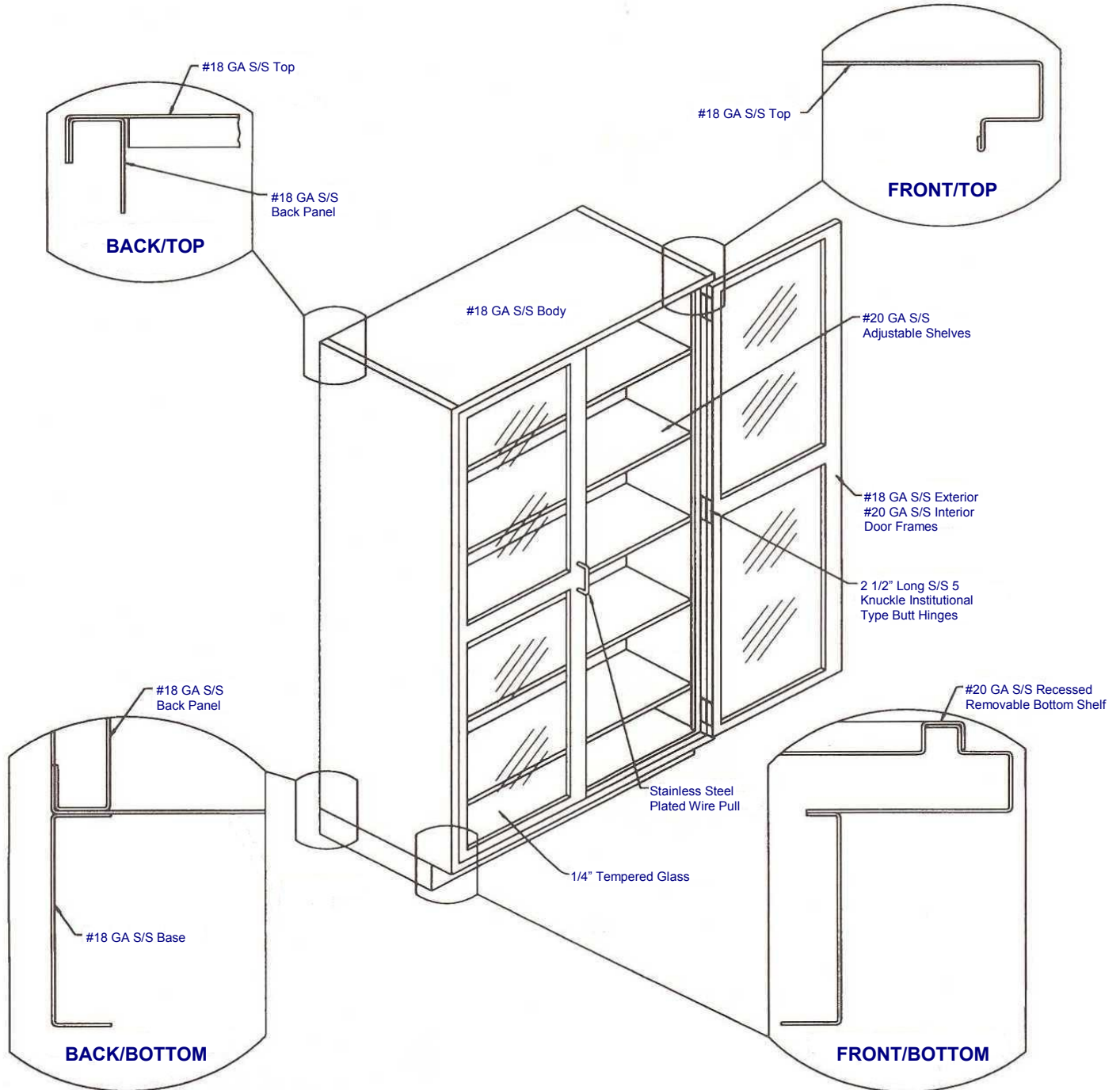
Typical Base Cabinet Construction



Typical Wall Cabinet Construction



Typical Tall Cabinet Construction



Common Features

- ADA height available
- Adjustable shelf
- Removable back/bottom
- Solid hinged door (units with doors)

Product Number	Overall Dimensions		
	W	D	H
SSB2918-000	18"	22 3/8"	28 3/4"
SSB3518-000	18"	22 3/8"	34 3/4"
SSB2924-000	24"	22 3/8"	28 3/4"
SSB3524-000	24"	22 3/8"	34 3/4"
SSB2930-000	30"	22 3/8"	28 3/4"
SSB3530-000	30"	22 3/8"	34 3/4"
SSB2936-000	36"	22 3/8"	28 3/4"
SSB3536-000	36"	22 3/8"	34 3/4"
SSB2942-000	42"	22 3/8"	28 3/4"
SSB3542-000	42"	22 3/8"	34 3/4"
SSB2948-000	48"	22 3/8"	28 3/4"
SSB3548-000	48"	22 3/8"	34 3/4"

Open Base Unit



Product Number	Overall Dimensions		
	W	D	H
SSB2918-100	18"	22 3/8"	28 3/4"
SSB3518-100	18"	22 3/8"	34 3/4"
SSB2924-100	24"	22 3/8"	28 3/4"
SSB3524-100	24"	22 3/8"	34 3/4"

• Add 'L' or 'R' to end of product number for door swing

Hinged Single Door Base Unit



Common Features

- ADA height available
- Adjustable shelf
- Removable back/bottom
- Solid hinged door (units with doors)
- Lock options available

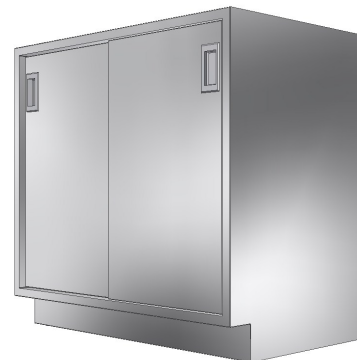
Product Number	Overall Dimensions		
	W	D	H
SSB2930-200	30"	22 3/8"	28 3/4"
SSB3530-200	30"	22 3/8"	34 3/4"
SSB2936200	36"	22 3/8"	28 3/4"
SSB3536-200	36"	22 3/8"	34 3/4"
SSB2942-200	42"	22 3/8"	28 3/4"
SSB3542-200	42"	22 3/8"	34 3/4"
SSB2948-200	48"	22 3/8"	28 3/4"
SSB3548-200	48"	22 3/8"	34 3/4"

Hinged Double Door Base Unit



Product Number	Overall Dimensions		
	W	D	H
SSB2930-2SS	30"	22 3/8"	28 3/4"
SSB3530-2SS	30"	22 3/8"	34 3/4"
SSB2936-2SS	36"	22 3/8"	28 3/4"
SSB3536-2SS	36"	22 3/8"	34 3/4"
SSB2942-2SS	42"	22 3/8"	28 3/4"
SSB3542-2SS	42"	22 3/8"	34 3/4"
SSB2948-2SS	48"	22 3/8"	28 3/4"
SSB3548-2SS	48"	22 3/8"	34 3/4"

Sliding Door Base Unit



Common Features

- ADA height available
- Adjustable shelf
- Removable back/bottom
- Solid hinged door (units with doors)
- Lock options available
- For actual drawer heights please see drawer dimension table

Hinged Single Door/Single Drawer Base Unit

Catalog Number	Overall Dimensions			Drawer Dimensions		
	W	D	H	No.	D	H
SSB2918-110	18"	22 3/8"	28 3/4"	1	5 1/2"	1/4"
SSB3518-110	18"	22 3/8"	34 3/4"	1	7"	1/4"
SSB2924-110	24"	22 3/8"	28 3/4"	1	5 1/2"	1/4"
SSB3524-100	24"	22 3/8"	34 3/4"	1	7"	1/4"

• Add 'L' or 'R' to end of product number for door swing



Hinged Single Door/Double Drawer Base Unit

Catalog Number	Overall Dimensions			Drawer Dimensions		
	W	D	H	No.	D	H
SSB2918-102	18"	22 3/8"	28 3/4"	2	2 3/4"	1/8"
SSB3518-102	18"	22 3/8"	34 3/4"	2	3 1/2"	1/8"
SSB2248-102	24"	22 3/8"	28 3/4"	2	2 3/4"	1/8"
SSB3524-102	24"	22 3/8"	34 3/4"	2	3 1/2"	1/8"

• Add 'L' or 'R' to end of product number for door swing



Common Features

- ADA height available
- Adjustable shelf
- Removable back/bottom
- Solid hinged door (units with doors)
- Lock options available
- For actual drawer heights please see drawer dimension table

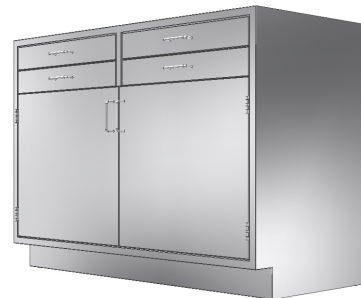
Hinged Double Door/Single Drawer Base Unit

Catalog Number	Overall Dimensions			Drawer Dimensions		
	W	D	H	No.	D	H
SSB2930-220	30"	22 3/8"	28 3/4"	2	5 1/2"	1/4"
SSB3530-220	30"	22 3/8"	34 3/4"	2	7"	1/4"
SSB2936-220	36"	22 3/8"	28 3/4"	2	5 1/2"	1/4"
SSB3536-220	36"	22 3/8"	34 3/4"	2	7"	1/4"
SSB2942-220	42"	22 3/8"	28 3/4"	2	5 1/2"	1/4"
SSB3542-220	42"	22 3/8"	34 3/4"	2	7"	1/4"
SSB2948-220	48"	22 3/8"	28 3/4"	2	5 1/2"	1/4"
SSB3548-220	48"	22 3/8"	34 3/4"	2	7"	1/4"



Hinged Double Door/Double Drawer Base Unit

Catalog Number	Overall Dimensions			Drawer Dimensions		
	W	D	H	No.	D	H
SSB2930-204	30"	22 3/8"	28 3/4"	4	2 3/4"	1/8"
SSB3530-204	30"	22 3/8"	34 3/4"	4	3 1/2"	1/8"
SSB2936-204	36"	22 3/8"	28 3/4"	4	2 3/4"	1/8"
SSB3536-204	36"	22 3/8"	34 3/4"	4	3 1/2"	1/8"
SSB2942-204	42"	22 3/8"	28 3/4"	4	2 3/4"	1/8"
SSB3542-204	42"	22 3/8"	34 3/4"	4	3 1/2"	1/8"
SSB2948-204	48"	22 3/8"	28 3/4"	4	2 3/4"	1/8"
SSB3548-204	48"	22 3/8"	34 3/4"	4	3 1/2"	1/8"



Common Features

- ADA height available
- Adjustable shelf
- Removable back/bottom
- Solid hinged door (units with doors)
- Lock options available
- For actual drawer heights please see drawer dimension table

Hinged Double Door/Single Drawer Base Unit



Catalog Number	Overall Dimensions			Drawer Dimensions		
	W	D	H	No.	D	H
SSB2930-210	30"	22 3/8"	28 3/4"	1	5 1/2"	1/4"
SSB3530-210	30"	22 3/8"	34 3/4"	1	7"	1/4"
SSB2936-210	36"	22 3/8"	28 3/4"	1	5 1/2"	1/4"
SSB3536-210	36"	22 3/8"	34 3/4"	1	7"	1/4"
SSB2942-210	42"	22 3/8"	28 3/4"	1	5 1/2"	1/4"
SSB3542-210	42"	22 3/8"	34 3/4"	1	7"	1/4"
SSB2948-210	48"	22 3/8"	28 3/4"	1	5 1/2"	1/4"
SSB3548-210	48"	22 3/8"	34 3/4"	1	7"	1/4"

Drawer Base Unit



Catalog Number	Overall Dimensions			Drawer Dimensions		
	W	D	H	No.	D	H
SSB2918-040	18"	22 3/8"	28 3/4"	4	5 1/2"	1/4"
SSB3518-040	18"	22 3/8"	34 3/4"	4	7"	1/4"
SSB2924-040	24"	22 3/8"	28 3/4"	4	5 1/2"	1/4"
SSB3524-040	24"	22 3/8"	34 3/4"	4	7"	1/4"
SSB2930-040	30"	22 3/8"	28 3/4"	4	5 1/2"	1/4"
SSB3530-040	30"	22 3/8"	34 3/4"	4	7"	1/4"
SSB2936-040	36"	22 3/8"	28 3/4"	4	5 1/2"	1/4"
SSB3536-040	36"	22 3/8"	34 3/4"	4	7"	1/4"
SSB2942-040	42"	22 3/8"	28 3/4"	4	5 1/2"	1/4"
SSB3542-040	42"	22 3/8"	34 3/4"	4	7"	1/4"
SSB2948-040	48"	22 3/8"	28 3/4"	4	5 1/2"	1/4"
SSB3548-040	48"	22 3/8"	34 3/4"	4	7"	1/4"

Common Features

- ADA height available
- Adjustable shelf
- Removable back/bottom
- Solid hinged door (units with doors)
- Lock options available
- For actual drawer heights please see drawer dimension table

Catalog Number	Overall Dimensions			Drawer Dimensions		
	W	D	H	No.	D	H
SSB2918-032	18"	22 3/8"	28 3/4"	5	*	*
SSB3518-032	18"	22 3/8"	34 3/4"	5	*	*
SSB2924-032	24"	22 3/8"	28 3/4"	5	*	*
SSB3524-032	24"	22 3/8"	34 3/4"	5	*	*
SSB2930-032	30"	22 3/8"	28 3/4"	5	*	*
SSB3530-032	30"	22 3/8"	34 3/4"	5	*	*
SSB2936-032	36"	22 3/8"	28 3/4"	5	*	*
SSB3536-032	36"	22 3/8"	34 3/4"	5	*	*
SSB2942-032	42"	22 3/8"	28 3/4"	5	*	*
SSB3542-032	42"	22 3/8"	34 3/4"	5	*	*
SSB2948-032	48"	22 3/8"	28 3/4"	5	*	*
SSB3548-032	48"	22 3/8"	34 3/4"	5	*	*

Drawer Base Unit



- * **For Units 28 3/4" High:** 2 Drawers - (D) 2 3/4", (H) 1/8. 4 Drawers - (D) 5 1/2", (H) 1/4.
- * **For Units 34 3/4" High:** 2 Drawers - (D) 3 1/2", (H) 1/8. 4 Drawers - (D) 7", (H) 1/4.

Catalog Number	Overall Dimensions			Drawer Dimensions		
	W	D	H	No.	D	H
SSB2930-140	30"	22 3/8"	28 3/4"	4	5 1/2"	1/4
SSB3530-140	30"	22 3/8"	34 3/4"	4	7"	1/4
SSB2936-140	36"	22 3/8"	28 3/4"	4	5 1/2"	1/4
SSB3536-140	36"	22 3/8"	34 3/4"	4	7"	1/4
SSB2942-140	42"	22 3/8"	28 3/4"	4	5 1/2"	1/4
SSB3542-140	42"	22 3/8"	34 3/4"	4	7"	1/4
SSB2948-140	48"	22 3/8"	28 3/4"	4	5 1/2"	1/4
SSB3548-140	48"	22 3/8"	34 3/4"	4	7"	1/4

• Add 'L' or 'R' to end of product number for door swing

Drawer/Door Base Unit



Common Features

- ADA height available
- Adjustable shelf
- Removable back/bottom
- Solid hinged door (units with doors)
- Lock options available
- For actual drawer heights please see drawer dimension table

Catalog Number	Overall Dimensions			Drawer Dimensions		
	W	D	H	No.	D	H
SSB2930-150	30"	22 3/8"	28 3/4"	5	5 1/2"	1/4
SSB3530-150	30"	22 3/8"	34 3/4"	5	7"	1/4
SSB2936-150	36"	22 3/8"	28 3/4"	5	5 1/2"	1/4
SSB3536-150	36"	22 3/8"	34 3/4"	5	7"	1/4
SSB2942-150	42"	22 3/8"	28 3/4"	5	5 1/2"	1/4
SSB3542-150	42"	22 3/8"	34 3/4"	5	7"	1/4
SSB2948-150	48"	22 3/8"	28 3/4"	5	5 1/2"	1/4
SSB3548-150	48"	22 3/8"	34 3/4"	5	7"	1/4

• Add 'L' or 'R' to end of product number for door swing

Drawer Base Unit



Catalog Number	Overall Dimensions			Drawer Dimensions		
	W	D	H	No.	D	H
SSB2930-134	30"	22 3/8"	28 3/4"	7	*	*
SSB3530-134	30"	22 3/8"	34 3/4"	7	*	*
SSB2936-134	36"	22 3/8"	28 3/4"	7	*	*
SSB3536-134	36"	22 3/8"	34 3/4"	7	*	*
SSB2942-134	42"	22 3/8"	28 3/4"	7	*	*
SSB3542-134	42"	22 3/8"	34 3/4"	7	*	*
SSB2948-134	48"	22 3/8"	28 3/4"	7	*	*
SSB3548-134	48"	22 3/8"	34 3/4"	7	*	*

• Add 'L' or 'R' to end of product number for door swing

Drawer/Door Base Unit



- * **For Units 28 3/4" High:** 4 Drawers - (D) 2 3/4", (H) 1/8. 3 Drawers - (D) 5 1/2", (H) 1/4
- * **For Units 34 3/4" High:** 4 Drawers - (D) 3 1/2", (H) 1/8. 3 Drawers - (D) 7", (H) 1/4.

Common Features

- ADA height available
- Adjustable shelf
- Removable back/bottom
- Solid hinged door (units with doors)
- Lock options available
- For actual drawer heights please see drawer dimension table

Catalog Number	Overall Dimensions			Drawer Dimensions		
	W	D	H	No.	D	H
SSB2930-050	30"	22 3/8"	28 3/4"	5	5 1/2"	1/4"
SSB3530-050	30"	22 3/8"	34 3/4"	5	7"	1/4"
SSB2936-050	36"	22 3/8"	28 3/4"	5	5 1/2"	1/4"
SSB3536-050	36"	22 3/8"	34 3/4"	5	7"	1/4"
SSB2942-050	42"	22 3/8"	28 3/4"	5	5 1/2"	1/4"
SSB3542-050	42"	22 3/8"	34 3/4"	5	7"	1/4"
SSB2948-050	48"	22 3/8"	28 3/4"	5	5 1/2"	1/4"
SSB3548-050	48"	22 3/8"	34 3/4"	5	7"	1/4"

Combo Drawer Base Unit



Catalog Number	Overall Dimensions			Drawer Dimensions		
	W	D	H	No.	D	H
SSB2930-060	30"	22 3/8"	28 3/4"	6	5 1/2"	1/4"
SSB3530-060	30"	22 3/8"	34 3/4"	6	7"	1/4"
SSB2936-060	36"	22 3/8"	28 3/4"	6	5 1/2"	1/4"
SSB3536-060	36"	22 3/8"	34 3/4"	6	7"	1/4"
SSB2942-060	42"	22 3/8"	28 3/4"	6	5 1/2"	1/4"
SSB3542-060	42"	22 3/8"	34 3/4"	6	7"	1/4"
SSB2948-060	48"	22 3/8"	28 3/4"	6	5 1/2"	1/4"
SSB3548-060	48"	22 3/8"	34 3/4"	6	7"	1/4"

Combo Drawer Base Unit



Common Features

- ADA height available
- Adjustable shelf
- Removable back/bottom
- Lock options available
- For actual drawer heights please see drawer dimension table

Catalog Number	Overall Dimensions			Drawer Dimensions		
	W	D	H	No.	D	H
SSB2930-060A	30"	22 3/8"	28 3/4"	7	5 1/2"	1/4"
SSB3530-060A	30"	22 3/8"	34 3/4"	7	7"	1/4"
SSB2936-060A	36"	22 3/8"	28 3/4"	7	5 1/2"	1/4"
SSB3536-060A	36"	22 3/8"	34 3/4"	7	7"	1/4"
SSB2942-060A	42"	22 3/8"	28 3/4"	7	5 1/2"	1/4"
SSB3542-060A	42"	22 3/8"	34 3/4"	7	7"	1/4"
SSB2948-060A	48"	22 3/8"	28 3/4"	7	5 1/2"	1/4"
SSB3548-060A	48"	22 3/8"	34 3/4"	7	7"	1/4"

Combo Drawer Base Unit



Catalog Number	Overall Dimensions			Drawer Dimensions		
	W	D	H	No.	D	H
SSB2930-080	30"	22 3/8"	28 3/4"	8	5 1/2"	1/4"
SSB3530-080	30"	22 3/8"	34 3/4"	8	7"	1/4"
SSB2936-080	36"	22 3/8"	28 3/4"	8	5 1/2"	1/4"
SSB3536-080	36"	22 3/8"	34 3/4"	8	7"	1/4"
SSB2942-080	42"	22 3/8"	28 3/4"	8	5 1/2"	1/4"
SSB3542-080	42"	22 3/8"	34 3/4"	8	7"	1/4"
SSB2948-080	48"	22 3/8"	28 3/4"	8	5 1/2"	1/4"
SSB3548-080	48"	22 3/8"	34 3/4"	8	7"	1/4"

Combo Drawer Base Unit



Common Features

- ADA height available
- Adjustable shelf
- Removable back/bottom
- Solid hinged door (units with doors)
- Lock options available
- For actual drawer heights please see drawer dimension table

Combo Drawer Base Unit



- **For Units 28 3/4" High:** 2 Drawers - (D) 2 3/4", (H) 1/8. 4 Drawers - (D) 5 1/2", (H) 1/4.
- **For Units 34 3/4" High:** 2 Drawers - (D) 3 1/2", (H) 1/8. 4 Drawers - (D) 7", (H) 1/4.

Corner Base Unit

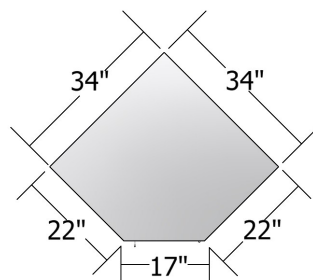


Catalog Number	Overall Dimensions			Drawer Dimensions		
	W	D	H	No.	D	H
SSB2930-064	30"	22 3/8"	28 3/4"	10	*	*
SSB3530-064	30"	22 3/8"	34 3/4"	10	*	*
SSB2936-064	36"	22 3/8"	28 3/4"	10	*	*
SSB3536-064	36"	22 3/8"	34 3/4"	10	*	*
SSB2942-064	42"	22 3/8"	28 3/4"	10	*	*
SSB3542-064	42"	22 3/8"	34 3/4"	10	*	*
SSB2948-064	48"	22 3/8"	28 3/4"	10	*	*
SSB3548-064	48"	22 3/8"	34 3/4"	10	*	*

Catalog Number	Overall Dimensions		
	W	D	H
SSC2914-100	34"	22 3/8"	28 3/4"
SSC3514-100	34"	22 3/8"	34 3/4"

• Add 'L' or 'R' to end of product number for door swing

Top View



Common Features

- ADA height available
- Adjustable shelf
- Removable back/bottom
- Solid hinged door (units with doors)
- Lock options available

Product Number	Overall Dimensions		
	W	D	H
SSB2918-10S	18"	22 3/8"	28 3/4"
SSB3518-10S	48"	22 3/8"	34 3/4"
SSB2924-10S	24"	22 3/8"	28 3/4"
SSB2352410S	24"	22 3/8"	34 3/4"

- Add 'L' or 'R' to end of product number for door swing
- Back cut-out for large sinks

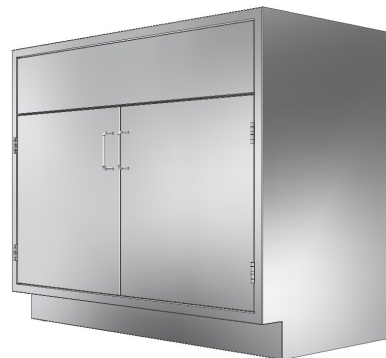
Sink Single Door Base Unit



Product Number	Overall Dimensions		
	W	D	H
SSB2930-20S	30"	22 3/8"	28 3/4"
SSB3530-20S	30"	22 3/8"	34 3/4"
SSB2936-20S	36"	22 3/8"	28 3/4"
SSB3536-20S	36"	22 3/8"	34 3/4"
SSB2942-20S	42"	22 3/8"	28 3/4"
SSB3542-20S	42"	22 3/8"	34 3/4"
SSB2948-20S	48"	22 3/8"	28 3/4"
SSB3548-20S	48"	22 3/8"	34 3/4"

- Back cut-out for large sinks

Sink Double Door Base Unit



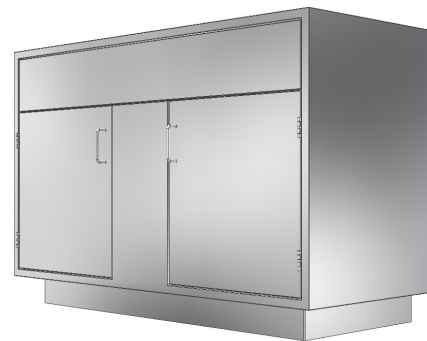
Common Features

- ADA height available
- Adjustable shelf
- Removable back/bottom
- Solid hinged door (units with doors)
- Lock options available

Product Number	Overall Dimensions		
	W	D	H
SSB2952-20SI	52"	22 3/8"	28 3/4"
SSB3552-20SI	52"	22 3/8"	34 3/4"
SSB2958-20SI	58"	22 3/8"	28 3/4"
SSB3558-20SI	58"	22 3/8"	34 3/4"

- Flush front panel above
- Back cut-out for large sinks

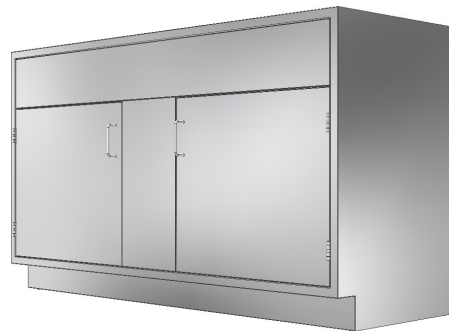
Sink Base Unit



Sink Double Door Base Unit

Product Number	Overall Dimensions		
	W	D	H
SSB2958-20S	58"	22 3/8"	28 3/4"
SSB3558-20S	58"	22 3/8"	34 3/4"

- Flush front panel above
- Back cut-out for large sinks



Open Front Wall Unit



Common Features

- Available in 13" or 16" depth
16" Deep cabinets add -16 to part number
- Solid back
- Adjustable shelf on 1/2" increments, see below:
24" high cabinet = one shelf
30" high cabinet = two shelves
36" high cabinet = two shelves
42" high cabinet = two shelves
48" high cabinet = three shelves

24" High	Overall Dimensions		
Product Number	W	D	H
SSW2418-000	18"	13" or 16"	24"
SSW2424-000	24"	13" or 16"	24"
SSW2430-000	30"	13" or 16"	24"
SSW2436-000	36"	13" or 16"	24"
SSW2442-000	42"	13" or 16"	24"
SSW2448-000	48"	13" or 16"	24"

30" High	Overall Dimensions		
Product Number	W	D	H
SSW3018-000	18"	13" or 16"	30"
SSW3024-000	24"	13" or 16"	30"
SSW3030-000	30"	13" or 16"	30"
SSW3036-000	36"	13" or 16"	30"
SSW3042-000	42"	13" or 16"	30"
SSW3048-000	48"	13" or 16"	30"

36" High	Overall Dimensions		
Product Number	W	D	H
SSW3618-000	18"	13" or 16"	36"
SSW3624-000	24"	13" or 16"	36"
SSW3630-000	30"	13" or 16"	36"
SSW3636-000	36"	13" or 16"	36"
SSW3642-000	42"	13" or 16"	36"
SSW3648-000	48"	13" or 16"	36"

42" High	Overall Dimensions		
Product Number	W	D	H
SSW4218-000	18"	13" or 16"	42"
SSW4224-000	24"	13" or 16"	42"
SSW4230-000	30"	13" or 16"	42"
SSW4236-000	36"	13" or 16"	42"
SSW4242-000	42"	13" or 16"	42"
SSW4248-000	48"	13" or 16"	42"

48" High	Overall Dimensions		
Product Number	W	D	H
SSW4818-000	18"	13" or 16"	48"
SSW4824-000	24"	13" or 16"	48"
SSW4830-000	30"	13" or 16"	48"
SSW4836-000	36"	13" or 16"	48"
SSW4842-000	42"	13" or 16"	48"
SSW4848-000	48"	13" or 16"	48"

Solid Hinged Door Wall Unit

Common Features

- Solid back
- Available in 13" or 16" depth
 - 16" Deep cabinets add -16 to part number
- Lock options available
- Adjustable shelf on 1/2" increments, see below:
 - 24" high cabinet = one shelf
 - 30" high cabinet = two shelves
 - 36" high cabinet = two shelves
 - 42" high cabinet = two shelves
 - 48" high cabinet = three shelves
- Add 'L' or 'R' to end of product number for door swing



24" High	Overall Dimensions		
Product Number	W	D	H
SSW2418-1SH	18"	13" or 16"	24"
SSW2424-1SH	24"	13" or 16"	24"

30" High	Overall Dimensions		
Product Number	W	D	H
SSW3018-1SH	18"	13" or 16"	30"
SSW3024-1SH	24"	13" or 16"	30"

36" High	Overall Dimensions		
Product Number	W	D	H
SSW3618-1SH	18"	13" or 16"	36"
SSW3624-1SH	24"	13" or 16"	36"

42" High	Overall Dimensions		
Product Number	W	D	H
SSW4218-1SH	18"	13" or 16"	42"
SSW4224-1SH	24"	13" or 16"	42"

48" High	Overall Dimensions		
Product Number	W	D	H
SSW4818-1SH	18"	13" or 16"	48"
SSW4824-1SH	24"	13" or 16"	48"

Double Hinged Door Wall Unit

Common Features

- Solid back
- Available in 13" or 16" depth
 - 16" Deep cabinets add -16 to part number
- Lock options available
- Adjustable shelf on 1/2" increments, see below:
 - 24" high cabinet = one shelf
 - 30" high cabinet = two shelves
 - 36" high cabinet = two shelves
 - 42" high cabinet = two shelves
 - 48" high cabinet = three shelves



24" High	Overall Dimensions		
Product Number	W	D	H
SSW2430-2SH	30"	13" or 16"	24"
SSW2436-2SH	36"	13" or 16"	24"
SSW2442-2SH	42"	13" or 16"	24"
SSW2448-2SH	48"	13" or 16"	24"

30" High	Overall Dimensions		
Product Number	W	D	H
SSW3030-2SH	30"	13" or 16"	30"
SSW3036-2SH	36"	13" or 16"	30"
SSW3042-2SH	42"	13" or 16"	30"
SSW3048-2SH	48"	13" or 16"	30"

36" High	Overall Dimensions		
Product Number	W	D	H
SSW3630-2SH	30"	13" or 16"	36"
SSW3636-2SH	36"	13" or 16"	36"
SSW2362-2SH	42"	13" or 16"	36"
SSW3648-2SH	48"	13" or 16"	36"

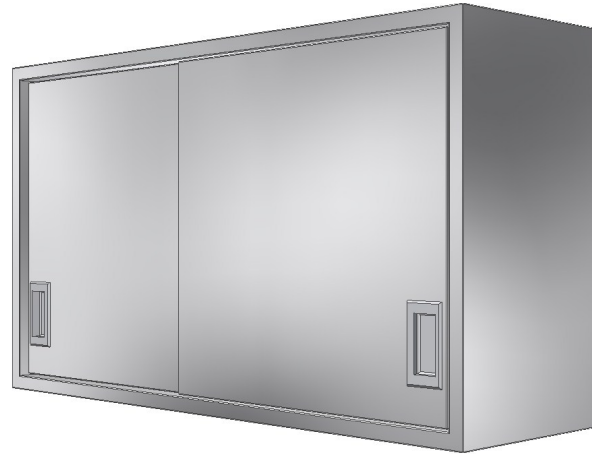
42" High	Overall Dimensions		
Product Number	W	D	H
SSW4230-2SH	30"	13" or 16"	42"
SSW4236-2SH	36"	13" or 16"	42"
SSW4242-2SH	42"	13" or 16"	42"
SSW4248-2SH	48"	13" or 16"	42"

48" High	Overall Dimensions		
Product Number	W	D	H
SSW4830-2SH	30"	13" or 16"	48"
SSW4836-2SH	36"	13" or 16"	48"
SSW4842-2SH	42"	13" or 16"	48"
SSW4848-2SH	48"	13" or 16"	48"

Sliding Door Wall Unit

Common Features

- Solid back
- Available in 13" or 16" depth
 - 16" Deep cabinets add -16 to part number
- Lock options available
- Adjustable shelf on 1/2" increments, see below:
 - 24" high cabinet = one shelf
 - 30" high cabinet = two shelves
 - 36" high cabinet = two shelves
 - 42" high cabinet = two shelves
 - 48" high cabinet = three shelves



24" High	Overall Dimensions		
Product Number	W	D	H
SSW2430-2SS	30"	13" or 16"	24"
SSW2436-2SS	36"	13" or 16"	24"
SSW2442-2SS	42"	13" or 16"	24"
SSW2448-2SS	48"	13" or 16"	24"

30" High	Overall Dimensions		
Product Number	W	D	H
SSW3030-2SS	30"	13" or 16"	30"
SSW3036-2SS	36"	13" or 16"	30"
SSW3042-2SS	42"	13" or 16"	30"
SSW3048-2SS	48"	13" or 16"	30"

36" High	Overall Dimensions		
Product Number	W	D	H
SSW3630-2SS	30"	13" or 16"	36"
SSW3636-2SS	36"	13" or 16"	36"
SSW2362-2SS	42"	13" or 16"	36"
SSW3648-2SS	48"	13" or 16"	36"

42" High	Overall Dimensions		
Product Number	W	D	H
SSW4230-2SS	30"	13" or 16"	42"
SSW4236-2SS	36"	13" or 16"	42"
SSW4242-2SS	42"	13" or 16"	42"
SSW4248-2SS	48"	13" or 16"	42"

48" High	Overall Dimensions		
Product Number	W	D	H
SSW4830-2SS	30"	13" or 16"	48"
SSW4836-2SS	36"	13" or 16"	48"
SSW4842-2SS	42"	13" or 16"	48"
SSW4848-2SS	48"	13" or 16"	48"

Framed Glass Hinged Door Wall Unit

Common Features

- Solid back
- Available in 13" or 16" depth
16" Deep cabinets add -16 to part number
- Lock options available
- Adjustable shelf on 1/2" increments, see below:
24" high cabinet = one shelf
30" high cabinet = two shelves
36" high cabinet = two shelves
42" high cabinet = two shelves
48" high cabinet = three shelves
- Add 'L' or 'R' to end of product number for door swing



24" High	Overall Dimensions		
Product Number	W	D	H
SSW2418-1GH	18"	13" or 16"	24"
SSW2424-1SH	24"	13" or 16"	24"

30" High	Overall Dimensions		
Product Number	W	D	H
SSW3018-1GH	18"	13" or 16"	30"
SSW3024-1SH	24"	13" or 16"	30"

36" High	Overall Dimensions		
Product Number	W	D	H
SSW3618-1GH	18"	13" or 16"	36"
SSW3624-1GH	24"	13" or 16"	36"

42" High	Overall Dimensions		
Product Number	W	D	H
SSW4218-1GH	18"	13" or 16"	42"
SSW4224-1GH	24"	13" or 16"	42"

48" High	Overall Dimensions		
Product Number	W	D	H
SSW4818-1GH	18"	13" or 16"	48"
SSW4824-1GH	24"	13" or 16"	48"

Framed Glass Hinged Double Door Wall Unit

Common Features

- Solid back
- Available in 13" or 16" depth
16" Deep cabinets add -16 to part number
- Lock options available
- Adjustable shelf on 1/2" increments, see below:
24" high cabinet = one shelf
30" high cabinet = two shelves
36" high cabinet = two shelves
42" high cabinet = two shelves
48" high cabinet = three shelves



24" High	Overall Dimensions		
Product Number	W	D	H
SSW2430-2GH	30"	13" or 16"	24"
SSW2436-2GH	36"	13" or 16"	24"
SSW2442-2GH	42"	13" or 16"	24"
SSW2448-2GH	48"	13" or 16"	24"

30" High	Overall Dimensions		
Product Number	W	D	H
SSW3030-2GH	30"	13" or 16"	30"
SSW3036-2GH	36"	13" or 16"	30"
SSW3042-2GH	42"	13" or 16"	30"
SSW3048-2GH	48"	13" or 16"	30"

36" High	Overall Dimensions		
Product Number	W	D	H
SSW3630-2GH	30"	13" or 16"	36"
SSW3636-2GH	36"	13" or 16"	36"
SSW2362-2GH	42"	13" or 16"	36"
SSW3648-2GH	48"	13" or 16"	36"

42" High	Overall Dimensions		
Product Number	W	D	H
SSW4230-2GH	30"	13" or 16"	42"
SSW4236-2GH	36"	13" or 16"	42"
SSW4242-2GH	42"	13" or 16"	42"
SSW4248-2GH	48"	13" or 16"	42"

48" High	Overall Dimensions		
Product Number	W	D	H
SSW4830-2GH	30"	13" or 16"	48"
SSW4836-2GH	36"	13" or 16"	48"
SSW4842-2GH	42"	13" or 16"	48"
SSW4848-2GH	48"	13" or 16"	48"

Framed Glass Sliding Door Wall Unit

Common Features

- Solid back
- Available in 13" or 16" depth
16" Deep cabinets add -16 to part number
- Lock options available
- Adjustable shelf on 1/2" increments, see below:
24" high cabinet = one shelf
30" high cabinet = two shelves
36" high cabinet = two shelves
42" high cabinet = two shelves
48" high cabinet = three shelves



24" High	Overall Dimensions		
Product Number	W	D	H
SSW2430-2GS	30"	13" or 16"	24"
SSW2436-2GS	36"	13" or 16"	24"
SSW2442-2GS	42"	13" or 16"	24"
SSW2448-2GS	48"	13" or 16"	24"

30" High	Overall Dimensions		
Product Number	W	D	H
SSW3030-2GS	30"	13" or 16"	30"
SSW3036-2GS	36"	13" or 16"	30"
SSW3042-2GS	42"	13" or 16"	30"
SSW3048-2GS	48"	13" or 16"	30"

36" High	Overall Dimensions		
Product Number	W	D	H
SSW3630-2GS	30"	13" or 16"	36"
SSW3636-2GS	36"	13" or 16"	36"
SSW2362-2GS	42"	13" or 16"	36"
SSW3648-2GS	48"	13" or 16"	36"

42" High	Overall Dimensions		
Product Number	W	D	H
SSW4230-2GS	30"	13" or 16"	42"
SSW4236-2GS	36"	13" or 16"	42"
SSW4242-2GS	42"	13" or 16"	42"
SSW4248-2GS	48"	13" or 16"	42"

48" High	Overall Dimensions		
Product Number	W	D	H
SSW4830-2GS	30"	13" or 16"	48"
SSW4836-2GS	36"	13" or 16"	48"
SSW4842-2GS	42"	13" or 16"	48"
SSW4848-2GS	48"	13" or 16"	48"

Common Features

- Adjustable shelves (five, unless specified)
- Solid back
- Solid hinged door (units with doors)
- Lock options available
- Available in 16" or 22 3/8" depth
- 22 3/8" Deep cabinets add -22 to part number

Product Number	Overall Dimensions		
	W	D	H
SSF8418-000	18"	16" or 22 3/8"	84"
SSF8424-000	24"	16" or 22 3/8"	84"
SSF8430-000	30"	16" or 22 3/8"	84"
SSF8436-000	36"	16" or 22 3/8"	84"
SSF8442-000	42"	16" or 22 3/8"	84"
SSF8448-000	48"	16" or 22 3/8"	84"

Open Front Tall Unit



Product Number	Overall Dimensions		
	W	D	H
SSF8418-1SH	18"	16" or 22 3/8"	84"
SSF8424-1SH	18"	16" or 22 3/8"	84"

• Add 'L' or 'R' to end of product number for door swing

Hinged Door Tall Unit



Common Features

- Adjustable shelves (five, unless specified)
- Solid back
- Solid hinged door (units with doors)
- Lock options available
- Available in 16" or 22 3/8" depth
- 22 3/8" Deep cabinets add -22 to part number

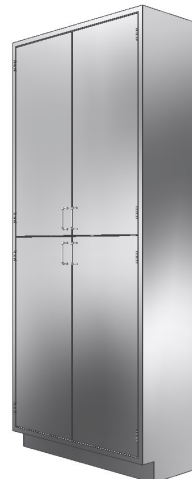
Product Number	Overall Dimensions		
	W	D	H
SSF8430-2SH	30"	16" or 22 3/8"	84"
SSF8436-2SH	36"	16" or 22 3/8"	84"
SSF8442-2SH	42"	16" or 22 3/8"	84"
SSF8448-2SH	48"	16" or 22 3/8"	84"

Hinged Door Tall Unit



Product Number	Overall Dimensions		
	W	D	H
SSF8430-4SH	30"	16" or 22 3/8"	84"
SSF8436-4SH	36"	16" or 22 3/8"	84"
SSF8442-4SH	42"	16" or 22 3/8"	84"
SST8448-4SH	48"	16" or 22 3/8"	84"

Hinged Door Tall Unit



Common Features

- Adjustable shelves (five, unless specified)
- Solid back
- Solid hinged door (units with doors)
- Lock options available
- Available in 16" or 22 3/8" depth
- 22 3/8" Deep cabinets add -22 to part number

Product Number	Overall Dimensions		
	W	D	H
SSF8430-2SS	30"	16" or 22 3/8"	84"
SSF8436-2SS	36"	16" or 22 3/8"	84"
SSF8442-2SS	42"	16" or 22 3/8"	84"
SSF8448-2SS	48"	16" or 22 3/8"	84"

Solid Sliding Door Tall Unit



Product Number	Overall Dimensions		
	W	D	H
SSF8418-1GH	18"	16" or 22 3/8"	84"
SSF8424-1GH	18"	16" or 22 3/8"	84"

• Add 'L' or 'R' to end of product number for door swing

Framed Glass Hinged Door Tall Unit



Common Features

- Adjustable shelves (five, unless specified)
- Solid back
- Solid hinged door (units with doors)
- Lock options available
- Available in 16" or 22 3/8" depth
- 22 3/8" Deep cabinets add -22 to part number

Product Number	Overall Dimensions		
	W	D	H
SSF8430-2GH	30"	16" or 22 3/8"	84"
SSF8436-2GH	36"	16" or 22 3/8"	84"
SSF8442-2GH	42"	16" or 22 3/8"	84"
SSF8448-2GH	48"	16" or 22 3/8"	84"

Framed Glass Hinged Door Tall Unit



Framed Glass Hinged Door Tall Unit

Product Number	Overall Dimensions		
	W	D	H
SSF8430-4GH	30"	16" or 22 3/8"	84"
SSF8436-4GH	36"	16" or 22 3/8"	84"
SSF8442-4GH	42"	16" or 22 3/8"	84"
SSF8448-4GH	48"	16" or 22 3/8"	84"



Common Features

- Adjustable shelves (five, unless specified)
- Solid back
- Solid hinged door (units with doors)
- Lock options available
- Available in 16" or 22 3/8" depth
- 22 3/8" Deep cabinets add -22 to part number

Framed Glass Sliding Door Tall Unit

Product Number	Overall Dimensions		
	W	D	H
SSF8430-2GH	30"	16" or 22 3/8"	84"
SSF8436-2GH	36"	16" or 22 3/8"	84"
SSF8442-2GH	42"	16" or 22 3/8"	84"
SSF8448-2GH	48"	16" or 22 3/8"	84"

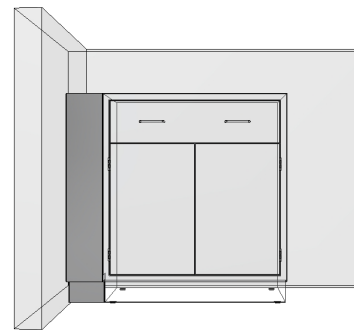


Common Features

- Specify required width (W) = 1", 2", 6" etc

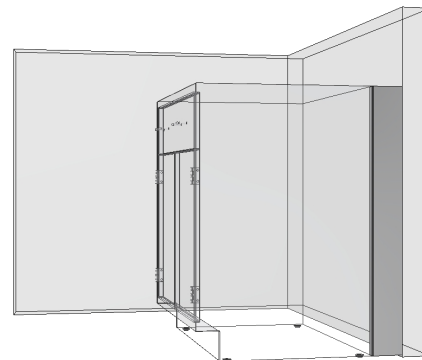
Product Number	Overall Dimensions	
	W	H
SSFFL29-W	(W)	28 3/4"
SSFFL35-W	(W)	34 3/4"
<ul style="list-style-type: none"> Scribe between base cabinet and abutting to wall 		

Base Cabinet Front Filler



Product Number	Overall Dimensions	
	W	H
SSLF29-W	(W)	28 3/4"
SSLF35-W	(W)	34 3/4"
<ul style="list-style-type: none"> Filler to close service chase at rear of base unit to wall or cabinet 		

Base Cabinet Rear Filler



Common Features

- Specify required width (W) = 1", 2", 6" etc

Base Cabinet Center Filler

Product Number	Overall Dimensions	
	W	H
SSCF29-W	(W)	28 3/4"
SSCF29-W	(W)	34 3/4"

- For back to back base units



Base Cabinet Corner Filler

Product Number	Overall Dimensions	
	W	H
ICF29-W	(W)	28 3/4"
ICF35-W	(W)	34 3/4"

- Corner filler for base cabinets joining at 90° angle

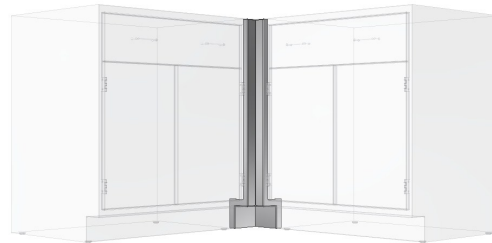


Common Features

- Specify required width (W) = 1", 2", 6" etc

Base Cabinet Corner Filler

Product Number	Overall Dimensions	
	W	H
BSF05(<u>W</u>)29	(W)	28 3/4"
BSF05(<u>W</u>)35	(W)	34 3/4"
<ul style="list-style-type: none"> • Corner filler for base cabinets joining at 90° angle 		



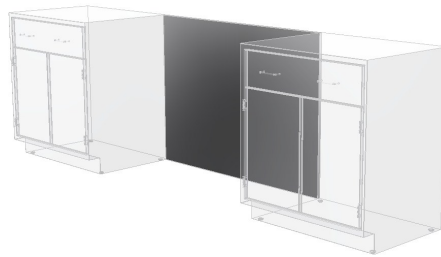
Common Features

- Specify width requirement

Product Number	Overall Dimensions	
	W	H
SSKSP2930	30"	28 3/4"
SSKSP3530	30"	34 3/4"
SSKSP2936	36"	28 3/4"
SSKSP3536	36"	34 3/4"
SSKSP2942	42"	28 3/4"
SSKSP3542	42"	34 3/4"
SSKSP2948	48"	28 3/4"
SSKSP3548	48"	34 3/4"

- Knee space panel to provide physical and visual barrier

Knee Space Panel



Product Number	Overall Dimensions	
	W	H
SSKSR0424	24"	4"
SSKSR0430	30"	4"
SSKSR0436	36"	4"
SSKSR0442	42"	4"
SSKSR0448	48"	4"

- Used to finish off front of knee space between cabinets when drawer unit is not used

Knee Space Rail

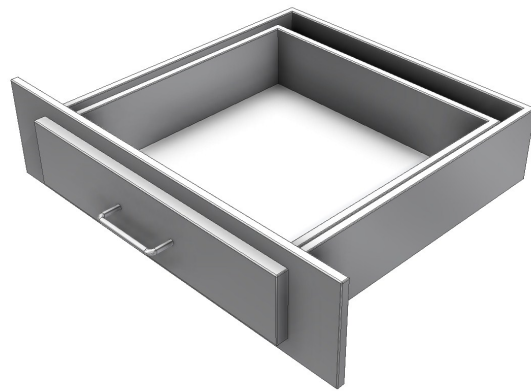


Common Features

- Specify width requirement

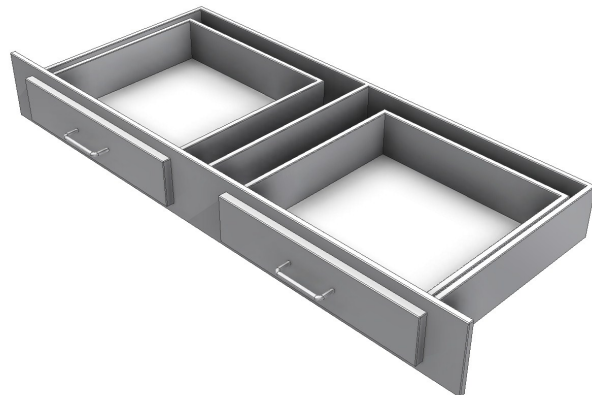
Product Number	Overall Dimensions	
	W	H
SSA043022-001	30"	4"
SSA043622-001	36"	4"
<ul style="list-style-type: none"> • Drawer unit to span between base units 		

Knee Space Drawer



Product Number	Overall Dimensions	
	W	H
SSA044222-002	42"	4"
SSA044822-002	48"	4"
<ul style="list-style-type: none"> • Drawer unit to span between base units 		

Knee Space Drawer



Common Features

- Specify width requirement

Countertop Finished End Panel

Product Number	Overall Dimensions	
	W	H
SSEP2902-22	22"	28 3/4"
SSEP3502-22	22"	34 3/4"
SSEP2902-29	29"	28 3/4"
SSEP3502-29	29"	34 3/4"

• 2" thick panel, finished both sides



Common Features

- Specify width requirement
- Specify required width (W) = 1", 2", 6" etc
- 16" Deep Fillers add -16 to part number

Product Number	Overall Dimensions		
	W	D	H
SSWCFF24-W	(W)	13"	24"
SSWCFF30-W	(W)	13"	30"
SSWCFF36-W	(W)	13"	36"
SSWCFF42-W	(W)	13"	42"
SSWCFF48-W	(W)	13"	48"

• Scribe between wall cabinet abutting to wall or cabinet

Wall Cabinet Scribe



Product Number	Overall Dimensions		
	W	D	H
SSWCCF24-W	(W)	13"	24"
SSWCCF30-W	(W)	13"	30"
SSWCCF36-W	(W)	13"	36"
SSWCCF42-W	(W)	13"	42"
SSWCCF48-W	(W)	13"	48"

• Scribe between wall cabinet abutting to wall or cabinet

Wall Cabinet Closure Panels



Common Features

- Specify width requirement
- Specify required width (W) = 1", 2", 6" etc
- 22 3/8" Deep Fillers add -22 to part number

Wall Cabinet Closure Panels

Product Number	Overall Dimensions		
	W	D	H
TSF02(W)1684	(W)	16"	84"
<ul style="list-style-type: none"> • For adjacent tall cabinets or wall 			



Tall Cabinet End Scribe

Product Number	Overall Dimensions		
	W	D	H
SSICF84-W	(W)	16"	84"
<ul style="list-style-type: none"> • Top panel to cover the opening at inside corners of tall cabinets 			



Common Features

- Recessed and pass through

Sloping Tops for Wall Mounted and Tall Storage Cabinets

Product Number	Overall Dimensions	
	W	D
SSST13-18	18"	13"
SSST16-18	18"	16"
SSST22-18	18"	22 3/8
SSST13-24	24"	13"
SSST16-24	24"	16"
SSST22-24	24"	22 3/8
SSST13-30	30"	13"
SSST16-30	30"	16"
SSST22-30	30"	22 3/8
SSST13-36	36"	13"
SSST16-36	36"	16"
SSST22-36	36"	22 3/8
SSST13-42	42"	13"
SSST16-42	42"	16"
SSST22-42	42"	22 3/8
SSST13-48	48"	13"
SSST16-48	48"	16"
SSST22-48	48"	22 3/8



